



CSP Series

Commercial OEM Self-Priming Pump

For commercial OEM and process water applications where high performance and self-priming characteristics are desired.

Rugged, self-priming CSP Series pumps feature an enclosed bronze impeller, standard 6" x 4" flange connections, plus a 1,100 cubic inch capacity flanged strainer to protect both pump and system. Ideal for open cooling towers and plant process-water applications.

Motors are standard JM type, NEMA® Rated "C" flange design with a stainless-steel shaft sleeve.

These cast iron pumps are available in 7-½, 10, 15 and 20 HP, and may be purchased with or without corrosion-preventing epoxy coating on all wetted surfaces. Pump and strainer sold separately.

Standard Features

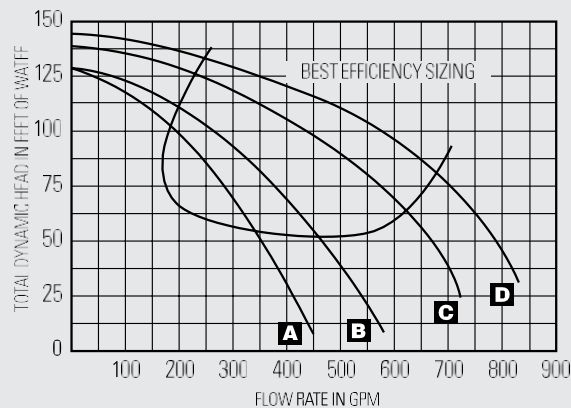
- Cast iron construction, enclosed bronze impeller and bronze wear rings for long lasting reliability.
- Exceptional self-priming design with strainer installed—allows pumps to be installed above or below water level.
- Oversized flanged basket strainer* with electro-polished stainless steel basket holds a large quantity of debris.
- Available in a wide range of performance levels from 7-½ to 20 HP to handle your varied pumping needs.
- NEMA rated motors offer high performance under continuous operation.
- Back pull-out design enables servicing of normal wearing parts without disconnecting piping.
- Dimensionally compatible to most installations for easier initial hook-ups or retrofits.
- Integral design base is slotted for ease of mounting.

**To insure priming and proper pump operation, install only with Sta-Rite Strainer. Order pump and strainer separately.*

CSP Series™

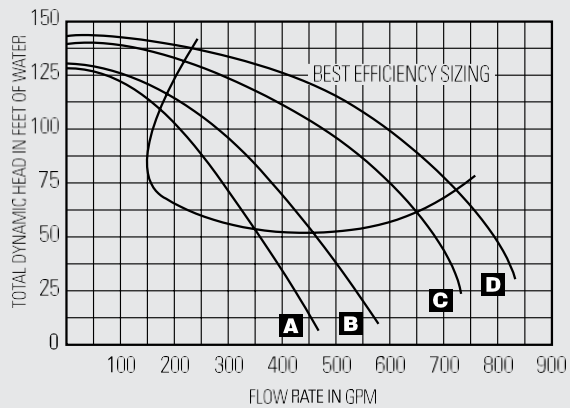
Commercial Self-Priming Pump

Performance Curves - CSP Pumps



A. CSPHK/CSPH B. CSPHL/CSPHL3 C. CSPHM3 D. CSPHN

Performance Curves - CCSP Pumps



A. CCSPHK/CCSPHK3 B. CCSPHL/CCSPHL3 C. CCSPHM3 D. CCSPHN

For detailed efficiency curves for each model, please contact the factory.

MATERIALS AND DESIGN

Pump Body

Volute type, back pull-out design

- **Port Size**

- 4" - ANSI® Certified 125 bolted flange discharge port.
- 6" - ANSI Certified 125 bolted flange suction port.

- **Material**

Volute & Motor Adapter.
Cast iron.

- **Impeller**

Bronze enclosed design with bronze wear ring.

- **Base**

Cast iron integral design, slotted for mounting ease.

- **Corrosion Prevention**

"CC" models have fusion bonded epoxy coating on all wetted cast iron surfaces for maximum hydraulic performance and corrosion prevention.

Hair and Lint Strainer

- **Material**

Separate bolt-on cast iron body and cover; stainless steel toggle bolts. Ductile iron wing nuts; perforated electro-polished stainless steel basket.

- **Size**

6" ANSI certified 125 bolted flange suction and discharge ports.

Pump Maximum Limits

- **Liquid Temperature:** 125° F
- **Ambient Air Temperature:** 104° F
- **pH Range:** 6.0-9.0

Motor

Standard "JM" type

- **Frame Size**

NEMA rated "C" flange. 230/460V are open drip-proof design. 200V are totally enclosed, fan cooled.

- **Shaft**

Stainless steel sleeved, and gasketed construction.

- **Design**

7-1/2 to 20 HP, 3500 RPM, JM open drip-proof, continuous duty, three phase and single phase (7-1/2 HP, 10 HP only).

- **Bearings**

Sealed ball type, permanently lubricated.

- **Thermal Overload Protection**

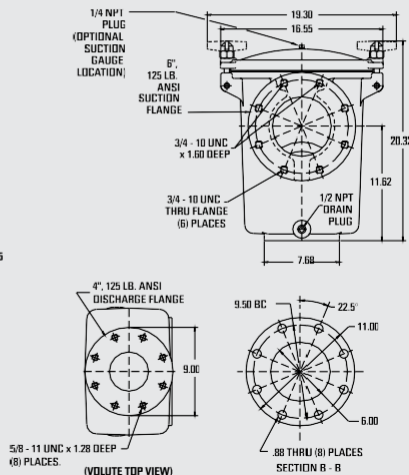
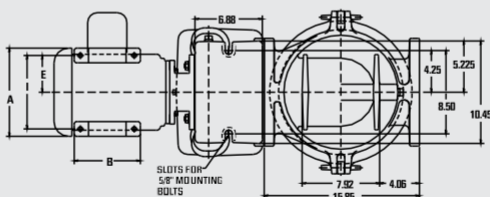
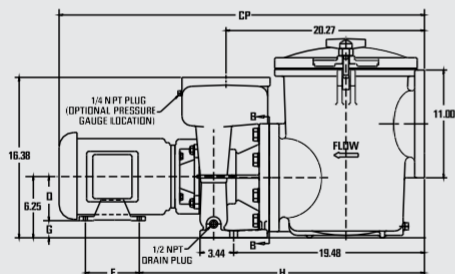
All models require external thermal overload protector.

Electrical

- **Power Supply Required**

Three-phase pumps are dual voltage. 7-1/2 and 10 HP single-phase models are available in 230V, 60 Hz only.

CSP Commercial Pump



Outline Dimensions

All dimensions shown in inches.

Catalog Number	A	B	CP	D	E	F	G	H	I
CSPHK, CCSPHK	10.62	7.00	39.44	5.25	4.25	5.50	1.00	30.00	8.50
CSPHK3, CCSPHK3, CSPH2K3	9.00	6.75	40.31	4.50	3.75	5.50	1.75	29.13	7.50
CSPHL, CCSPHL	10.35	8.26	42.69	5.25	4.25	7.00	1.00	30.00	8.50
CSPHL3, CCSPHL3	10.62	7.00	41.00	5.25	4.25	5.50	1.00	30.00	8.50
CSPHM3, CCSPHM3	10.62	8.50	42.50	5.25	4.25	7.00	1.00	30.00	8.50
CSPH2L3, CSPH2M3	10.62	8.50	42.50	5.25	4.25	7.00	1.00	30.00	8.50
CSPHN3, CCSPHN3	12.50	10.80	46.75	6.25	5.00	8.20	0.00	31.62	10.00
CSPH2N3, CCSPH2N3	13.38	12.44	48.50	6.25	5.00	10.00	0.00	31.65	10.00

Ordering Information

Catalog Number	Nominal HP (kw)	Phase	Motor Voltage	Full-Load* Amps	Approx. Ship. Weight lbs. (kg) (Pump Only)
CSPHK/CCSPHK	7-1/2 (5.6)	1	230	39	270 (122)
CSPHK3/CCSPHK3	7-1/2 (5.6)	3	230/460	21.7/18.0/9.8	265 (120)
CSPH2K3/CCSPH2K3	7-1/2 (5.6)	3	200	22.1	265 (120)
CSPHL/CCSPHL	10 (7.5)	1	230	46	275 (124)
CSPHL3/CCSPHL3	10 (7.5)	3	230/460	27.6/25/12.5	270 (122)
CSPH2L3/CCSPH2L3	10 (7.5)	3	200	28.1	270 (122)
CSPHM3/CCSPHM3	15 (11.2)	3	230/460	44.2/40/20	280 (127)
CSPH2M3/CCSPH2M3	15 (11.2)	3	200	42.3	280 (127)
CSPHN3/CCSPHN3	20 (15)	3	230/460	55.3/50/25	325 (148)
CSPH2N3/CCSPH2N3	20 (15)	3	200	57.3	350 (159)

*Amp draw may vary depending on motor manufacturer.

OPTIONS: CCSP Models feature special epoxy coated castings for maximum performance and corrosion resistance.

60 Hz T.E.F.C., 60 Hz premium efficiency, or 575 volt motors available, consult factory.

NOTE: Maximum ambient temperature for motor is 104° F (40° C). All pump motors require external overload protection (magnetic starter).

Pump strainer must be ordered separately (see below). Full load amps on motor model plate.



1620 HAWKINS AVE, SANFORD, NC 27330 800.831.7133 WWW.PENTAIRCOMMERCIAL.COM

All Pentair trademarks and logos are owned by Pentair, Inc. CSP Series™ and Sta-Rite® are registered trademarks and/or trademarks of Pentair Water Pool and Spa, Inc. and/or its affiliated co the United States and/or other countries. John Crane® is a registered trademark of John Crane, Inc. Because we are continuously improving our products and services, Pentair reserves the right specifications without prior notice. Pentair is an equal opportunity employer.

