

SANDPIPER®

FOOD, BEVERAGE & SANITARY PUMPS



Your One Stop Shop For FDA Compliant Pumps



200 East Big Beaver Road, Troy, MI 48083
P: (248) 752-2620 | E: Sales@oemsalesinc.com

MARKETS & APPLICATIONS

Applications: Product Transfer / Tank Over, Filling Lines, Blending and Mixing, and Ingredient Injection



DAIRY

- Yogurt
- Cottage Cheese
- Milk
- Butter
- Eggs
- Coffee Cream
- Ice Cream



PERSONAL CARE

- Hair Gel
- Shampoo
- Soap
- Perfumes
- Creams / Lotions
- Cosmetics
- Antiseptics
- Hair dye



FOOD & BEVERAGE

- Salsa
- Chili
- Soy Sauce
- Beer & Wine
- Juice Concentrates
- Corn Oils / Syrups
- Edible Oils
- Chocolate
- Salad Dressing
- Mayonnaise
- Condiments
- Tomato Sauce



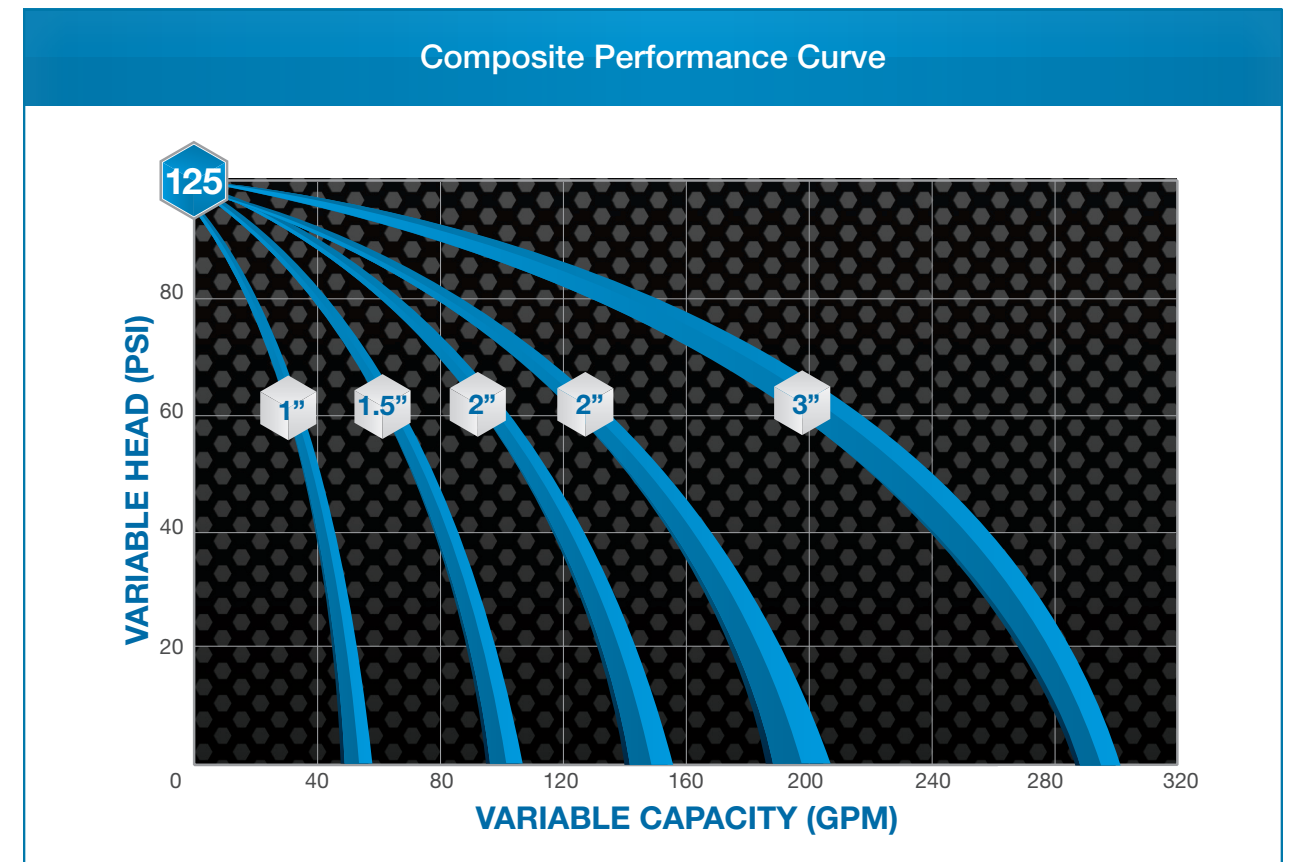
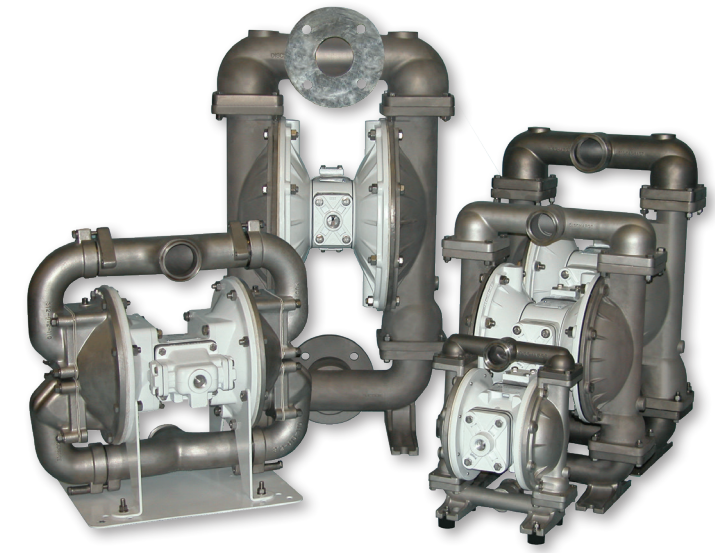
PHARMACEUTICAL

- Chemicals
- Deionized Water
- Alcohol
- Acids



T-Series FDA Compliant Pump Features

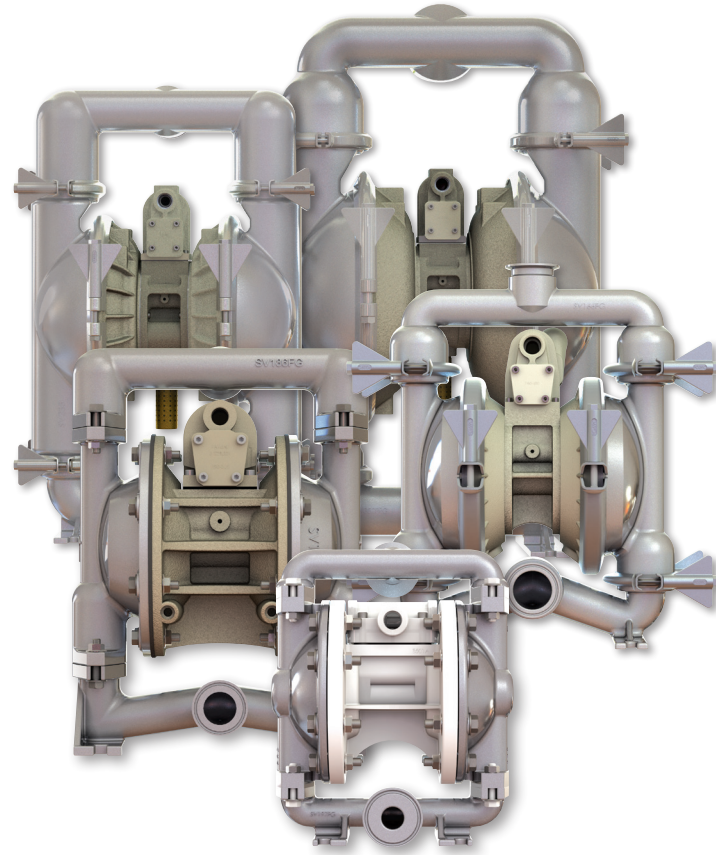
- Available in 1" - 3" sizes
- All Bolted Construction
- Stainless Steel Wetted
- White Epoxy Coated Aluminum Non-Wetted (Stainless Steel Available 1-1/2" - 3")
- Sanitary Clamp Connections
- PTFE, FDA Nitrile, FDA Santoprene Diaphragms



3A Certified Pumps Available Upon Request

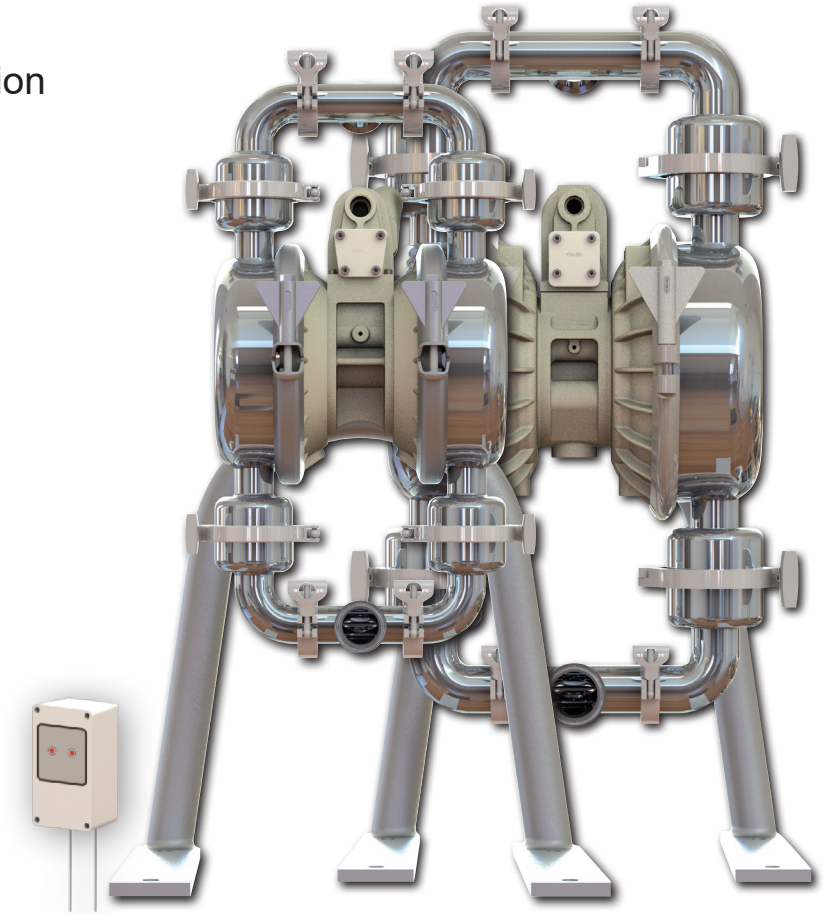
F-Series FDA Compliant Pump Features

- 1/2" - 1" All Bolted Construction
- 1-1/2" - 3" Clamped Construction
- Electropolished Stainless Steel Wetted
- Nickel Plated Aluminum Non-Wetted (Polypropylene & Stainless Steel Available Certain Models)
- PTFE, FDA Hytrel, FDA Santoprene Diaphragms
- Sanitary Clamp Connections

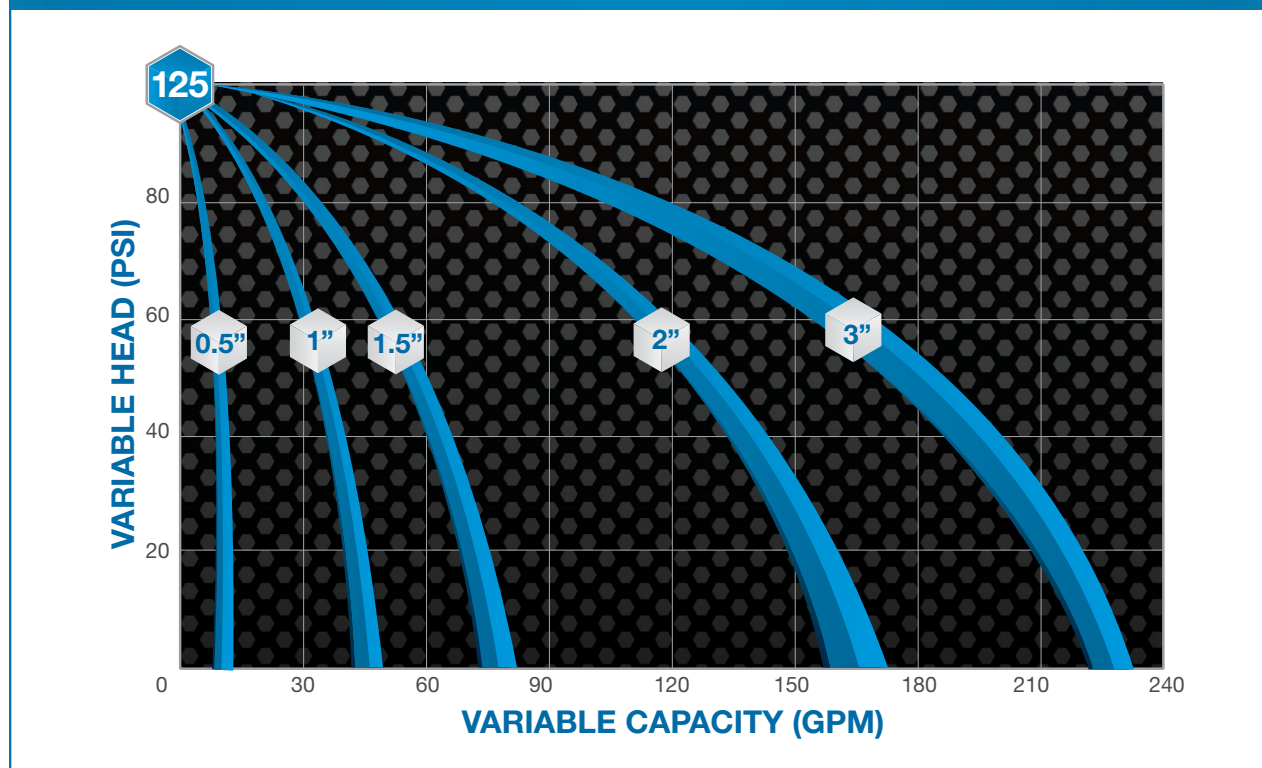


F-Series — Sanitary Pump Features

- 1-1/2" & 2" Clamped Construction
- Stainless Steel Wetted
- Polished Stainless Steel Construction
- Nickel Plated Non-Wetted (Stainless Steel Available)
- Sanitary Clamp Connections
- Clean-In-Place Rotating Stand
- Available with 3A Certification with addition of Leak Detector

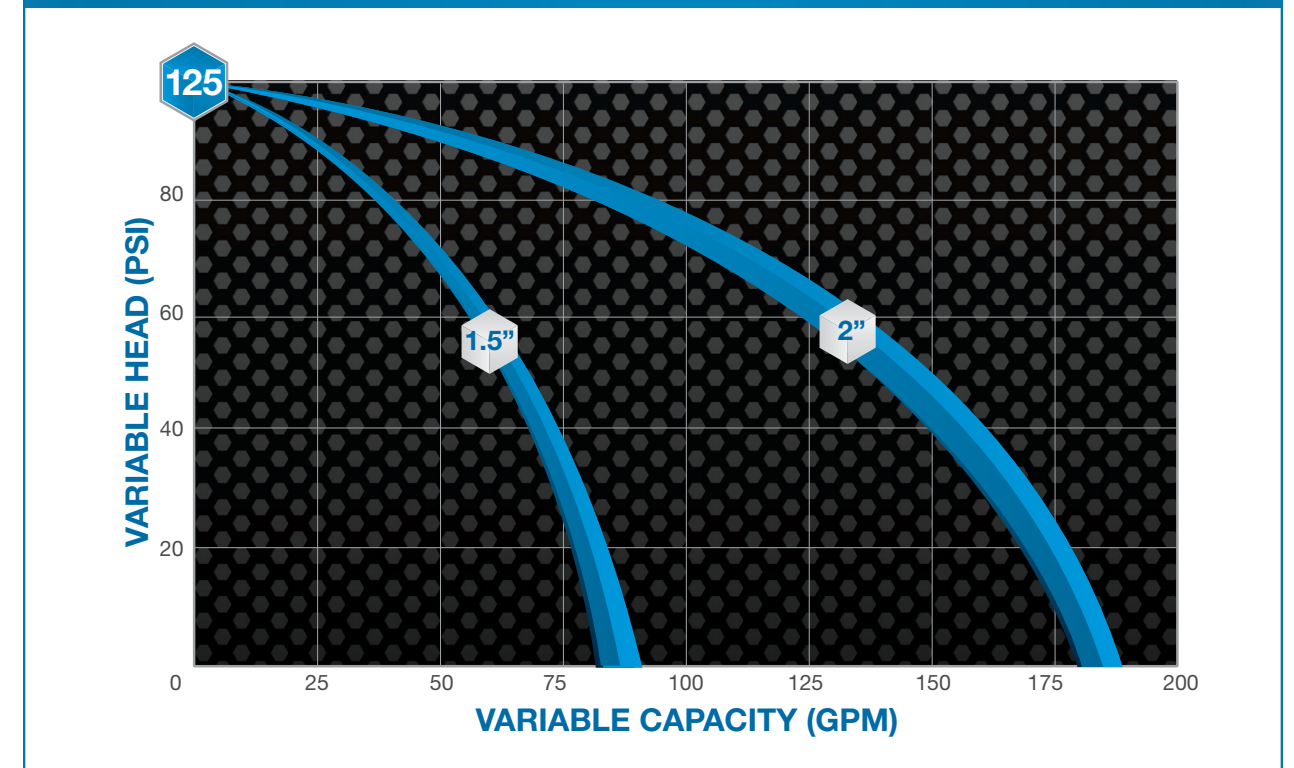


Composite Performance Curve



3A Certified Pumps Available Upon Request

Composite Performance Curve

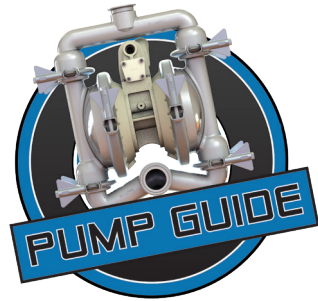


3A Certified Pumps Available Upon Request

SANITARY & FOOD PUMPS

Technical Specifications

Offering an extensive range of products engineered to perform in your most demanding applications



	FDA COMPLIANT					FDA COMPLIANT					SANITARY	
MODEL	F05	F10	T1F	F15	T15	F20	T20	TSA2	F30	T30	F15C	F20C
Port Size (Internal)	1/2" (12.7 mm)	1" (25.4 mm)	1" (25.4 mm)	1 1/2" (38 mm)	1 1/2" (38 mm)	2" (50.8 mm)	2" (50.8 mm)	2" (50.8 mm)	3" (76.2 mm)	3" (76.2 mm)	1 1/2" (38 mm)	2" (51 mm)
Maximum Flow Rate (GPM / LPM)	0-12 gpm (0-45.4 lpm)	0-49 gpm (0-185.5 lpm)	0-45 gpm (0-170 lpm)	0-71 gpm (0-268 lpm)	0-106 gpm (0-401 lpm)	0-185 gpm (0-700 lpm)	0-200 gpm (0-758 lpm)	0-208 gpm (0-787 lpm)	0-234 gpm (0-886 lpm)	0-285 gpm (0-1,079 lpm)	0-86 gpm (0-325 lpm)	0-179 gpm (0-677 lpm)
Check Valve Type	Ball	Ball	Ball	Ball	Ball	Ball	Ball	Flap	Ball	Ball	Ball	Ball
Pump Construction	Bolted	Bolted	Bolted	Clamped	Bolted	Clamped	Bolted	Bolted	Clamped	Bolted	Clamped	Clamped
Solids Handling -Up to-	1/16"	1/8"	1/4"	3/16"	1/4"	1/4"	1/4"	2"	3/8"	3/8"	3/8"	5/8"
Wetted Materials	316 Stainless Steel	316 Stainless Steel	316 Stainless Steel	316 Stainless Steel	316 Stainless Steel	316 Stainless Steel	316 Stainless Steel	316 Stainless Steel	316 Stainless Steel	316 Stainless Steel	316 Stainless Steel	316 Stainless Steel
Air Section Materials	Polypropylene Nickel Plated Aluminum	Nickel Plated Aluminum Polypropylene	Epoxy Coated Aluminum	Nickel Plated Aluminum	Epoxy Coated Aluminum Stainless Steel	Nickel Plated Aluminum Stainless Steel	Epoxy Coated Aluminum Stainless Steel	Epoxy Coated Aluminum	Nickel Plated Aluminum Stainless Steel	Epoxy Coated Aluminum Stainless Steel	Nickel Plated Aluminum	Nickel Plated Aluminum Stainless Steel
Surface Treatment	Electropolished Internally & Externally	Electropolished Internally & Externally	As Cast No Polish	Electropolished Internally & Externally	As Cast No Polish	Electropolished Internally & Externally	As Cast No Polish	As Cast No Polish	Electropolished Internally & Externally	As Cast No Polish	Polished Internally & Externally	Polished Internally & Externally
Wetted Casting Surface Finish, Ra	Ra 125 μ-in (3.175 μ-m)	Ra 125 μ-in (3.175 μ-m)	Ra 125 μ-in (3.175 μ-m)	Ra 125 μ-in (3.175 μ-m)	Ra 125 μ-in (3.175 μ-m)	Ra 125 μ-in (3.175 μ-m)	Ra 125 μ-in (3.175 μ-m)	Ra 125 μ-in (3.175 μ-m)	Ra 125 μ-in (3.175 μ-m)	Ra 125 μ-in (3.175 μ-m)	32 μ-in (Ra 0.8 μ-m)	32 μ-in (Ra 0.8 μ-m)
Diaphragm Material	PTFE One-Piece* Hytrel Santoprene®	PTFE One-Piece* Hytrel Santoprene®	PTFE w/ Backer PTFE One-Piece* Nitrile Santoprene®	PTFE w/ Backer Hytrel Santoprene®	PTFE w/ Backer PTFE One-Piece* Santoprene®	PTFE w/ Backer PTFE One-Piece* Hytrel Santoprene®	PTFE w/ Backer PTFE One-Piece* Nitrile Santoprene®	Nitrile	PTFE w/ Backer PTFE One-Piece* Hytrel Santoprene®	PTFE w/ Backer Nitrile Santoprene®	PTFE One-Piece* Hytrel	PTFE One-Piece* Hytrel Santoprene®
Connection Size / Type	1 1/2" Sanitary Clamp	1 1/2" Sanitary Clamp	1 1/2" Sanitary Clamp	2" Sanitary Clamp	2" Sanitary Clamp	2 1/2" Sanitary Clamp	2 1/2" Sanitary Clamp	2 1/2" Sanitary Clamp	3" Sanitary Clamp	3" Sanitary Clamp	1 1/2" Sanitary Clamp	2" Sanitary Clamp
Cleaning / Sanitizing Methods	Clean Out of Place (COP)	Clean Out of Place (COP)	Clean Out of Place (COP)	Clean Out of Place (COP)	Clean Out of Place (COP)	Clean Out of Place (COP)	Clean Out of Place (COP)	Clean Out of Place (COP)	Clean Out of Place (COP)	Clean Out of Place (COP)	Clean Out of Place (COP) Drainable	Clean Out of Place (COP) Drainable
Certifications	FDA COMPLIANT	FDA COMPLIANT	FDA COMPLIANT	FDA COMPLIANT	FDA COMPLIANT	FDA COMPLIANT	FDA COMPLIANT	FDA COMPLIANT	FDA COMPLIANT	FDA COMPLIANT	FDA COMPLIANT	FDA COMPLIANT

Note: See service manual for complete specifications.

Santoprene® is a registered trademark of Exxon Mobil Corp

*One Piece PTFE NOT EC 1935 Certified

BECAUSE ENSURING FOOD SAFETY IS PARAMOUNT

YOU CAN TRUST THE PERFORMANCE FACILITY TO SANDPIPER

✓ Pumps manufactured with FDA Compliant materials and certified to EC 1935/2004 for Food Contact Material



✓ The best solution to your pumping challenge. Our technical team has been solving the industry's most challenging pumping needs for over 50 years



✓ Delivering the pumps you need when you need them. We have the best lead times in the industry



WARREN RUPP, INC.

Declaration of Conformity

Manufacturer: Warren Rupp, Inc., 800 N. Main Street, Mansfield, Ohio, 44902 USA certifies that SANDPIPER® Air-Operated Double Diaphragm Food Processing Pump Models and Tranquillizer® Surge Suppressor Models comply with the European Community Regulations: (EC) No 1935/2004 for Food Contact Materials (EC) No 2023/2006 Good Manufacturing Practice (EU) No 10/2011 on plastic materials and articles intended to come in contact with food

Food Processing Pump Models:

T1FB1SASWTS600.	T15B1SSTST600.	T30B1SDSWTS600.	F10B1SZSNTF600.	F20B1SKSNTF600.
T1FB1S9SWTS600.	T20B1SASWTS600.	T30B1SASST600.	F10B1SDSNTF600.	F20B1SZSNTF600.
T1FB1SDSWTS600.	T20B1SDSWTS600.	T30B1SDSST600.	F15B1SKTNTF600.	F20B1SDDNTF600.
T1FB1SLWTS600.	T20B1SASST600.	SSB2, TD3SS.	F15B1SZSNTF600.	F20B1SHSNTC600.
T1FB1S9TWTS600.	T20B1SDSST600.	F05B1SGSPTF000.	F15B1SHHNTF600.	F20B1SKSNTC600.
T15B1SDSWTS600.	T20B1SASWTS600.	F05B1SZSPTF000.	F15B1SDDNTF600.	F20B1SZSNTC600.
T15B1SSSWTS600.	T20B1SDSWTS600.	F05B1SHSPTF000.	F15B1SKSNTC600.	F30B1SHHNTF600.
T15B1SDSST600.	T20B1SASST600.	F05B1SDSPTF000.	F15B1SZSNTC600.	F30B1SDDNTF600.
T15B1SSSST600.	T20B1SDSST600.	F10B1SHSNTF600.	F15B1SHSNTC600.	F30B1SKSNTF600.
T15B1SSTWTS600.	T30B1SASWTS600.	F10B1SKSNTF600.	F20B1SHHNTF600.	F30B1SZSNTF600.

Tranquillizer® Surge Suppressors:

TA1,NG1SS	TA2,NG2SS
TA25,NG1SS	TA50,NG2SS
TA1-1/2,NG1SS	TA3,NG2SS
TA40,NG1SS	TA80,NG2SS

- Materials used in equipment intended for food contact (Annex I (EC) No 1935/2004) :
 - Rubber • Metals & Alloys • Plastics
- Plastic Materials: PTFE and FKM/ PTFE coated
- The plastic components are suitable to come in contact with multiple food types, provided that storage contact time does not exceed 1/2 hour, contact temperature does not exceed 40°C and maximum operating temperatures within the instructions manual are not exceeded. Diaphragm failure may allow process fluids to come in contact with nonconforming materials. Regular inspections are recommended.
- This Declaration is based on :
 - Declaration of Conformities from raw material suppliers
 - Total Migration Analysis per (EU) No 10/2011
- Supporting document will be made available to competent authorities to demonstrate compliance

David Roseberry
Signature of authorized person

David Roseberry
Printed name of authorized person

February 8, 2013
Date of issue

Director of Engineering
Title

February 25, 2019
Date of revision

Distributed By:

Warren Rupp, Inc. | A Unit of IDEX Corporation
800 North Main Street, Mansfield, OH 44902 USA
Phone: 419.524.8388 | Fax: 419.522.7867
SANDPIPERPUMP.COM

©Copyright 2019 Warren Rupp, Inc. All Rights Reserved.

SP_HygenicBro-rev0519