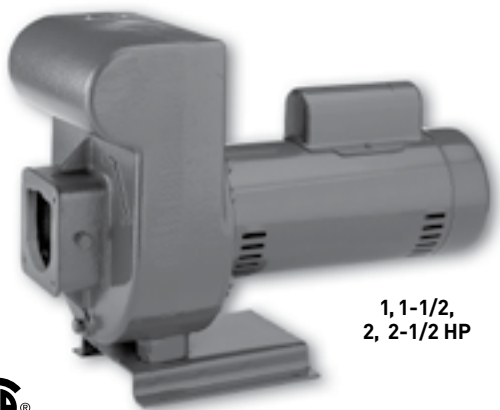


STA-RITE® D Series

Self-Priming Centrifugal Pumps



3 and 5 HP



1, 1-1/2,
2, 2-1/2 HP



Order suction flange with flapper check separately.

SPECIFICATIONS

Body and Base: Close-grained cast iron

Impeller: Noryl® on 1 through 2-1/2 HP, bronze on 3 and 5 HP

Diffuser: Cast iron

Shaft: 1 through 2-1/2 HP: 416 stainless steel; 3 and 5 HP: Carbon steel inside removable shaft sleeve of stainless steel.

Max Inlet Pressure: 20 PSI

Max Discharge Pressure: 100 PSI

Max Liquid Temperature: 60°C/140°F

Max Ambient Air Temperature: 40°C/104°F

FEATURES

1 through 5 HP: Both high head and medium head models offer heavy-duty motors, easy service design, and air volume control tapping.

Drain Port: Provided for easy winterizing.

Medium Head Models: Deliver up to 115' of head with capacities to 159 GPM.

High Head Models: Deliver up to 138' of head with capacities to 162 GPM.

Easy Serviceability: Normal wearing parts are easily accessible for service and replacement, without disturbing piping or mounting.

Some of the fastest priming pumps on the market. Available in high head or medium head series. Features mechanical seals, easy service design, heavy-duty motors, rugged construction. Available in 1 through 5 HP.

Optional 6" and 8" Trap Packages are available.

APPLICATIONS

Water Reclaim
Filtration
Water Conditioning
Sump Dewatering
Transfer

Noryl® is a registered trademark of General Electric Co.
All other brand or product names are trademarks or registered trademarks of Pentair Ltd.

STA-RITE® D Series

Self-Priming Centrifugal Pumps

ORDERING INFORMATION

HIGH HEAD

| Catalog Number | HP | Pipe Tapping Sizes | | | Motor Voltage | Phase | Approx. Wt. Lbs. |
|----------------|-------|--------------------|---------------|------------------|---------------|-------|------------------|
| | | Suction Flanges* | Top Discharge | Side Discharge** | | | |
| DHE | 1 | PKG 53 | 1-1/2" | 1-1/2" | 115/230 | 1 | 65 |
| DHE3 | 1 | PKG 53 | 1-1/2" | 1-1/2" | 208-230/460 | 3 | 65 |
| DHF | 1-1/2 | PKG 53 | 1-1/2" | 1-1/2" | 115/230 | 1 | 72 |
| DHF3 | 1-1/2 | PKG 53 | 1-1/2" | 1-1/2" | 208-230/460 | 3 | 72 |
| DHG | 2 | PKG 72 | 2" | - | 115/230 | 1 | 113 |
| DHG3 | 2 | PKG 72 | 2" | - | 208-230/460 | 3 | 113 |
| DHHG | 2-1/2 | PKG 72 | 2" | - | 115/230 | 1 | 120 |
| DHHG3 | 2-1/2 | PKG 72 | 2" | - | 208-230/460 | 3 | 120 |
| DH2H | 3 | PKG 53 | 2" | - | 200 | 1 | 144 |
| DHH | 3 | PKG 53 | 1-1/2" | - | 230 | 1 | 144 |
| DH2H3 | 3 | PKG 53 | 2" | - | 200 | 3 | 144 |
| DHH3 | 3 | PKG 53 | 1-1/2" | - | 208-230/460 | 3 | 144 |
| DH2J | 5 | PKG 72 | 2" | - | 200 | 1 | 184 |
| DHJ | 5 | PKG 72 | 2" | - | 230 | 1 | 184 |
| DH2J3 | 5 | PKG 72 | 2" | - | 200 | 3 | 184 |
| DHJ3 | 5 | PKG 72 | 2" | - | 208-230/460 | 3 | 184 |

MEDIUM HEAD

| | | | | | | | |
|-------|-------|--------|--------|--------|-------------|---|-----|
| DMG | 2 | PKG 53 | 1-1/2" | 1-1/2" | 115/230 | 1 | 86 |
| DMG3 | 2 | PKG 53 | 1-1/2" | 1-1/2" | 208-230/460 | 3 | 86 |
| DMMG | 2-1/2 | PKG 72 | 2" | 1-1/2" | 115/230 | 1 | 93 |
| DMMG3 | 2-1/2 | PKG 72 | 2" | 1-1/2" | 208-230/460 | 3 | 93 |
| DM2H | 3 | PKG 72 | 2-1/2" | - | 200 | 1 | 127 |
| DMH | 3 | PKG 72 | 2" | - | 230 | 1 | 137 |
| DM2H3 | 3 | PKG 72 | 2-1/2" | - | 200 | 3 | 137 |
| DMH3 | 3 | PKG 72 | 2" | - | 208-230/460 | 3 | 137 |
| DM2J | 5 | PKG 73 | 3" | - | 200 | 3 | 184 |
| DMJ | 5 | PKG 73 | 2-1/2" | - | 230 | 1 | 184 |
| DM2J3 | 5 | PKG 73 | 3" | - | 200 | 3 | 184 |
| DMJ3 | 5 | PKG 73 | 2-1/2" | - | 230/460 | 3 | 184 |

*Suction flanges must be ordered separately. See chart below.

**Pumps with Side discharge Tap of 1-1/2" are shipped with a 1-1/2" Square Head Pipe Plug in tap.

SUCTION FLANGES (Order separately – required for suction tap sizes)

| Package 52 - | Package 53 - | Package 72 - | Package 73 - |
|--------------|--------------|--------------|--------------|
| 1-1/2" | 2" | 2-1/2" | 3" |



PKG 52

1-1/2"

PKG 53

2" NPT



PKG 72

2-1/2"

PKG 73

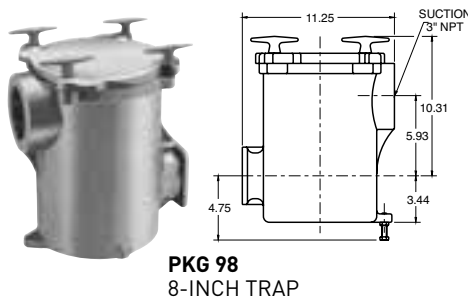
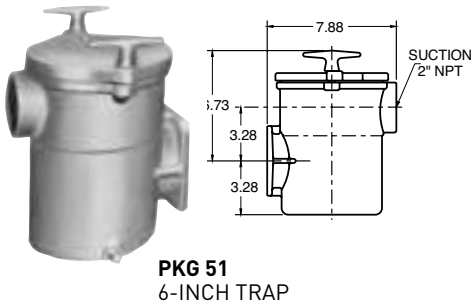
3" NPT

STA-RITE® D Series

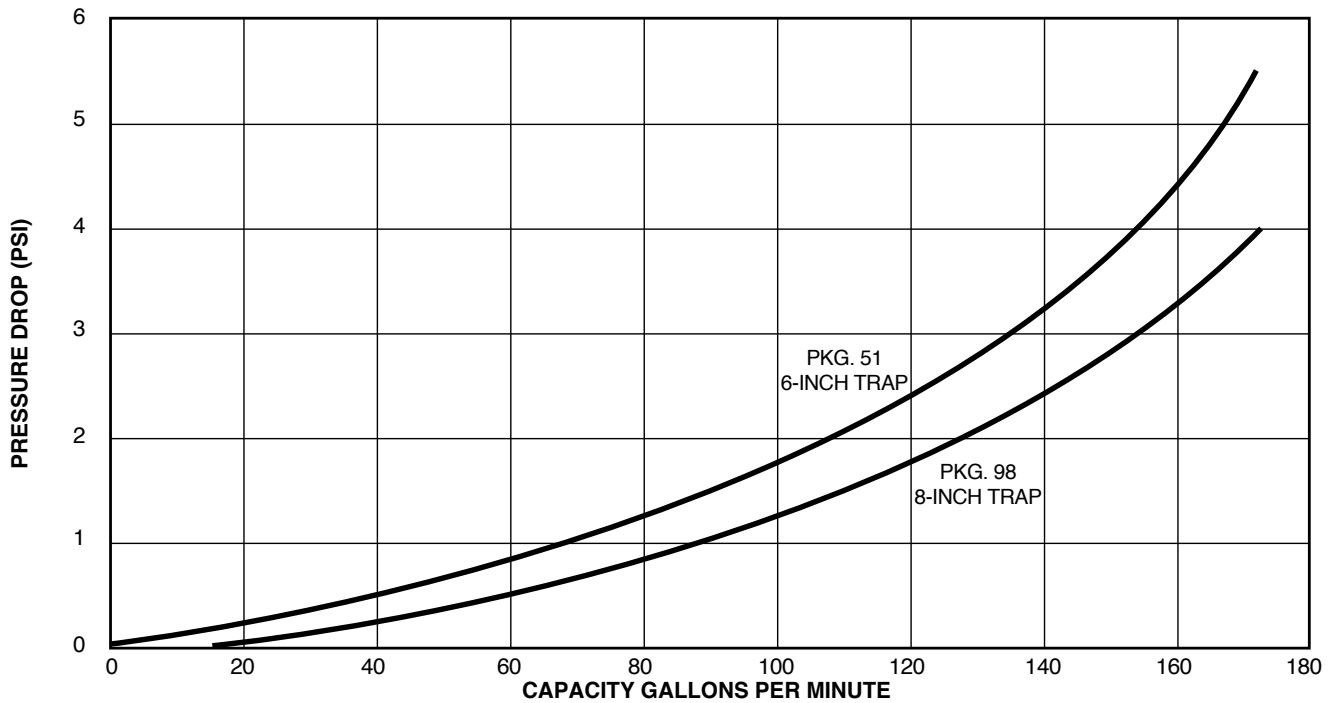
Self-Priming Centrifugal Pumps

6" AND 8" TRAP PACKAGES

| Catalog Number | Description | Suction Port Size | Approx. Wt. Lbs. |
|----------------|---|-------------------|------------------|
| PKG 51 | 6" Cast Iron Trap with Basket (For C, CC, and D Series Pumps) | 2" NPT | 20 |
| PKG 76 | Cast Iron Flange for Remote Installation | 3" NPT | 4 |
| PKG 98 | 8" Cast Iron Trap with Basket (For C, CC, and D Series Pumps) | 3" NPT | 40 |



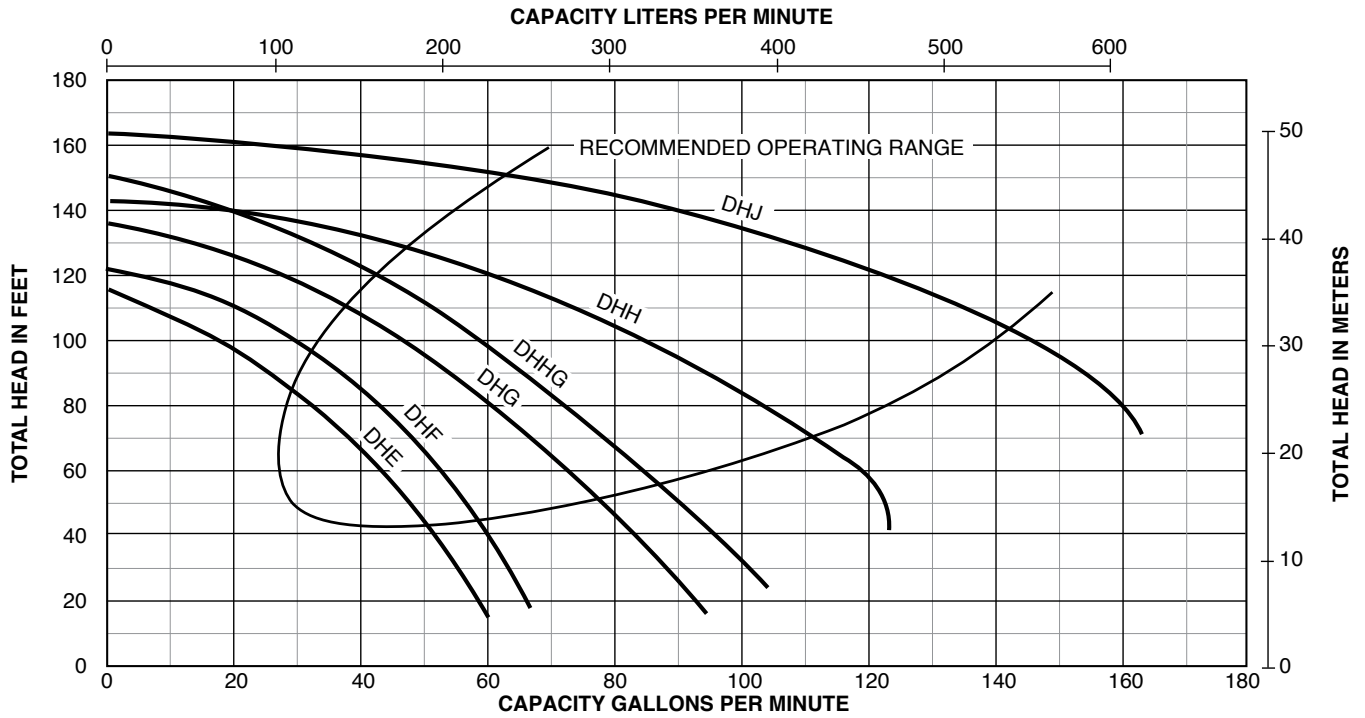
SUCTION TRAP PSI LOSS CURVE



STA-RITE® D Series

Self-Priming Centrifugal Pumps

PUMP PERFORMANCE: HIGH HEAD



PUMP PERFORMANCE (CAPACITY IN GALLONS PER MINUTE)

HIGH HEAD

| Cat. No. | HP | Discharge | | Suction Lift in Feet | | | | |
|----------|-------|-----------|-----------|----------------------|-----|-----|-----|-----|
| | | PSI | Feet Head | 5' | 10' | 15' | 20' | 25' |
| DHE | 1 | 20 | 46.2 | 46 | 43 | 41 | 40 | 38 |
| | | 30 | 69.3 | 35 | 32 | 29 | 25 | 21 |
| | | 40 | 92.4 | 19 | 15 | - | - | - |
| | | 50 | 115.5 | - | - | - | - | - |
| | | 60 | 138.6 | - | - | - | - | - |
| DHF | 1-1/2 | 20 | 46.2 | 55 | 53 | 51 | 49 | 48 |
| | | 30 | 69.3 | 45 | 42 | 39 | 36 | 32 |
| | | 40 | 92.4 | 31 | 27 | 22 | 15 | - |
| | | 50 | 115.5 | - | - | - | - | - |
| | | 60 | 138.6 | - | - | - | - | - |
| DHG | 2 | 20 | 46.2 | 77 | 74 | 71 | 68 | 65 |
| | | 30 | 69.3 | 63 | 60 | 56 | 53 | 49 |
| | | 40 | 92.4 | 48 | 44 | 40 | 36 | 30 |
| | | 50 | 115.5 | 30 | 20 | 13 | - | - |
| | | 60 | 138.6 | - | - | - | - | - |

PUMP PERFORMANCE (CAPACITY IN GALLONS PER MINUTE)

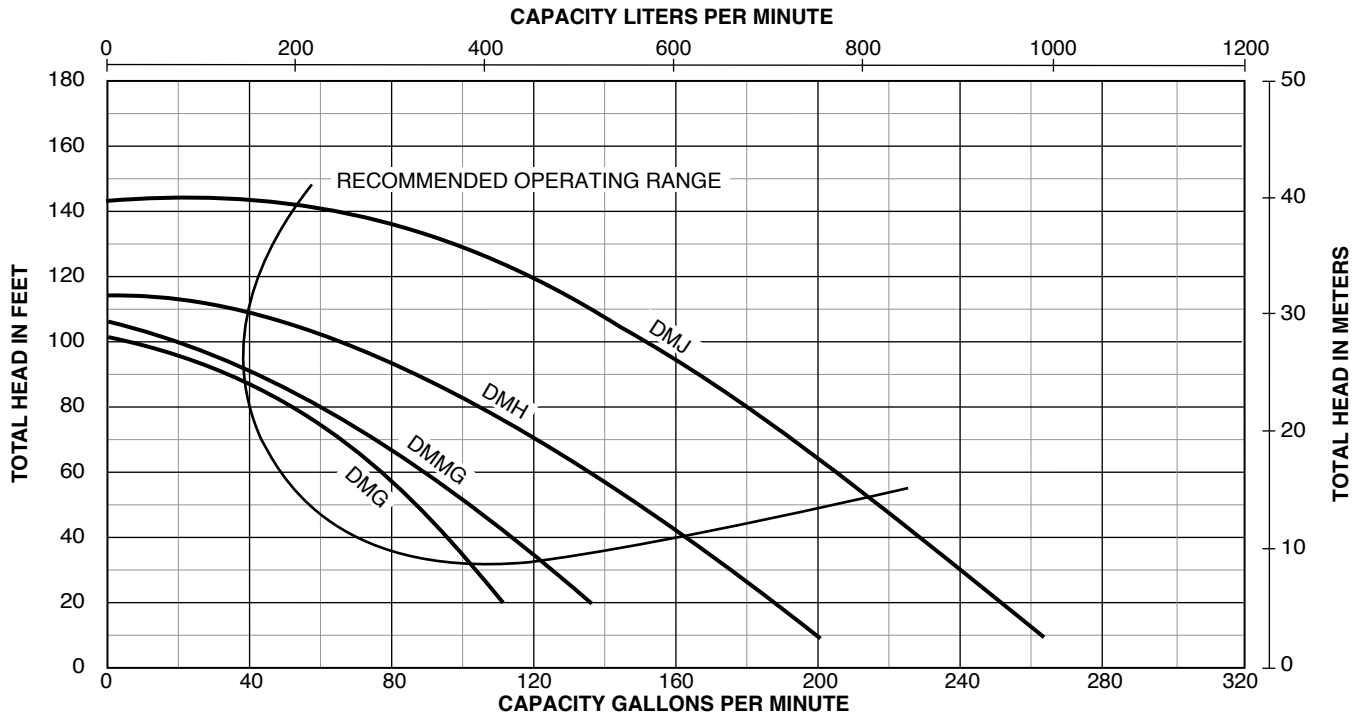
HIGH HEAD

| Cat. No. | HP | Discharge | | Suction Lift in Feet | | | | |
|----------|-------|-----------|-----------|----------------------|-----|-----|-----|-----|
| | | PSI | Feet Head | 5' | 10' | 15' | 20' | 25' |
| DHHG | 2-1/2 | 20 | 46.2 | 89 | 85 | 82 | 80 | 76 |
| | | 30 | 69.3 | 75 | 72 | 68 | 64 | 60 |
| | | 40 | 92.4 | 60 | 57 | 51 | 49 | 42 |
| | | 50 | 115.5 | 42 | 37 | 31 | 25 | 20 |
| | | 60 | 138.6 | 14 | - | - | - | - |
| DHH | 3 | 20 | 46.2 | - | - | - | 112 | 109 |
| | | 30 | 69.3 | 109 | 103 | 98 | 92 | 89 |
| | | 40 | 92.4 | 90 | 75 | 74 | 69 | 62 |
| | | 50 | 115.5 | 62 | 51 | 42 | 32 | 20 |
| | | 60 | 138.6 | - | - | - | - | - |
| DHJ | 5 | 20 | 46.2 | - | - | - | - | - |
| | | 30 | 69.3 | - | - | - | - | - |
| | | 40 | 92.4 | 146 | 141 | 136 | 130 | 122 |
| | | 50 | 115.5 | 122 | 114 | 105 | 99 | 85 |
| | | 60 | 138.6 | 81 | 70 | 50 | 30 | - |

STA-RITE® D Series

Self-Priming Centrifugal Pumps

PUMP PERFORMANCE: MEDIUM HEAD



PUMP PERFORMANCE (CAPACITY IN GALLONS PER MINUTE)

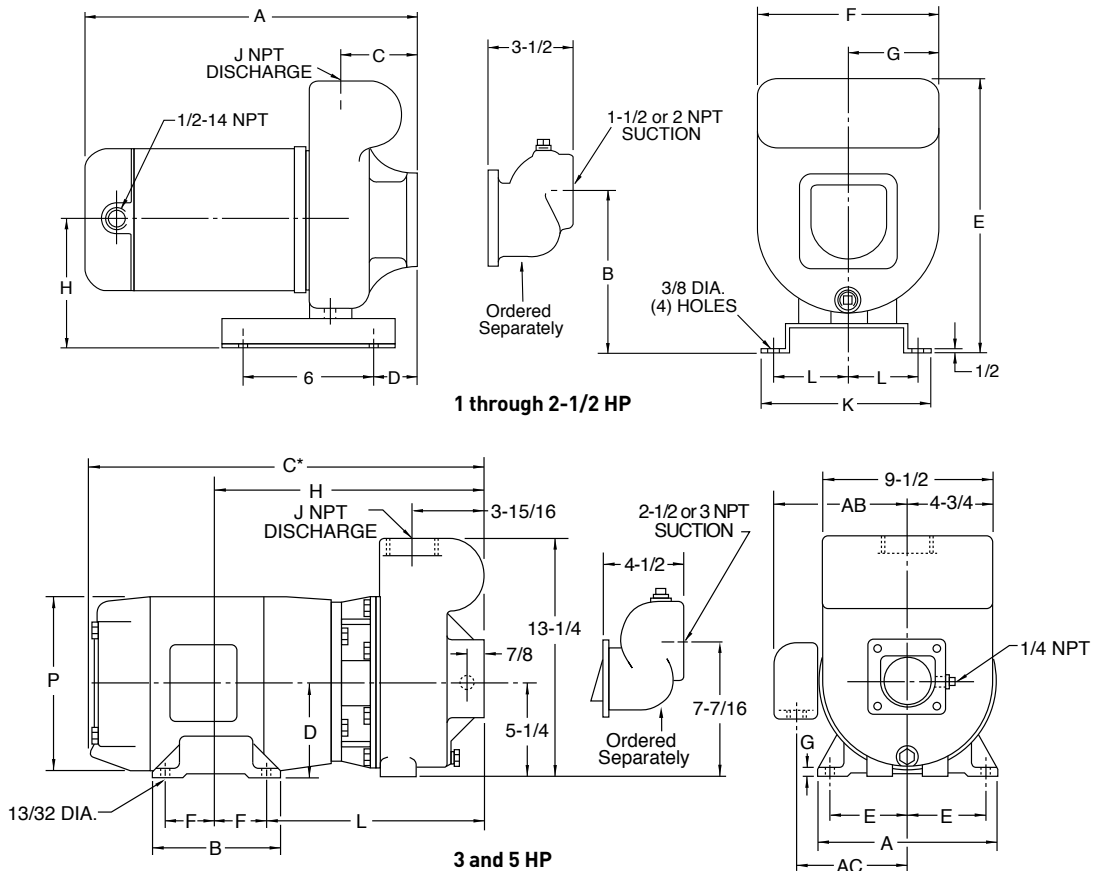
MEDIUM HEAD

| Model | Capacity (GPM) | Total Head (Feet) | | | | | | |
|-------|----------------|-------------------|-------|-----|-----|-----|-----|-----|
| | | 20 | 30 | 40 | 50 | 60 | 70 | 80 |
| DMG | 2 | 20 | 46.2 | 84 | 79 | 74 | 69 | 63 |
| | | 30 | 69.3 | 60 | 53 | 46 | 35 | 20 |
| | | 40 | 92.4 | 22 | - | - | - | - |
| | | 50 | 115.5 | - | - | - | - | - |
| DMMG | 2-1/2 | 20 | 46.2 | 103 | 96 | 90 | 80 | 70 |
| | | 30 | 69.3 | 70 | 60 | 50 | 46 | 30 |
| | | 40 | 92.4 | 30 | 18 | 5 | - | - |
| | | 50 | 115.5 | - | - | - | - | - |
| DMH | 3 | 20 | 46.2 | 149 | 140 | 136 | 124 | 119 |
| | | 30 | 69.3 | 116 | 108 | 99 | 85 | 76 |
| | | 40 | 92.4 | 75 | 65 | 51 | 26 | - |
| | | 50 | 115.5 | - | - | - | - | - |
| DMJ | 5 | 20 | 46.2 | 214 | 209 | 202 | 194 | 182 |
| | | 30 | 69.3 | 185 | 179 | 172 | 165 | 158 |
| | | 40 | 92.4 | 153 | 146 | 139 | 130 | 120 |
| | | 50 | 115.5 | 119 | 107 | 95 | 80 | 50 |

STA-RITE® D Series

Self-priming centrifugal pumps

OUTLINE DIMENSIONS



Dimensions (in inches) are for estimating purposes only.

DIMENSIONS IN INCHES: 1 THROUGH 2-1/2 HP

| Catalog Number | HP | A | B | C | D | E | F | G | H | J | K | L |
|----------------|-------|----------|---------|---------|---------|--------|-------|---------|---------|-------|-------|-------|
| DHE** | 1 | 14-13/16 | 7-1/16 | 3-1/2 | 4 | 11-7/8 | 7-7/8 | 3-15/16 | 5-13/16 | 1-1/2 | 7-1/2 | 3-3/8 |
| DHF** | 1-1/2 | 15-11/16 | 7-1/16 | 3-1/2 | 4 | 11-7/8 | 7-7/8 | 3-15/16 | 5-13/16 | 1-1/2 | 7-1/2 | 3-3/8 |
| DHG | 2 | 17-11/16 | 7-13/16 | 3-15/16 | 3-13/16 | 14-3/8 | 9-1/2 | 4-3/4 | 6-9/16 | 2 | 7-1/2 | 3-3/8 |
| DHHG | 2-1/2 | 18-11/16 | 7-13/16 | 3-15/16 | 3-13/16 | 14-3/8 | 9-1/2 | 4-3/4 | 6-9/16 | 2 | 7-1/2 | 3-3/8 |
| DMG** | 2 | 16-15/16 | 7-1/16 | 3-1/2 | 4 | 11-7/8 | 7-7/8 | 3-15/16 | 5-13/16 | 1-1/2 | 7-1/2 | 3-3/8 |
| DMMG** | 2-1/2 | 17-15/16 | 7-1/16 | 3-1/2 | 4 | 11-7/8 | 7-7/8 | 3-15/16 | 5-13/16 | 2 | 7-1/2 | 3-3/8 |

DIMENSIONS IN INCHES: 3 AND 5 HP

| Catalog Number | HP | A | B | C* | D | E | F | G | H | J | L | P | AB | AC |
|----------------|----|---|---|--------|-------|-------|-------|-----|--------|----------|--------|-------|-------|-------|
| DHH | 3 | 9 | 6 | 20-3/4 | 4-1/2 | 3-3/4 | 2-1/4 | 1/2 | 15 | 1 - 1/2" | 12-3/4 | 9-3/4 | 8-1/8 | 6-1/2 |
| DHJ | 5 | 9 | 7 | 21-3/4 | 4-1/2 | 3-3/4 | 2-3/4 | 1/2 | 15-1/2 | 2" | 12-3/4 | 9-3/4 | 9 | 7 |
| DMH | 3 | 9 | 6 | 20-3/4 | 4-1/2 | 3-3/4 | 2-1/4 | 1/2 | 15 | 2" | 12-3/4 | 9-3/4 | 8-1/8 | 6-1/2 |
| DMJ | 5 | 9 | 7 | 21-3/4 | 4-1/2 | 3-3/4 | 2-3/4 | 1/2 | 15-1/2 | 2 - 1/2" | 12-3/4 | 9-3/4 | 9 | 7 |

*Overall length (C) is shown for single-phase motors. Three-phase motors are slightly smaller. Dimensions are for estimating purposes only.

**Pump body has additional built in 1-1/2" NPT side discharge tap.



293 WRIGHT STREET, DELAVAN, WI 53115 WWW.STA-RITE.COM PH: 888-782-7483 ORDERS FAX: 800-426-9446
Because we are continuously improving our products and services, Pentair reserves the right to change specifications without prior notice.