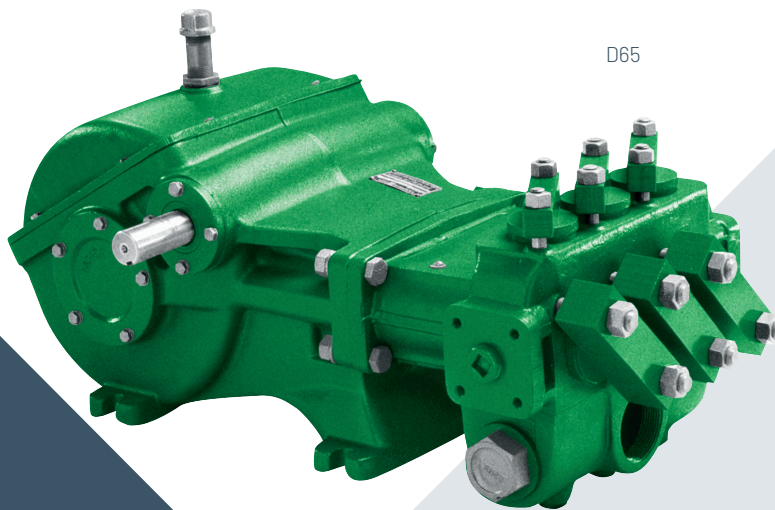


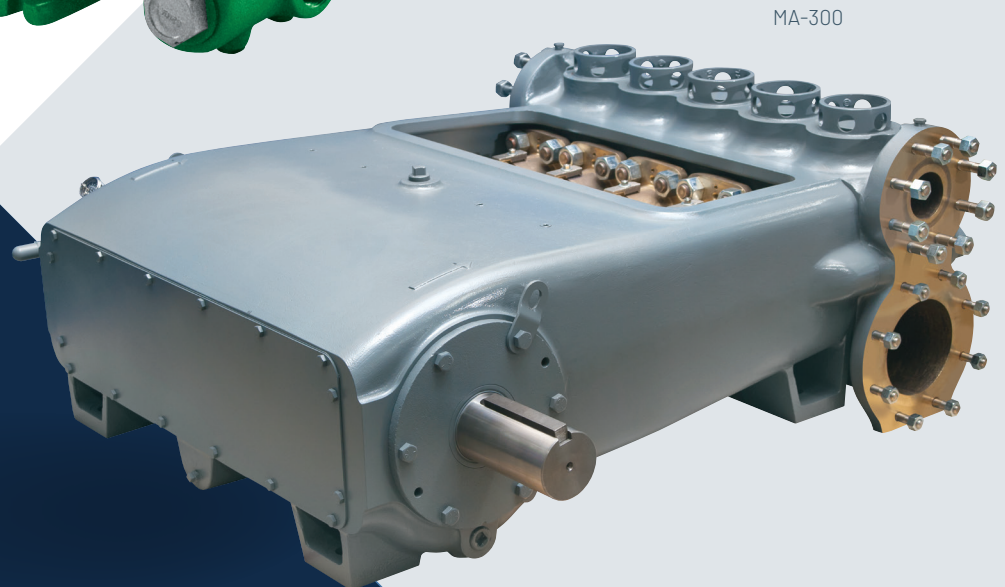


200 East Big Beaver Road
Troy, MI 48083
P: (248) 752-2620
E: Sales@oemsalesinc.com

RECIPROCATING PUMPS



D65



MA-300

PENTAIR MYERS® AND
PENTAIR MYERS APLEX SERIES

WWW.PENTAIR.COM/EN/BRANDS/MYERS

PETNAIR MYERS® AND PENTAIR MYERS APLEX SERIES Complete Line of Reciprocating Pumps

History of Pentair Myers

Myers was founded in 1870 by brothers Frances and Philip Myers in Ashland, Ohio. The brothers began by building farm implements, then engineered and manufactured the first double-acting hand pump. From this modest beginning, the Myers pump line grew and evolved over the decades to include wastewater removal and industrial pumps and systems. In 1960, the Myers family sold the business to the McNeil Corporation of Akron, Ohio. In 1986 Pentair, Inc. of St. Paul, Minnesota, acquired Myers, which now is part of Pentair, Ltd. The Ashland operation includes over 410,000 square feet of warehouse, manufacturing, distribution, foundry and office facilities and employs approximately 600 people dedicated to supplying quality products.

Pentair combines manufacturing expertise and understanding of applications to provide a pump with strength and versatility for any demanding high-pressure job. The Myers line of industrial high pressure pumps are designed, developed, manufactured, assembled and tested in Ashland, Ohio, U.S.A.

Addition of Pentair Myers Aplex Series

In 1996, Pentair Myers Aplex Series products were added to the Pentair Myers industrial line. The Pentair Myers Aplex Series product line dates back to the 1960's oilfield pump industry. The Pentair Myers Aplex Series pump line has since grown to be one of the most highly recognized and accepted pumps offered in a variety of industries. Our pumps are utilized in, but not limited to, the oil and gas, directional drilling, sewer cleaning, water treatment, steel mills and other industrial markets requiring a pump that stands up to demanding and hostile applications.

The Pentair Myers Aplex Series pump has a myriad of features that sets it apart from its competitors. These are mostly centered around ease of maintenance and "user friendly" designs. A wide range of optional configurations are used on each application to tailor fit each customer's needs to furnish a pump for long-term dependable performance for years to come. Each pump is also available with a variety of options including integral hydraulic drives, base mountings and a wide selection of auxiliary equipment to address each unique installation.

Pentair Myers Aplex Series builds the most reliable medium and heavy-duty reciprocating pumps in the world. We produce products that outlast the others in both domestic and international markets. In addition, we deliver service and technical support that outshines the competition worldwide.

Complete Reciprocating Line

Pentair's Myers line is recognized worldwide for quality, service and innovation. The Industrial Pump Division realizes that success in today's global environment depends on much more than brick and mortar. Pentair's focus is on the customer and their needs. The addition of the Aplex Series has broadened our range of pump offerings, allowing us to offer a more complete line of medium and heavy-duty reciprocating pumps to fit almost any application. Pentair Myers Aplex Series is positioned to strongly encourage the customer to challenge us with special-purpose, industrial or commercial pump application. The combination of extraordinary customer service, superior manufacturing capabilities and new products for niche markets make a powerful culture for growth. Our philosophy, from top to bottom, is one of flexibility, creativity and responsiveness to customer needs. Replacement and service parts are readily available worldwide.

PUMP FEATURES

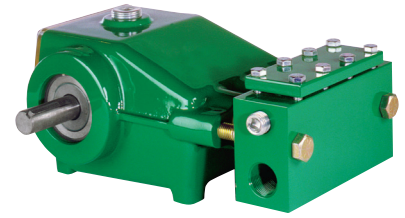
- Reliable, trouble-free performance
- Built for field serviceability
- A broad product line ranging from 5 to 400 HP (3.7 to 298.3 kW)
- Pressures up to 5,500 psi (379.2 bar) and flows to 600 gpm (2271 lpm)
- Temperature ratings up to 450°F (232°C)
- Able to pump a wide range of corrosive fluids from acids to caustics
- Extra-large oil sump for superior lubrication

RANGE OF APPLICATIONS

- Gas sweetening and drying
- Crude oil gathering, pipelining and transfer
- Power oil /power water hydraulic services
- Water blasting and cutting
- Steel mill de-scaling
- Mine de-watering
- Toxic and hazardous waste disposal
- Sewer cleaning
- Hydrostatic testing
- Reverse osmosis (desalination)
- NGL transfer
- Bentonite slurry pumping
- Water well fracking
- Food processing
- Chemical processing
- Car and truck wash
- And much more

BXM6-15

Extra-large oil reservoir provides superior lubrication, while insuring more effective cooling and less maintenance. The crankshaft is field-reversible for application flexibility. Easy access to suction and discharge valves means no need to remove pump from system for repair. Factory tested for continuous service with only simple, routine maintenance.



BX Pump Features

- Flows to 8 gpm (30.3 lpm)
- Pressure ratings up to 1,500 psi (103.4 bar)
- Easy access to valves for servicing
- Whisper quiet operation
- Extra-large oil sump for superior lubrication
- Clear rear cover for easy oil level inspection

	Piston Size in. (mm)	Max. psi (bar)	*Gallon (Liter) Per/Rev	400 RPM US gpm (lpm)	500 RPM US gpm (lpm)	600 RPM US gpm (lpm)	700 RPM US gpm (lpm)	800 RPM US gpm (lpm)		
BXM6-15	1.000 (25.4)	1500 (103.4)	.0108 (.0410)	4.3 (16.4)	5.4 (20.5)	6.5 (24.6)	*NA	*NA	Flows: 3 - 7 gpm (11.4 - 26.5 lpm) psi: 200 - 1500 (bar: 13.8 - 103.4) Stroke Length: 1.06 in. (27 mm) Weight: 60 lbs. (27.2 kg)	Max. HP 6 (4.5 kW)
	HP (Kilowatts) required @ RPM**			4.5 (3.3)	5.6 (4.2)	6.7 (5.0)	*NA	*NA		
	1.000 (25.4)	1000 (68.9)	.0108 (.0410)	4.3 (16.4)	5.4 (20.5)	6.5 (24.6)	7.6 (28.7)	8.7 (32.8)		
	HP (Kilowatts) required @ RPM**			3.0 (2.2)	3.7 (2.8)	4.5 (3.3)	5.2 (3.9)	6.0 (4.4)		

Metallurgy is available in Carbon Steel or Aluminum Bronze

* Displacement based on 100% volumetric efficiency

** Power based on 85% mechanical efficiency

CX Series

Rugged design for continuous operation. Three suction ports for installation versatility. Smooth solid ceramic cylinder liners allow continuous operation at maximum pressure and flow. Large concentric suction and discharge valves allow complete filling of cylinders. Solid cast iron power end with constant lubrication of all working parts. Fluid end available in high-strength cast iron, aluminum-bronze.



CX Pump Features

- Flows to 20 gpm (75.7 lpm)
- Pressure ratings to 1,500 psi (103.4 bar)
- Constant lubrication of all power end parts
- Spring loaded chevron style packing

	Piston Size in. (mm)	Max. psi (bar)	*Gallon (Liter) Per/Rev	300 RPM US gpm (lpm)	400 RPM US gpm (lpm)	450 RPM US gpm (lpm)	500 RPM US gpm (lpm)	560 RPM US gpm (lpm)		
CX10-15	1.25 (31.75)	1500 (103.4)	.0199 (.0753)	5.9 (22.3)	7.9 (29.9)	8.9 (33.7)	9.9 (37.5)	11.1 (42.0)	Flows: 5 - 11 gpm (18.9 - 41.6 lpm) psi: 400 - 1500 (bar: 27.6 - 103.4) Stroke Length: 1.25 in. (31.75 mm) Weight: 104 lbs. (47.2 kg)	Max. HP 11 (8.2 kW)
	HP (Kilowatts) required @ RPM**			6.0 (4.5)	8.1 (6.0)	9.1 (6.8)	10.1 (7.5)	11.0 (8.2)		
CX20-10	1.75 (44.5)	1000 (68.9)	.039 (.148)	11.7 (44.3)	15.6 (59.1)	17.5 (66.2)	19.5 (73.8)	21.8 (82.5)	Flows: 11 - 21 gpm (41.6 - 79.5 lpm) psi: 300 - 1000 (bar: 20.7 - 68.9) Stroke Length: 1.25 in. (31.75 mm) Weight: 104 lbs. (47.2 kg)	Max. HP 14 (10.4 kW)
	HP (Kilowatts) required @ RPM**			8.0 (6.0)	10.7 (8.0)	12.0 (9.0)	13.3 (10.0)	14.0 (10.4)		

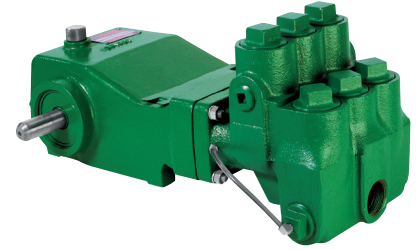
Metallurgy is available in Ductile Iron, Aluminum Bronze

* Displacement based on 100% volumetric efficiency

** Power based on 85% mechanical efficiency

CXP Series

These pumps offer seven interchangeable plunger and seal packages, allowing complete hydraulic coverage. Optimum flow and pressure is easily converted, even in the field by changing the plunger and seal kit. Cylinder body of high-strength ductile iron.



CXP Series Pump Features

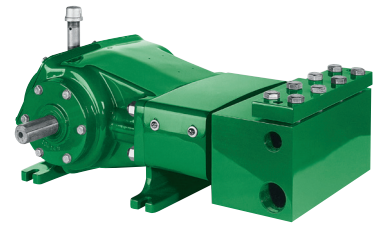
- Flows to 30 gpm (113.6 lpm)
- Pressure ratings to 3,500 psi (241.3 bar)
- Continuous splash lubrication provided either direction of rotation
- Offerings of seven interchangeable plunger and seal packages
- Easily serviced in field without removal of pump

	Plunger Size in. (mm)	Max. psi (bar)	*Gallon (Liter) Per/Rev	300 RPM US gpm (lpm)	400 RPM US gpm (lpm)	450 RPM US gpm (lpm)	500 RPM US gpm (lpm)	560 RPM US gpm (lpm)		
CXP5-35	.875 (22.225)	3500 (241.3)	.0097 (.0367)	2.9 (10.98)	3.9 (14.8)	4.4 (16.7)	4.9 (18.5)	5.5 (20.8)	Flows: 3 - 5 gpm (11.4 - 18.9 lpm) psi: 2500 - 3500 (bar: 172.4 - 241.3) Stroke Length: 1.25 in. (31.75 mm) Weight: 104 lbs. (47.2 kg)	Max. HP 13 (9.7 kW)
	HP (Kilowatts) required @ RPM**			7.0 (5.2)	9.4 (7.0)	10.6 (7.9)	11.8 (8.8)	13.0 (9.7)		
CXP7-30	1.000 (25.4)	3000 (206.8)	.0127 (.0481)	3.8 (14.4)	5.1 (19.3)	5.7 (21.6)	6.4 (24.2)	7.1 (26.9)	Flows: 3 - 7 gpm (11.4 - 26.5 lpm) psi: 2000 - 3000 (bar: 137.9 - 206.8) Stroke Length: 1.25 in. (31.75 mm) Weight: 104 lbs. (47.2 kg)	Max. HP 15 (11.2 kW)
	HP (Kilowatts) required @ RPM**			7.8 (5.8)	10.5 (7.8)	11.7 (8.7)	13.2 (9.8)	15.0 (11.2)		
CXP14-24	1.125 (28.6)	2450 (168.9)	.0161 (.0611)	10.5 (39.7)	12.1 (45.8)	12.9 (48.8)	13.7 (51.9)	14.5 (54.9)	Flows: 10 - 14 gpm (37.9 - 53.0 lpm) psi: 1400 - 2450 (bar: 96.5 - 168.9) Stroke Length: 1.25 in. (31.75 mm) Weight: 104 lbs. (47.2 kg)	Max. HP 25 (18.6 kW)
	HP (Kilowatts) required @ RPM**			17.7 (13.2)	20.3 (15.1)	21.7 (16.2)	23.0 (17.2)	25.0 (18.6)		
CXP18-20	1.250 (31.8)	2000 (137.9)	.0199 (.0754)	12.9 (48.8)	14.9 (56.4)	15.9 (60.2)	16.9 (64.0)	17.9 (67.8)	Flows: 12 - 17 gpm (45.4 - 64.4 lpm) psi: 1000 - 2000 (bar: 68.9 - 137.9) Stroke Length: 1.25 in. (31.75 mm) Weight: 104 lbs. (47.2 kg)	Max. HP 25 (18.6 kW)
	HP (Kilowatts) required @ RPM**			17.7 (13.2)	20.5 (15.3)	21.8 (16.3)	23.2 (17.3)	25.0 (18.6)		
CXP22-16	1.375 (34.9)	1650 (113.8)	.0241 (.0912)	15.7 (59.4)	18.1 (68.5)	19.3 (73.1)	20.5 (77.6)	21.7 (82.1)	Flows: 15 - 21 gpm (56.8 - 79.5 lpm) psi: 600 - 1650 (bar: 41.4 - 113.8) Stroke Length: 1.25 in. (31.75 mm) Weight: 104 lbs. (47.2 kg)	Max. HP 25 (18.6 kW)
	HP (Kilowatts) required @ RPM**			17.8 (13.3)	20.5 (15.3)	21.9 (16.3)	23.2 (17.3)	25.0 (18.6)		
CXP26-14	1.500 (38.1)	1400 (96.5)	.0286 (.1083)	18.6 (70.4)	21.5 (81.4)	23.0 (87.1)	24.4 (92.4)	25.8 (97.7)	Flows: 18 - 25 gpm (68.1 - 94.6 lpm) psi: 400 - 1400 (bar: 27.6 - 96.5) Stroke Length: 1.25 in. (31.75 mm) Weight: 104 lbs. (47.2 kg)	Max. HP 25 (18.6 kW)
	HP (Kilowatts) required @ RPM**			17.9 (13.3)	20.7 (15.4)	22.1 (16.5)	23.4 (17.4)	25.0 (18.6)		
CXP30-12	1.625 (41.3)	1200 (82.7)	.0336 (.1272)	21.9 (82.9)	25.3 (95.8)	26.9 (101.8)	28.6 (108.3)	30.3 (114.7)	Flows: 21 - 30 gpm (79.5 - 113.6 lpm) psi: 200 - 1200 (bar: 13.8 - 82.7) Stroke Length: 1.25 in. (31.75 mm) Weight: 104 lbs. (47.2 kg)	Max. HP 25 (18.6 kW)
	HP (Kilowatts) required @ RPM**			18.0 (13.4)	20.8 (15.5)	36.9 (27.5)	23.6 (17.6)	25.0 (18.6)		

Metallurgy is available in Ductile Iron
 * Displacement based on 100% volumetric efficiency
 ** Power based on 85% mechanical efficiency

CPM

Superior equipment technology allows the versatility to machine the pump end from a selection of standard or optional materials. Removable cover section for easy service and is available with hydraulic drive adaption.



CPM Pump Features

- Flows to 247 gpm (90.8 lpm)
- Pressure ratings up to 4,000 psi (275.8 bar)
- Crankshaft rotates in either direction
- Continuous splash lubrication provided
- Cast Iron crankcase serves as oil reservoir

CPM18-40	Plunger Size in. (mm)	Max. psi (bar)	*Gallon (Liter) Per/Rev	200 RPM US gpm (lpm)	363 RPM US gpm (lpm)	483 RPM US gpm (lpm)	604 RPM US gpm (lpm)	725 RPM US gpm (lpm)	Flows: 5 - 20 gpm (18.9 - 75.7 lpm) psi: 1200 - 4000 (bar: 82.7 - 275.8) Stroke Length: 1.75 in. (44.45 mm) Weight: 300 lbs. (136 kg)	Max. HP 55 (41.0 kW)
	1.25 (31.75)	4000 (275.8)	.0278 (.1052)	5.5 (20.82)	10.0 (37.9)	13.4 (50.7)	16.7 (63.2)	20.1 (76.1)		
HP (Kilowatts) required @ RPM**				15.0 (11.2)	27.4 (20.4)	36.7 (27.4)	45.8 (34.2)	55.0 (41.0)		

Metallurgy is available in Carbon Steel or Stainless Steel

CPM24-30	Plunger Size in. (mm)	Max. psi (bar)	*Gallon (Liter) Per/Rev	200 RPM US gpm (lpm)	363 RPM US gpm (lpm)	483 RPM US gpm (lpm)	604 RPM US gpm (lpm)	725 RPM US gpm (lpm)	Flows: 2 - 22 gpm (7.6 - 83.3 lpm) psi: 1000 - 3000 (bar: 68.9 - 206.8) Stroke Length: 1.75 in. (44.45 mm) Weight: 300 lbs. (136 kg)	Max. HP 46 (34.3 kW)
	1.5 (38.1)	3000 (206.8)	.0402 (.1520)	8.0 (30.4)	14.6 (55.2)	19.4 (73.4)	24.3 (91.8)	29.1 (110.2)		
HP (Kilowatts) required @ RPM**				16.5 (12.3)	30.0 (22.4)	39.9 (29.8)	49.9 (37.2)	60.0 (44.7)		

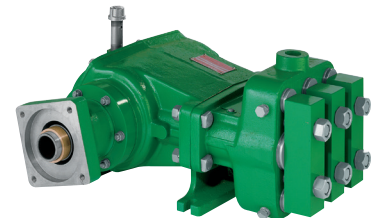
Metallurgy is available in Carbon Steel or Stainless Steel

* Displacement based on 100% volumetric efficiency

** Power based on 85% mechanical efficiency

C Series

Heavy-duty piston pump with high-strength fluid end and spring-loaded flat valves for economical high-pressure pumping of large volumes of fluid. Crankshaft can be rotated in either direction making installation easier.



C Series Pump Features

- Flows to 40 gpm (151.4 lpm)
- Pressure ratings to 2,500 psi (172.4 bar)
- High-strength fluid end with spring-loaded flat valves for consistent high pressure pumping
- Easily serviced in field without removal of pump

C15-30	Piston Size in. (mm)	Max. psi (bar)	*Gallon (Liter) Per/Rev	200 RPM US gpm (lpm)	300 RPM US gpm (lpm)	400 RPM US gpm (lpm)	500 RPM US gpm (lpm)	550 RPM US gpm (lpm)	Flows: 5 - 15 gpm (19 - 56.8 lpm) psi: 700-3000 (bar: 670 - 2873) Stroke Length: 1.75 in. (44.45 mm) Weight: 300 lbs. (136 kg)	Max. HP 32 (23.9 kW)
	1.25 (31.75)	3000 (206.8)	.0278 (.1052)	5.5 (21.0)	8.3 (31.5)	11.1 (42.0)	13.9 (52.6)	15.3 (57.9)		
HP (Kilowatts) required @ RPM**				11.3 (8.4)	17.1 (12.7)	22.9 (17.1)	28.6 (21.3)	31.5 (23.5)		
C25-25	Piston Size in. (mm)	Max. psi (bar)	*Gallon (Liter) Per/Rev	200 RPM US gpm (lpm)	325 RPM US gpm (lpm)	425 RPM US gpm (lpm)	525 RPM US gpm (lpm)	625 RPM US gpm (lpm)	Flows: 8 - 25 gpm (30.3 - 94.6 lpm) psi: 700 - 2500 (bar: 48.3 - 172.4) Stroke Length: 1.75 in. (44.45 mm) Weight: 300 lbs. (136 kg)	Max. HP 42 (31.3 kW)
	1.50 (38.1)	2500 (172.4)	.0401 (.1518)	8.0 (30.3)	13.0 (49.2)	17.0 (64.4)	21.0 (79.5)	25.0 (94.6)		
HP (Kilowatts) required @ RPM**				13.8 (10.3)	22.3 (16.6)	29.1 (21.7)	36.0 (26.8)	42.0 (31.3)		
C35-20	Piston Size in. (mm)	Max. psi (bar)	*Gallon (Liter) Per/Rev	200 RPM US gpm (lpm)	375 RPM US gpm (lpm)	475 RPM US gpm (lpm)	575 RPM US gpm (lpm)	675 RPM US gpm (lpm)	Flows: 10 - 36 gpm (37.8 - 136.3 lpm) psi: 600 - 2000 (bar: 41.4 - 137.9) Stroke Length: 1.75 in. (44.45 mm) Weight: 300 lbs. (136 kg)	Max. HP 50 (37.3 kW)
	1.75 (44.45)	2000 (137.9)	.0546 (.2069)	10.9 (41.3)	20.4 (77.2)	25.9 (98.0)	31.3 (118.5)	36.8 (139.3)		
HP (Kilowatts) required @ RPM**				14.9 (11.1)	28.0 (20.9)	35.5 (26.5)	42.9 (32.0)	50.0 (37.3)		
C40-20	Piston Size in. (mm)	Max. psi (bar)	*Gallon (Liter) Per/Rev	200 RPM US gpm (lpm)	300 RPM US gpm (lpm)	375 RPM US gpm (lpm)	475 RPM US gpm (lpm)	575 RPM US gpm (lpm)	Flows: 14 - 41 gpm (53.0 - 155.2 lpm) psi: 600 - 2000 (bar: 41.4 - 137.9) Stroke Length: 1.75 in. (44.45 mm) Weight: 300 lbs. (136 kg)	Max. HP 56 (41.8 kW)
	2.00 (50.8)	2000 (137.9)	.0714 (.2703)	14.2 (53.8)	21.4 (81.0)	26.7 (101.1)	33.9 (128.3)	41.0 (155.2)		
HP (Kilowatts) required @ RPM**				19.4 (14.5)	29.3 (21.8)	36.6 (27.3)	46.5 (34.7)	56.0 (41.8)		

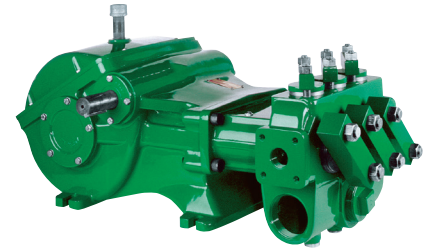
Metallurgy available in Ductile Iron only

*Displacement based on 100% volumetric efficiency

**Power based on 85% mechanical efficiency

D Series

Slow operating speed reduces wear and prolongs pump life. The fluid end is available in ductile iron or aluminum bronze with flat valves, making routine maintenance easy without removing the pump from the system. All the valve and piston assemblies are serviceable through convenient front and top openings.



D Series Pump Features

- Flows to 65 gpm (246 lpm)
- Pressure ratings up to 2,000 psi (137.9 bar)
- Internal gear reductions
- Continuous splash lubrication provided either direction of rotation

D35-8PP	Piston Size in. (mm)	Max. psi (bar)	*Gallon (Liter) Per/Rev	600 RPM US gpm (lpm)	650 RPM US gpm (lpm)	700 RPM US gpm (lpm)	750 RPM US gpm (lpm)	800 RPM US gpm (lpm)	Flows: 26 – 34 gpm (98.4 – 128.7 lpm) psi: 600 – 1200 (bar: 41.4 – 82.74) Stroke Length: 2.875 in. (73.03 mm) Weight: 525 lbs. (238.1 kg)	Max. HP 30 (22.4 kW)
	2.25 (57.15)	1200 (82.74)	.0437 (.1654)	26.2 (99.2)	28.4 (107.5)	30.5 (115.5)	32.7 (123.8)	34.9 (132.1)		
HP (Kilowatts) required @ RPM**			21.5 (16.0)	23.3 (17.4)	25.1 (18.7)	26.9 (20.1)	30.0 (22.4)			
D35-12	Piston Size in. (mm)	Max. psi (bar)	*Gallon (Liter) Per/Rev	725 RPM US gpm (lpm)	825 RPM US gpm (lpm)	925 RPM US gpm (lpm)	1025 RPM US gpm (lpm)	1075 RPM US gpm (lpm)	Flows: 25 – 37 gpm (94.6 – 140.1 lpm) psi: 600 – 2000 (bar: 41.4 – 82.74) Stroke Length: 2.875 in. (73.03 mm) Weight: 525 lbs. (238.1 kg)	Max. HP 30 (22.4 kW)
	2.00 (50.8)	1200 (82.74)	.0346 (.1310)	25.0 (94.6)	28.5 (107.9)	32.0 (121.1)	35.4 (134.0)	37.1 (140.4)		
HP (Kilowatts) required @ RPM**			20.5 (15.3)	23.4 (17.4)	26.3 (19.6)	29.1 (21.7)	30.0 (22.4)			

*D35 Series have internal gear reduction of 3.39:1

D50-12	Piston Size in. (mm)	Max. psi (bar)	*Gallon (Liter) Per/Rev	725 RPM US gpm (lpm)	825 RPM US gpm (lpm)	925 RPM US gpm (lpm)	1025 RPM US gpm (lpm)	1075 RPM US gpm (lpm)	Flows: 35 – 52 gpm (132.5 – 196.8 lpm) psi: 400 – 1200 (bar: 27.58 – 82.74) Stroke Length: 3.75 in. (95.25 mm) Weight: 525 lbs. (238.1 kg)	Max. HP 45 (33.6 kW)
	2.25 (57.15)	1200 (82.74)	.0490 (.1855)	35.5 (134.4)	40.4 (152.9)	45.3 (171.5)	50.2 (190.0)	52.6 (199.1)		
HP (Kilowatts) required @ RPM**			29.2 (21.8)	33.2 (24.8)	37.3 (27.8)	41.3 (30.8)	45.0 (33.6)			
D60-10	Piston Size in. (mm)	Max. psi (bar)	*Gallon (Liter) Per/Rev	725 RPM US gpm (lpm)	825 RPM US gpm (lpm)	925 RPM US gpm (lpm)	1025 RPM US gpm (lpm)	1075 RPM US gpm (lpm)	Flows: 43 – 65 gpm (162.7 – 246.1 lpm) psi: 400 – 1000 (bar: 27.58 – 68.95) Stroke Length: 3.75 in. (95.25 mm) Weight: 525 lbs. (238.1 kg)	Max. HP 45 (33.6 kW)
	2.50 (63.5)	1000 (68.95)	.0605 (.2290)	43.8 (165.8)	49.9 (188.9)	55.9 (211.6)	62.0 (234.7)	65.0 (246.1)		
HP (Kilowatts) required @ RPM**			30.0 (22.4)	34.2 (25.5)	38.3 (28.6)	42.5 (31.7)	45.0 (33.6)			
D65-16	Piston Size in. (mm)	Max. psi (bar)	*Gallon (Liter) Per/Rev	1112 RPM US gpm (lpm)	1247 RPM US gpm (lpm)	1446 RPM US gpm (lpm)	1490 RPM US gpm (lpm)	1570 RPM US gpm (lpm)	Flows: 48 – 68 gpm (181.7 – 257.4 lpm) psi: 1000 – 1600 (bar: 68.95 – 110.3) Stroke Length: 3.75 in. (95.25 mm) Weight: 525 lbs. (238.1 kg)	Max. HP 75 (55.9 kW)
	2.125 (53.98)	1600 (110.3)	.0437 (.1654)	48.5 (183.6)	54.4 (205.9)	63.1 (238.9)	65.1 (246.4)	68.6 (259.7)		
HP (Kilowatts) required @ RPM**			53.2 (39.7)	59.9 (44.7)	69.2 (51.6)	71.4 (53.2)	75.0 (55.9)			
D65-20	Piston Size in. (mm)	Max. psi (bar)	*Gallon (Liter) Per/Rev	1000 RPM US gpm (lpm)	1200 RPM US gpm (lpm)	1400 RPM US gpm (lpm)	1600 RPM US gpm (lpm)	1800 RPM US gpm (lpm)	Flows: 38 – 69 gpm (143.8 – 261.2 lpm) psi: 1000 – 2000 (bar: 68.95 – 137.9) Stroke Length: 3.75 in. (95.25 mm) Weight: 525 lbs. (238.1 kg)	Max. HP 95 (70.8 kW)
	2.00 (50.8)	2000 (137.9)	.0387 (.1465)	38.7 (146.5)	46.4 (175.6)	54.1 (204.8)	61.9 (234.3)	69.6 (263.5)		
HP (Kilowatts) required @ RPM**			53.1 (39.6)	63.6 (47.4)	74.2 (55.3)	84.9 (63.3)	95.0 (70.8)			

Metallurgy is available in Ductile Iron or Aluminum Bronze

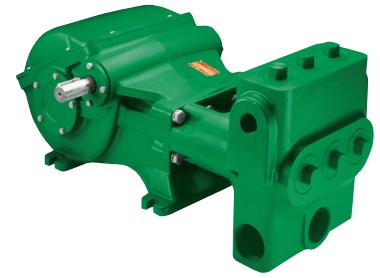
* Displacement based on 100% volumetric efficiency

** Power based on 85% mechanical efficiency

"D" Series have an internal gear reduction of 3.95:1 – except as noted

DP Series

Pentair Myers high volume/pressure series offers interchangeable plungers, seals, and fluid ends to provide various flow/pressure ratings. Also available in hydraulic drive configuration.



DP Series Pump Features

- Flows to 120 gpm (454.2 lpm)
- Pressure ratings up to 5,500 psi (379.2 bar)
- Internal gear reductions of 3.95:1
- Super hard, non-scoring plungers
- Suction and discharge located for easy service
- Offerings of seven interchangeable plunger and seal packages

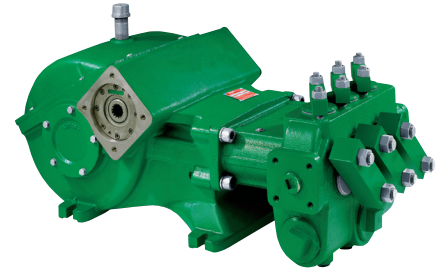
	Plunger Size in. (mm)	Max. psi (bar)	*Gallon (Liter) Per/Rev	1000 RPM US gpm (lpm)	1200 RPM US gpm (lpm)	1400 RPM US gpm (lpm)	1750 RPM US gpm (lpm)	1800 RPM US gpm (lpm)		
DP28-55	1.25 (31.75)	5500 (379.2)	.0151 (.0572)	15.1 (57.2)	18.1 (68.5)	21.1 (79.9)	26.4 (99.9)	27.2 (103.0)	Flows: 15 – 27 gpm (56.8 – 102.2 lpm) psi: 4500 – 5500 (bar: 310.3 – 379.2) Stroke Length: 3.75 in. (95.25 mm) Weight: 725 lbs. (328.9 kg)	Max. HP 102 (76.1 kW)
	HP (Kilowatts) required @ RPM**			57.0 (42.5)	68.3 (50.9)	76.6 (57.1)	99.6 (74.3)	102.0 (76.1)		
DP40-38	1.50 (38.1)	3800 (262.0)	.0217 (.0821)	21.7 (82.1)	26.1 (98.8)	30.5 (115.5)	38.1 (144.2)	39.2 (148.4)	Flows: 21 – 39 gpm (79.5 – 147.6 lpm) psi: 2800 – 3800 (bar: 163.1 – 262.0) Stroke Length: 3.75 in. (95.25 mm) Weight: 725 lbs. (328.9 kg)	Max. HP 102 (76.1 kW)
	HP (Kilowatts) required @ RPM**			56.5 (42.1)	68.0 (50.7)	79.5 (59.3)	99.4 (74.1)	102.0 (76.1)		
DP55-28	1.75 (44.45)	2800 (193.1)	.0296 (.1120)	29.6 (112.0)	35.5 (134.4)	41.4 (156.7)	51.8 (196.1)	53.3 (201.8)	Flows: 29 – 53 gpm (109.8 – 200.6 lpm) psi: 1800 – 2800 (bar: 124.1 – 163.1) Stroke Length: 3.75 in. (95.25 mm) Weight: 725 lbs. (328.9 kg)	Max. HP 102 (76.1 kW)
	HP (Kilowatts) required @ RPM**			56.8 (42.4)	67.8 (50.6)	79.5 (59.3)	99.5 (74.2)	102.0 (76.1)		
DP70-22	2.00 (50.8)	2150 (148.2)	.0387 (.1465)	38.7 (146.5)	46.4 (175.6)	54.2 (205.2)	67.7 (256.3)	69.7 (263.8)	Flows: 38-69 gpm (143.8-261.2 lpm) psi: 1150 – 2150 (bar: 79.3 – 148.2) Stroke Length: 3.75 in. (95.25 mm) Weight: 725 lbs. (328.9 kg)	Max. HP 102 (76.1 kW)
	HP (Kilowatts) required @ RPM**			57.1 (42.6)	68.4 (51.0)	79.9 (59.6)	99.9 (74.5)	102.0 (76.1)		
DP80-20	2.125 (53.975)	1900 (131.0)	.0437 (.1654)	43.7 (165.4)	52.4 (198.4)	61.2 (231.7)	76.5 (289.6)	78.7 (297.9)	Flows: 43 – 78 gpm (162.8 – 295.3 lpm) psi: 900 – 1900 (bar: 62.1 – 131.0) Stroke Length: 3.75 in. (95.25 mm) Weight: 725 lbs. (328.9 kg)	Max. HP 102 (76.1 kW)
	HP (Kilowatts) required @ RPM**			56.9 (42.4)	68.3 (50.9)	79.8 (59.5)	99.7 (74.3)	102.0 (76.1)		
DP90-18	2.25 (57.15)	1700 (117.2)	.0490 (.1855)	49.0 (185.5)	58.8 (222.6)	68.6 (259.7)	85.7 (324.4)	82.2 (333.9)	Flows: 49 – 88 gpm (185.5 – 333.1 lpm) psi: 700 – 1700 (bar: 27.6 – 96.5) Stroke Length: 3.75 in. (95.25 mm) Weight: 725 lbs. (328.9 kg)	Max. HP 102 (76.1 kW)
	HP (Kilowatts) required @ RPM**			57.1 (42.6)	68.6 (51.2)	80.0 (59.7)	99.9 (74.5)	102.0 (76.1)		
DP120-12	2.625 (66.675)	1200 (82.7)	.0667 (.2525)	66.7 (252.5)	80.0 (302.8)	93.4 (353.6)	116.7 (441.8)	120.1 (454.6)	Flows: 66 – 120 gpm (249.8 – 454.2 lpm) psi: 200 – 1200 (bar: 13.8 – 82.7) Stroke Length: 3.75 in. (95.25 mm) Weight: 725 lbs. (328.9 kg)	Max. HP 102 (76.1 kW)
	HP (Kilowatts) required @ RPM**			54.9 (40.9)	65.8 (49.1)	89.7 (66.9)	96.1 (71.7)	102.0 (76.1)		

Metallurgy is available in Ductile Iron
 DP Series have an internal gear reduction of 3.95:1

* Displacement based on 100% volumetric efficiency
 ** Power based on 85% mechanical efficiency

E Series

Gearcase of rugged cast iron protects the gears and serves as oil reservoir for continuous splash lubrication. Pinion and gear are helical cut and machined from high-strength alloy steel, and can rotate in either direction. Valves are abrasion resistant for dependable service in the harshest environments.



E Series Pump Features

- Flows to 110 gpm (416.4 lpm)
- Pressure ratings up to 3,000 psi (206.8 bar)
- Easily serviced in field without removal of pump
- Abrasion resistant valve assemblies
- Internal gear reductions of 3.95 to 1

E54-30	Piston	Max. psi (bar)	*Gallon (Liter) Per/Rev	1012 RPM US gpm (lpm)	1215 RPM US gpm (lpm)	1417 RPM US gpm (lpm)	1620 RPM US gpm (lpm)	1823 RPM US gpm (lpm)	Flows: 30 – 53 gpm (113.6 – 200.6 lpm) psi: 1800 – 3000 (bar: 124.1 – 206.8) Stroke Length: 3.75 in. (95.25 mm) Weight: 525 lbs. (238.1 kg)	Max. HP 110 (82 kW)
	1.75 (44.45)	3000 (206.8)	.0296 (.1120)	29.9 (113.2)	35.9 (135.9)	41.9 (158.6)	47.9 (181.3)	53.9 (204.0)		
	HP (Kilowatts) required @ RPM**			65.1 (48.5)	73.9 (55.1)	86.2 (64.3)	96.6 (72.0)	110 (82.0)		
E70-23	Piston Size in. (mm)	Max. psi (bar)	*Gallon (Liter) Per/Rev	774 RPM US gpm (lpm)	1032 RPM US gpm (lpm)	1290 RPM US gpm (lpm)	1549 RPM US gpm (lpm)	1807 RPM US gpm (lpm)	Flows: 30 – 70 gpm (113.6 – 265 lpm) psi: 1900 – 2300 (bar: 131 – 158.6) Stroke Length: 3.75 in. (95.25 mm) Weight: 525 lbs. (238.1 kg)	Max. HP 110 (82 kW)
	2.00 (50.8)	2300 (158.6)	.0387 (.1465)	29.9 (113.2)	39.9 (151)	49.9 (188.9)	59.9 (226.7)	69.9 (264.6)		
	HP (Kilowatts) required @ RPM**			47.1 (35.1)	62.9 (46.9)	78.7 (58.7)	94.5 (70.5)	110 (82.0)		
E80-20	Piston Size in. (mm)	Max. psi (bar)	*Gallon (Liter) Per/Rev	914 RPM US gpm (lpm)	1143 RPM US gpm (lpm)	1371 RPM US gpm (lpm)	1600 RPM US gpm (lpm)	1828 RPM US gpm (lpm)	Flows: 40 – 80 gpm (151.4 – 302.8 lpm) psi: 1200 – 2000 (bar: 82.7 – 137.9) Stroke Length: 3.75 in. (95.25 mm) Weight: 525 lbs. (238.1 kg)	Max. HP 110 (82 kW)
	2.125 (54.0)	2000 (137.9)	.0437 (.1654)	39.9 (151)	49.9 (188.9)	59.9 (226.7)	69.9 (264.6)	79.8 (302.0)		
	HP (Kilowatts) required @ RPM**			54.7 (40.8)	68.4 (51.0)	82.2 (61.3)	95.9 (71.5)	110 (82.0)		
E80-25	Piston Size in. (mm)	Max. psi (bar)	*Gallon (Liter) Per/Rev	1031 RPM US gpm (lpm)	1290 RPM US gpm (lpm)	1548 RPM US gpm (lpm)	1806 RPM US gpm (lpm)	2064 RPM US gpm (lpm)	Flows: 40 – 80 gpm (151.4 – 302.8 lpm) psi: 1200 – 2500 (bar: 82.7 – 172.4) Stroke Length: 3.75 in. (95.25 mm) Weight: 525 lbs. (238.1 kg)	Max. HP 137 (102.2 kW)
	2.00 (50.8)	2500 (172.4)	.0387 (.1465)	40.0 (151.0)	50.0 (189.3)	60 (227.1)	70 (265.0)	80 (302.8)		
	HP (Kilowatts) required @ RPM**			67.0 (50.0)	86.0 (64.1)	103 (76.8)	120 (89.5)	137 (102.2)		
E110-14	Piston Size in. (mm)	Max. psi (bar)	*Gallon (Liter) Per/Rev	1157 RPM US gpm (lpm)	1322 RPM US gpm (lpm)	1487 RPM US gpm (lpm)	1652 RPM US gpm (lpm)	1817 RPM US gpm (lpm)	Flows: 70 – 109 gpm (265 – 412.6 lpm) psi: 800 – 1400 (bar: 55.2 – 96.5) Stroke Length: 3.75 in. (95.25 mm) Weight: 525 lbs. (238.1 kg)	Max. HP 110 (82 kW)
	2.5 (63.5)	1477 (101.8)	.0605 (.2290)	69.9 (264.6)	79.9 (302.5)	89.9 (340.3)	99.9 (378.2)	109.9 (416.0)		
	HP (Kilowatts) required @ RPM**			67.1 (50.0)	76.7 (57.2)	86.3 (64.4)	95.9 (71.5)	110 (82.0)		

Metallurgy available in Ductile Iron only

*E Series have an internal gear reduction of 3.95:1

* Displacement based on 100% volumetric efficiency

** Power based on 85% mechanical efficiency

PENTAIR MYERS APLEX SERIES

Field-Proven Reliability Features

A. Valves

Unique (patented) hardened stainless steel disc-type valves for longer life cycle and servicing. Additional valve types are: acetal disc, titanium disc, abrasion resistant, and dual-stem guided.

B. Plungers

Rokide™ chrome-oxide coated on stainless steel substrate or TX for abrasive service.

C. Stuffing Boxes

Replaceable and field-servicable – available in various metallurgies.

D. Liquid Ends

Available in a variety of metallurgies.

E. Valve Covers

Provide easy access to valve components.

F. Crosshead Extension Rods

Solid heat-treated stainless steel for hardness and corrosion-resistance.

G. Packing Assemblies

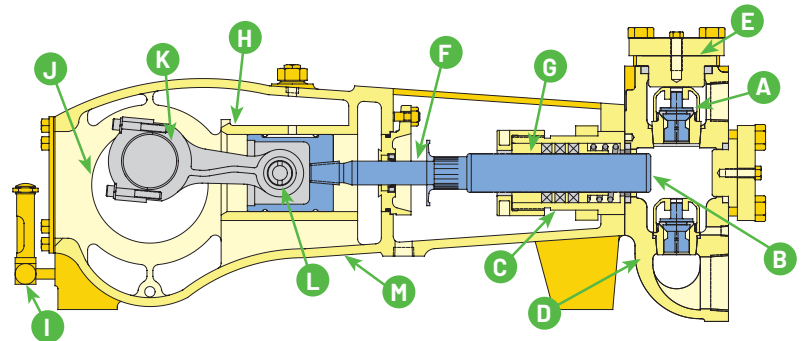
Available in a wide selection of styles to meet your specific needs.

H. Power-End Lubrication Systems

A combination of splash and scoop methods to deliver proper lubrication of the power-end at a wide range of pump speeds.

I. Oil Level Sight Glass

Provides quick and easy oil level inspection.



J. Crankshaft Journal Bearings

Precision steel backed, babbitted inserts require no shimming of the rod cap for perfect running clearance.

K. Crankshafts

Forged steel or ductile iron, precision ground and polished for low friction and supported by large roller bearings.

L. Connecting Rods

Utilizing case-hardened and centerless-ground alloy steel crosshead pins and large leaded bronze bushings. Provide an excellent design to cope with applications involving high suction pressures.

M. Power Frame Cradle

Unobstructed access for easy entry and servicing of plungers, packing, and stuffing boxes.

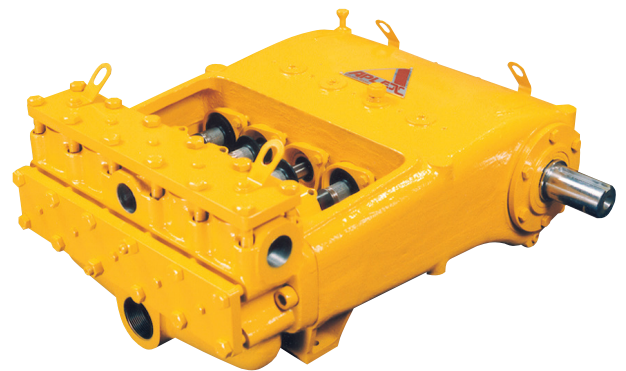
API 674

Reciprocating Pumps

Pentair Myers® Aplex Series compliant reciprocating pumps provide high pressure transfer of fluids with high efficiency.

Features:

- High efficiency
- Designed for quick and easy maintenance of all expendables
- Pump can be completely disassembled without removing the piping or driver
- Easy valve replacement
- Optional materials customize pumps to specific application for longevity

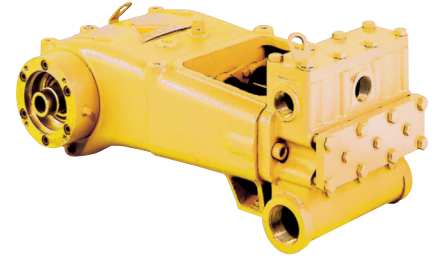


Designed to meet the intent of American Petroleum Institute standards, Pentair manufactures high quality, reliable products applicable for API 674 services. Years of field proven performance with our reciprocating pumps provide the industry with some of the best pumps available.

Engineered to match performance needs and operating conditions, you can be assured your Pentair pump will be the right fit for the job, every time.

SC Series

Built for "intermittent duty" at full ratings for shift type of work, i.e. eight hours per day. This pump line offers the same design features as the MA Series in a smaller more compact and cost-effective design for this type of work and follows Hydraulic Institute Standards.



SC Series features

- Flows up to 288.5 gpm (2606.3 lpm)
- Pressure ratings up to 6,500 psi (448 bar)
- Power ratings to 500 HP (373 kW)
- Temperatures to 400° F (204° C)
- Metallurgies available are ductile iron, aluminum bronze, carbon steel, or stainless steel

SC Series Sizing Charts

	Plunger Size in. (mm)	Max. psi (bar)	*Gallon (Liter) Per/Rev	250 RPM US gpm (lpm)	350 RPM US gpm (lpm)	450 RPM US gpm (lpm)	550 RPM US gpm (lpm)	650 RPM US gpm (lpm)		
Piston Only → SC-30 Triplex	1.750 (44.450)	1743 (120.2)	.0547 (.2071)	13.7 (51.9)	19.1 (72.3)	24.6 (93.1)	30.1 (114.0)	35.5 (134.4)	Flows: 7 - 35 gpm (26.5 - 132.5 lpm) psi: 1743 - 3417 (bar: 120.2 - 235.6) Stroke Length: 1.75 in. (44.45 mm) Weight: 225 lbs. (102.1 kg)	Max. HP 40 (29.8 kW)
	1.625 (41.275)	2022 (139.4)	.0471 (.1783)	11.8 (44.7)	16.5 (62.5)	21.2 (80.1)	25.9 (98.0)	30.6 (115.8)		
	1.500 (38.100)	2373 (163.6)	.0402 (.1522)	10.0 (37.9)	14.1 (53.4)	18.1 (68.5)	22.1 (83.7)	26.1 (98.8)		
	1.375 (34.925)	2824 (194.7)	.0337 (.1276)	8.4 (31.8)	11.8 (44.7)	15.2 (57.5)	18.6 (70.4)	21.9 (82.9)		
	1.250 (31.750)	3417 (235.6)	.0279 (.1056)	7.0 (26.5)	9.8 (37.1)	12.6 (47.7)	15.3 (57.9)	18.1 (68.5)		
HP (Kilowatts) required @ RPM**				21.6 (16.1)	27.8 (20.7)	34.0 (25.4)	40.0 (29.8)			
SC-30H Triplex	1.125 (28.575)	4218 (290.8)	.0226 (.0856)	5.6 (21.2)	7.9 (30.0)	10.2 (38.6)	12.4 (46.9)	14.7 (55.6)	Flows: 3 - 14 gpm (11.4 - 53.0 lpm) psi: 4218 - 5000 (bar: 290.8 - 344.7) Stroke Length: 1.75 in. (44.45 mm) Weight: 275 lbs. (124.7 kg)	Max. HP 40 (29.8 kW)
	1.000 (25.400)	5000 (344.7)	.0179 (.0678)	4.5 (17.0)	6.2 (23.5)	8.0 (30.3)	9.8 (37.1)	11.6 (43.9)		
	.875 (22.225)	5000 (344.7)	.0137 (.0519)	3.4 (12.9)	4.8 (18.2)	6.1 (23.1)	7.5 (28.4)	8.9 (33.7)		
	HP (Kilowatts) required @ RPM**				15.4 (11.5)	21.6 (16.1)	27.8 (20.7)	34.0 (25.4)		
SC-35 Triplex	2.000 (50.8)	1528 (105.4)	.0816 (.3089)	16.3 (61.8)	26.5 (100.4)	34.7 (131.4)	42.8 (162.2)	51 (193.1)	Flows: 9.2 - 51 gpm (34.8-193.1 lpm) psi: 1000-2716 (bar: 69-187.3) Stroke Length 2.00 in. (50.8 mm) Weight: 250 lbs (113.4 kg)	Max. HP 50 (37 kW)
	1.750 (44.5)	1996 (137.6)	.0625 (.2366)	12.5 (47.3)	20.3 (76.9)	26.6 (100.6)	32.8 (124.2)	39.1 (147.9)		
	1.500 (38.1)	2716 (187.3)	.0459 (.1738)	9.2 (34.8)	14.9 (56.5)	19.5 (73.8)	24.1 (91.2)	28.7 (108.6)		
	HP (Kilowatts) required @ RPM**				16.2 (12.1)	26.3 (19.6)	34.4 (25.6)	42.5 (31.7)		
SC-45L Triplex	2.250 (57.150)	1330 (91.7)	.1162 (.4399)	23.2 (87.8)	34.9 (132.1)	46.5 (176.1)	58.1 (219.9)	69.7 (263.8)	Flows: 18 - 69 gpm (68.1 - 261.2 lpm) psi: 1330 - 1683 (bar: 91.7 - 116.0) Stroke Length: 2.25 in. (57.15 mm) Weight: 475 lbs. (215.5 kg)	Max. HP 60 (44.7 kW)
	2.125 (53.975)	1491 (102.8)	.1036 (.3922)	20.7 (78.4)	31.1 (117.7)	41.5 (157.1)	51.8 (196.1)	62.2 (235.5)		
	2.000 (50.800)	1683 (116.0)	.0918 (.3475)	18.4 (69.7)	27.5 (104.1)	36.7 (138.9)	45.9 (173.8)	55.1 (208.6)		
	HP (Kilowatts) required @ RPM**				20.0 (14.9)	30.1 (22.4)	40.1 (29.9)	50.1 (37.4)		
SC-45 Triplex	1.875 (47.625)	1912 (131.8)	.0807 (.3055)	16.1 (60.9)	24.2 (91.6)	32.3 (122.3)	40.3 (152.6)	48.4 (183.2)	Flows: 10 - 48 gpm (37.9 - 181.7 lpm) psi: 1912 - 2988 (bar: 131.8 - 206.0) Stroke Length: 2.25 in. (57.15 mm) Weight: 430 lbs. (195.0 kg)	Max. HP 60 (44.7 kW)
	1.750 (44.450)	2195 (151.3)	.0703 (.2661)	14.1 (53.4)	21.1 (79.9)	28.1 (106.4)	35.1 (132.9)	42.2 (159.7)		
	1.625 (41.275)	2546 (175.5)	.0606 (.2294)	12.1 (45.8)	18.2 (68.9)	24.2 (91.6)	30.3 (114.7)	36.4 (137.8)		
	1.500 (38.100)	2988 (206.0)	.0516 (.1953)	10.3 (39.0)	15.5 (58.7)	20.7 (78.4)	25.8 (97.7)	31.0 (117.3)		
	HP (Kilowatts) required @ RPM**				20.0 (14.9)	30.0 (22.4)	40.0 (29.8)	50.0 (37.3)		
SC-45H Triplex	1.375 (34.925)	3556 (245.2)	.0434 (.1643)	8.7 (32.9)	13.0 (49.2)	17.4 (65.9)	21.7 (82.1)	26.0 (98.4)	Flows: 5 - 26 gpm (18.9 - 98.4 lpm) psi: 3556 - 5000 (bar: 245.2 - 344.7) Stroke Length: 2.25 in. (57.15 mm) Weight: 430 lbs. (195.0 kg)	Max. HP 60 (44.7 kW)
	1.250 (31.750)	4302 (296.6)	.0359 (.1359)	7.2 (27.3)	10.8 (40.9)	14.3 (54.1)	17.9 (67.8)	21.5 (81.4)		
	1.125 (28.575)	5000 (344.7)	.0290 (.1098)	5.8 (22.0)	8.7 (32.9)	11.6 (43.9)	14.5 (54.9)	17.4 (65.9)		
	HP (Kilowatts) required @ RPM**				20.0 (14.9)	30.0 (22.4)	40.0 (29.8)	50.0 (37.3)		

*Displacement based on 100% volumetric efficiency

**Power based on 90% mechanical efficiency

SC Series Sizing Charts (Continued)

Piston Only →	SC-65L Triplex	Plunger Size in. (mm)	Max. psi (bar)	*Gallon (Liter) Per/Rev	200 RPM US gpm (lpm)	250 RPM US gpm (lpm)	350 RPM US gpm (lpm)	450 RPM US gpm (lpm)	550 RPM US gpm (lpm)	Flows: 28 – 116 gpm (106.0 – 439.1 lpm) psi: 1215 – 1815 (bar: 83.8 – 125.1) Stroke Length: 2.75 in. (69.85 mm) Weight: 750 lbs. (340.2 kg)	Max. HP 92 (68.6 kW)			
		3.000 (76.200)	1050 (72.4)	.2520 (.9539)	50.5 (191.2)	63.1 (238.9)	88.3 (334.3)	113.6 (430.0)	138.8 (525.4)					
		2.750 (69.850)	1215 (83.8)	.2121 (.8029)	42.4 (160.5)	53.0 (200.6)	74.2 (280.9)	95.5 (361.5)	116.7 (441.8)					
		2.625 (66.675)	1334 (92.0)	.1933 (.7317)	38.7 (146.5)	48.3 (182.8)	67.6 (255.9)	87.0 (329.3)	106.3 (402.4)					
		2.500 (63.500)	1471 (101.4)	.1753 (.6636)	35.1 (132.9)	43.8 (165.8)	61.4 (232.4)	78.9 (298.7)	96.4 (364.9)					
		2.375 (60.325)	1630 (112.4)	.1582 (.5989)	31.6 (119.6)	39.6 (149.9)	55.4 (209.7)	71.2 (269.5)	87.0 (329.3)					
		2.250 (57.150)	1815 (125.1)	.1420 (.5375)	28.4 (107.5)	35.5 (134.4)	49.7 (188.1)	63.9 (241.9)	78.1 (295.6)					
HP (Kilowatts) required @ RPM**				33.4 (24.9)	41.8 (31.2)	58.5 (43.6)	75.2 (56.1)	92.0 (68.6)						
	SC-65 Triplex	Plunger Size in. (mm)	Max. psi (bar)	*Gallon (Liter) Per/Rev	200 RPM US gpm (lpm)	250 RPM US gpm (lpm)	350 RPM US gpm (lpm)	450 RPM US gpm (lpm)	550 RPM US gpm (lpm)	Flows: 17 – 78 gpm (64.4 – 295.3 lpm) psi: 1815 – 3000 (bar: 125.1 – 206.8) Stroke Length: 2.75 in. (69.85 mm) Weight: 750 lbs. (340.2 kg)	Max. HP 92 (68.6 kW)			
		2.250 (57.150)	1815 (125.1)	.1420 (.5375)	28.4 (107.5)	35.5 (134.4)	49.7 (188.1)	63.9 (241.9)	78.1 (295.6)					
		2.125 (53.975)	2035 (140.3)	.1267 (.4796)	25.3 (95.8)	31.7 (120.0)	44.3 (167.7)	57.0 (215.8)	69.7 (263.8)					
		2.000 (50.800)	2297 (158.4)	.1122 (.4247)	22.4 (84.8)	28.1 (106.4)	39.3 (148.8)	50.5 (191.2)	61.7 (233.6)					
		1.875 (47.625)	2613 (180.2)	.0986 (.3732)	19.7 (74.6)	24.7 (93.5)	34.5 (130.6)	44.4 (168.1)	54.2 (205.2)					
		1.750 (44.450)	3000 (206.8)	.0859 (.3252)	17.2 (65.1)	21.5 (81.4)	30.1 (114.0)	38.7 (146.5)	47.2 (178.7)					
		HP (Kilowatts) required @ RPM**				33.4 (24.9)	41.8 (31.2)	58.5 (43.6)	75.2 (56.1)			92.0 (68.6)		
	SC-65H Triplex	Plunger Size in. (mm)	Max. psi (bar)	*Gallon (Liter) Per/Rev	200 RPM US gpm (lpm)	250 RPM US gpm (lpm)	350 RPM US gpm (lpm)	450 RPM US gpm (lpm)	550 RPM US gpm (lpm)	Flows: 8 – 40 gpm (30.3 – 151.4 lpm) psi: 3479 – 5000 (bar: 239.9 – 344.7) Stroke Length: 2.75 in. (69.85 mm) Weight: 795 lbs. (360.6 kg)	Max. HP 92 (68.6 kW)			
		1.625 (41.275)	3479 (239.9)	.0741 (.2805)	14.8 (56.0)	18.5 (70.0)	25.9 (98.0)	33.3 (126.1)	40.7 (154.1)					
		1.500 (38.100)	4083 (281.5)	.0631 (.2389)	12.6 (47.7)	15.8 (59.8)	22.1 (83.7)	28.4 (107.5)	34.7 (131.4)					
		1.375 (34.925)	4858 (335.0)	.0530 (.2006)	10.6 (40.1)	13.3 (50.3)	18.6 (70.4)	23.9 (90.5)	29.2 (110.5)					
		1.250 (31.750)	5000 (344.7)	.0438 (.1658)	8.8 (33.3)	11.0 (41.6)	15.3 (57.9)	19.7 (74.6)	24.1 (91.2)					
		HP (Kilowatts) required @ RPM**				33.4 (24.9)	41.8 (31.2)	58.5 (43.6)	75.2 (56.1)			92.0 (68.6)		
			SC-80 Quintuplex	Plunger Size in. (mm)	Max. psi (bar)	*Gallon (Liter) Per/Rev	200 RPM US gpm (lpm)	300 RPM US gpm (lpm)	400 RPM US gpm (lpm)			500 RPM US gpm (lpm)	600 RPM US gpm (lpm)	Flows: 17 – 80 gpm (64.4 – 302.8 lpm) psi: 1912 – 2988 (bar: 131.8 – 206.0) Stroke Length: 2.25 in. (57.15 mm) Weight: 510 lbs. (231.3 kg)
1.875 (47.625)	1912 (131.8)			.1345 (.5091)	26.9 (101.8)	40.3 (152.6)	53.8 (203.7)	67.2 (254.4)	80.7 (305.5)					
1.750 (44.450)	2195 (151.3)			.1171 (.4433)	23.4 (88.6)	35.1 (132.9)	46.9 (177.5)	58.6 (221.8)	70.3 (266.1)					
1.625 (41.275)	2550 (175.8)			.1010 (.3823)	20.2 (76.5)	30.3 (114.7)	40.4 (152.9)	50.5 (191.2)	60.6 (229.4)					
1.500 (38.100)	2988 (206.0)			.0861 (.3259)	17.2 (65.1)	25.8 (97.7)	34.4 (130.2)	43.0 (162.8)	51.6 (195.3)					
HP (Kilowatts) required @ RPM**				33.4 (24.9)	50.1 (37.4)	66.7 (49.7)	83.4 (62.2)	100.0 (74.6)						
	SC-80H Quintuplex			Plunger Size in. (mm)	Max. psi (bar)	*Gallon (Liter) Per/Rev	200 RPM US gpm (lpm)	300 RPM US gpm (lpm)	400 RPM US gpm (lpm)	500 RPM US gpm (lpm)	600 RPM US gpm (lpm)	Flows: 7 – 43 gpm (26.5 – 162.8 lpm) psi: 3558 – 6500 (bar: 245.3 – 448.2) Stroke Length: 2.25 in. (57.15 mm) Weight: 510 lbs. (231.3 kg)	Max. HP 100 (74.6 kW)	
		1.375 (34.925)	3558 (245.3)	.0723 (.2737)	14.5 (54.9)	21.7 (82.1)	28.9 (109.4)	36.2 (137.0)	43.4 (164.3)					
		1.250 (31.750)	4306 (296.9)	.0598 (.2264)	12.0 (45.4)	17.9 (67.8)	23.9 (90.5)	29.9 (113.2)	35.9 (135.9)					
		1.125 (28.575)	5316 (366.5)	.0484 (.1832)	9.7 (36.7)	14.5 (54.9)	19.4 (73.4)	24.2 (91.6)	29.0 (109.8)					
		1.000 (25.400)	6500 (448.2)	.0383 (.1450)	7.7 (29.1)	11.5 (43.5)	15.3 (57.9)	19.1 (72.3)	23.0 (87.1)					
		HP (Kilowatts) required @ RPM**				33.4 (24.9)	50.1 (37.4)	66.8 (49.8)	83.4 (62.2)	100.0 (74.6)				
			SC-95 Triplex	Plunger Size in. (mm)	Max. psi (bar)	*Gallon (Liter) Per/Rev	200 RPM US gpm (lpm)	250 RPM US gpm (lpm)	350 RPM US gpm (lpm)	450 RPM US gpm (lpm)	550 RPM US gpm (lpm)			Flows: 21 – 105 gpm (79.5 – 397.5 lpm) psi: 1936 – 3441 (bar: 133.5 – 237.2) Stroke Length: 3.00 in. (76.20 mm) Weight: 920 lbs. (417.3 kg)
2.500 (63.500)	1936 (133.5)			.1913 (.7241)	38.3 (150.0)	47.8 (181.0)	66.9 (253.2)	86.1 (325.9)	105.2 (398.2)					
2.375 (60.325)	2145 (147.9)			.1726 (.6534)	34.5 (130.6)	43.2 (163.5)	60.4 (228.6)	77.7 (294.1)	94.9 (359.2)					
2.250 (57.150)	2390 (164.8)			.1549 (.5864)	31.0 (117.3)	38.7 (146.5)	54.2 (205.2)	69.7 (263.8)	85.2 (322.5)					
2.125 (53.975)	2680 (184.8)			.1382 (.5231)	27.6 (104.5)	34.5 (130.6)	48.4 (183.2)	62.2 (235.5)	76.0 (287.7)					
2.000 (50.800)	3025 (208.6)			.1224 (.4633)	24.5 (92.7)	30.6 (115.8)	42.8 (162.0)	55.1 (208.6)	67.3 (254.8)					
1.875 (47.625)	3443 (237.4)			.1076 (.4073)	21.5 (81.4)	26.9 (101.8)	37.7 (142.7)	48.4 (183.2)	59.2 (224.1)					
HP (Kilowatts) required @ RPM**				48.0 (35.8)	60.0 (44.7)	84.0 (62.6)	108.1 (80.6)	132.0 (98.4)						
Piston Only →	SC-115L Quintuplex	Plunger Size in. (mm)	Max. psi (bar)	*Gallon (Liter) Per/Rev	200 RPM US gpm (lpm)	250 RPM US gpm (lpm)	350 RPM US gpm (lpm)	450 RPM US gpm (lpm)	550 RPM US gpm (lpm)	Flows: 47 – 231 gpm (177.9 – 874.4 lpm) psi: 1020 – 1815 (bar: 70.3 – 125.1) Stroke Length: 2.75 in. (69.85 mm) Weight: 1,520 lbs. (689.5 kg)	Max. HP 154 (114.8 kW)			
		3.000 (76.200)	1020 (70.3)	.4208 (1.5929)	84.2 (318.7)	105.2 (398.2)	147.3 (557.6)	189.3 (716.6)	231.4 (876.0)					
		2.750 (69.850)	1215 (83.8)	.3535 (1.3381)	70.7 (267.6)	88.4 (334.6)	123.7 (468.3)	159.1 (602.3)	194.5 (736.3)					
		2.625 (66.675)	1333 (91.9)	.3221 (1.2193)	64.4 (243.8)	80.5 (304.7)	112.7 (426.7)	145.0 (548.9)	177.2 (670.8)					
		2.500 (63.500)	1470 (101.4)	.2922 (1.1061)	58.4 (221.1)	73.0 (276.3)	102.3 (387.2)	131.5 (497.8)	160.7 (608.3)					
		2.375 (60.325)	1629 (112.3)	.2637 (.9982)	52.7 (199.5)	65.9 (249.5)	92.3 (349.4)	118.7 (449.3)	145.0 (548.9)					
		2.250 (57.150)	1815 (125.1)	.2367 (.8960)	47.3 (179.0)	59.2 (224.1)	82.8 (313.4)	106.5 (403.1)	130.2 (492.9)					
HP (Kilowatts) required @ RPM**				55.7 (41.5)	69.6 (51.9)	97.4 (72.6)	125.2 (93.4)	154.0 (114.8)						
	SC-115 Quintuplex	Plunger Size in. (mm)	Max. psi (bar)	*Gallon (Liter) Per/Rev	350 RPM US gpm (lpm)	400 RPM US gpm (lpm)	450 RPM US gpm (lpm)	500 RPM US gpm (lpm)	550 RPM US gpm (lpm)	Flows: 50 – 130 gpm (189.3 – 492.1 lpm) psi: 1815 – 3000 (bar: 125.1 – 206.8) Stroke Length: 2.75 in. (69.85 mm) Weight: 1,240 lbs. (562.5 kg)	Max. HP 154 (114.8 kW)			
		2.250 (57.150)	1815 (125.1)	.2367 (.8960)	82.8 (313.4)	94.7 (358.5)	106.5 (403.1)	118.3 (447.8)	130.2 (492.9)					
		2.125 (53.975)	2035 (140.3)	.2111 (.7991)	73.9 (279.7)	84.4 (319.5)	95.0 (359.6)	105.6 (399.7)	116.1 (439.5)					
		2.000 (50.800)	2297 (158.4)	.1870 (.7079)	65.5 (247.9)	74.8 (283.1)	84.2 (318.7)	93.5 (353.9)	102.9 (389.5)					
		1.875 (47.625)	2613 (180.2)	.1644 (.6223)	57.5 (217.7)	65.7 (248.7)	74.0 (280.1)	82.2 (311.2)	90.4 (342.2)					
		1.750 (44.450)	3000 (206.8)	.1432 (.5421)	50.1 (189.6)	57.3 (216.9)	64.4 (243.8)	71.6 (271.0)	78.7 (298.0)					
		HP (Kilowatts) required @ RPM**				97.5 (72.7)	111.4 (83.1)	125.4 (93.5)	139.3 (103.9)			154.0 (114.8)		

*Displacement based on 100% volumetric efficiency **Power based on 90% mechanical efficiency

SC Series Sizing Charts (Continued)

SC-115H Quintuplex	Plunger Size in. (mm)	Max. psi (bar)	*Gallon (Liter) Per/Rev	200 RPM US gpm (lpm)	300 RPM US gpm (lpm)	400 RPM US gpm (lpm)	500 RPM US gpm (lpm)	600 RPM US gpm (lpm)	Flows: 14 – 67 gpm (53.0 – 253.6 lpm) psi: 3479 – 5878 (bar: 239.9 – 405.3) Stroke Length: 2.75 in. (69.85 mm) Weight: 1,240 lbs. (562.5 kg)	Max. HP 154 (114.8 kW)
	1.625 (41.275)	3479 (239.9)	.1234 (.4671)	24.7 (93.5)	37.0 (140.1)	49.4 (187.0)	61.7 (233.6)	67.9 (257.0)		
	1.500 (38.100)	4083 (281.5)	.1052 (.3982)	21.0 (79.5)	31.6 (119.6)	42.1 (159.4)	52.6 (199.1)	57.9 (219.2)		
	1.375 (34.925)	4858 (335.0)	.0884 (.3346)	17.7 (67.0)	26.5 (100.3)	35.4 (134.0)	44.2 (167.3)	48.6 (184.0)		
	1.250 (31.750)	5878 (405.3)	.0730 (.2763)	14.6 (55.3)	21.9 (82.9)	29.2 (110.5)	36.5 (138.2)	40.2 (152.2)		
HP (Kilowatts) required @ RPM**				55.7 (41.5)	83.6 (62.3)	111.4 (83.1)	139.3 (103.9)	154.0 (114.8)		
Piston Only → SC-170L Triplex	Plunger Size in. (mm)	Max. psi (bar)	*Gallon (Liter) Per/Rev	250 RPM US gpm (lpm)	300 RPM US gpm (lpm)	350 RPM US gpm (lpm)	400 RPM US gpm (lpm)	450 RPM US gpm (lpm)	Flows: 105 – 312 gpm (397.5 – 1181.0 lpm) psi: 1136 – 1862 (bar: 78.3 – 128.4) Stroke Length: 4.25 in. (107.95 mm) Weight: 2,050 lbs. (929.9 kg)	Max. HP 230 (171.5 kW)
	4.000 (101.600)	1136 (78.3)	.6936 (2.6256)	173.4 (656.4)	208.1 (787.7)	242.8 (919.1)	277.0 (1048.6)	312.1 (1181.4)		
	3.500 (88.900)	1484 (102.3)	.5310 (2.0101)	132.8 (502.7)	159.3 (603.0)	185.9 (703.7)	212.4 (804.0)	239.0 (904.7)		
	3.375 (85.725)	1596 (110.0)	.4938 (1.8692)	123.4 (467.1)	148.1 (560.6)	172.8 (654.1)	197.5 (747.6)	222.2 (841.1)		
	3.250 (82.550)	1721 (118.7)	.4579 (1.7333)	114.5 (433.4)	137.4 (520.1)	160.3 (606.8)	183.2 (693.5)	206.0 (779.8)		
HP (Kilowatts) required @ RPM**				127.7 (95.2)	153.3 (114.3)	178.8 (133.3)	204.4 (152.4)	230.0 (171.5)		
SC-170 Triplex	Plunger Size in. (mm)	Max. psi (bar)	*Gallon (Liter) Per/Rev	250 RPM US gpm (lpm)	300 RPM US gpm (lpm)	350 RPM US gpm (lpm)	400 RPM US gpm (lpm)	450 RPM US gpm (lpm)	Flows: 67 – 239 gpm (253.6 – 904.7 lpm) psi: 1484 – 2909 (bar: 102.3 – 200.6) Stroke Length: 4.25 in. (107.95 mm) Weight: 1,850 lbs. (839.1 kg)	Max. HP 230 (171.5 kW)
	3.500 (88.900)	1484 (102.3)	.5310 (2.0101)	132.8 (502.7)	159.3 (603.0)	185.9 (703.7)	212.4 (804.0)	239.0 (904.7)		
	3.375 (85.725)	1596 (110.0)	.4938 (1.8692)	123.4 (467.1)	148.1 (560.6)	172.8 (654.1)	197.5 (747.6)	222.2 (841.1)		
	3.250 (82.550)	1721 (118.7)	.4579 (1.7333)	114.5 (433.4)	137.4 (520.1)	160.3 (606.8)	183.2 (693.5)	206.0 (779.8)		
	3.125 (79.375)	1862 (128.4)	.4233 (1.6024)	105.8 (400.5)	127.0 (480.7)	148.2 (561.0)	169.3 (640.9)	190.5 (721.1)		
	3.000 (76.200)	2020 (139.3)	.3902 (1.4771)	97.5 (369.1)	117.0 (442.9)	136.6 (517.1)	156.1 (590.9)	175.6 (664.7)		
	2.875 (73.025)	2199 (151.6)	.3583 (1.3563)	89.6 (339.2)	107.5 (406.9)	125.4 (474.7)	143.3 (542.4)	161.2 (610.2)		
	2.750 (69.850)	2404 (165.7)	.3278 (1.2409)	82.0 (310.4)	98.4 (372.5)	114.7 (434.2)	131.1 (496.3)	147.5 (558.3)		
	2.625 (66.675)	2638 (181.9)	.2987 (1.1307)	74.7 (282.8)	89.6 (339.2)	104.5 (395.6)	119.5 (452.4)	134.4 (508.8)		
	2.500 (63.500)	2909 (200.6)	.2709 (1.0255)	67.7 (256.3)	81.3 (307.8)	94.8 (358.9)	108.4 (410.3)	121.9 (461.4)		
HP (Kilowatts) required @ RPM**				127.8 (95.3)	153.3 (114.3)	178.9 (133.4)	204.4 (152.4)	230.0 (171.5)		
SC-170H Triplex	Plunger Size in. (mm)	Max. psi (bar)	*Gallon (Liter) Per/Rev	250 RPM US gpm (lpm)	300 RPM US gpm (lpm)	350 RPM US gpm (lpm)	400 RPM US gpm (lpm)	450 RPM US gpm (lpm)	Flows: 33 – 110 gpm (124.9 – 416.4 lpm) psi: 3223 – 5600 (bar: 222.2 – 386.1) Stroke Length: 4.25 in. (107.95 mm) Weight: 1,850 lbs. (839.1 kg)	Max. HP 230 (171.5 kW)
	2.375 (60.325)	3223 (222.2)	.2445 (.9255)	61.1 (231.3)	73.4 (277.8)	85.6 (324.0)	97.8 (370.2)	110.0 (416.4)		
	2.250 (57.150)	3592 (247.7)	.2195 (.8309)	54.9 (207.8)	65.8 (249.1)	76.8 (290.7)	87.8 (332.4)	98.8 (374.0)		
	2.125 (53.975)	4027 (277.7)	.1958 (.7412)	48.9 (185.1)	58.7 (222.2)	68.5 (259.3)	78.3 (296.4)	88.1 (333.5)		
	2.000 (50.800)	4548 (313.6)	.1734 (.6564)	43.4 (164.3)	52.0 (196.8)	60.7 (229.8)	69.4 (262.7)	78.0 (295.3)		
HP (Kilowatts) required @ RPM**				127.8 (95.3)	153.3 (114.3)	178.9 (133.4)	204.4 (152.4)	230.0 (171.5)		
Piston Only → SC-170DD Triplex	Plunger Size in. (mm)	Max. psi (bar)	*Gallon (Liter) Per/Rev	100 RPM US gpm (lpm)	200 RPM US gpm (lpm)	300 RPM US gpm (lpm)	400 RPM US gpm (lpm)	450 RPM US gpm (lpm)	Flows: 69 – 395 gpm (261.2 – 1495.2 lpm) psi: 900 – 1136 (bar: 62.1 – 78.3) Stroke Length: 4.25 in. (107.95 mm) Weight: 2,325 lbs. (1,054.6 kg)	Max. HP 230 (171.5 kW)
	4.500 (114.300)	900 (62.1)	.8778 (3.3223)	87.8 (332.4)	175.6 (664.7)	263.3 (996.7)	351.1 (1329.1)	395.0 (1495.2)		
	4.250 (107.950)	1000 (68.9)	.7830 (2.9640)	78.3 (296.4)	156.6 (592.8)	234.9 (899.2)	313.2 (1185.6)	352.4 (1334.0)		
	4.000 (101.600)	1136 (78.3)	.6936 (2.6256)	69.4 (262.7)	138.7 (525.0)	208.1 (787.7)	277.4 (1050.1)	312.1 (1181.4)		
HP (Kilowatts) required @ RPM**				51.2 (38.2)	102.5 (76.4)	153.7 (114.6)	204.9 (152.8)	230.0 (171.5)		
Piston Only → Piston Only → SC-230 Triplex	Plunger Size in. (mm)	Max. psi (bar)	*Gallon (Liter) Per/Rev	250 RPM US gpm (lpm)	300 RPM US gpm (lpm)	350 RPM US gpm (lpm)	400 RPM US gpm (lpm)	450 RPM US gpm (lpm)	Flows: 86 – 418 gpm (325.5 – 1582.3 lpm) psi: 1152 – 3084 (bar: 79.4 – 212.6) Stroke Length: 4.50 in. (114.30 mm) Weight: 2,680 lbs. (1,215.6 kg)	Max. HP 310 (231.2 kW)
	4.500 (114.300)	1152 (79.4)	.9295 (3.5185)	232.4 (879.7)	278.8 (1055.4)	325.3 (1231.4)	371.8 (1407.4)	418.3 (1583.4)		
	4.250 (107.950)	1291 (89.0)	.8291 (3.1385)	207.3 (784.7)	248.7 (941.4)	290.2 (1098.5)	331.6 (1255.2)	373.1 (1412.3)		
	4.000 (101.600)	1458 (100.5)	.7344 (2.7800)	183.6 (695.0)	220.3 (833.9)	257.0 (972.9)	293.8 (1112.2)	330.5 (1251.1)		
	3.875 (98.425)	1553 (107.1)	.6892 (2.6089)	172.3 (652.2)	206.8 (780.9)	241.2 (913.0)	275.7 (1043.6)	310.1 (1173.9)		
	3.750 (95.250)	1659 (114.4)	.6455 (2.4435)	161.4 (611.0)	193.6 (732.9)	225.9 (855.1)	258.2 (977.4)	290.5 (1100.0)		
	3.625 (92.075)	1775 (122.4)	.6032 (2.2834)	150.8 (570.8)	180.9 (684.8)	211.1 (799.1)	241.3 (913.4)	271.4 (1027.4)		
	3.500 (88.900)	1904 (131.3)	.5623 (2.1285)	140.6 (532.2)	168.7 (638.6)	196.8 (745.0)	224.9 (851.3)	253.0 (957.7)		
	3.375 (85.725)	2048 (141.2)	.5228 (1.9790)	130.7 (494.8)	156.8 (593.6)	183.0 (692.7)	209.1 (791.5)	235.3 (890.7)		
	3.250 (82.550)	2208 (152.2)	.4848 (1.8352)	121.2 (458.8)	145.4 (550.4)	169.7 (642.4)	193.9 (734.0)	218.2 (826.0)		
	3.125 (79.375)	2388 (164.6)	.4482 (1.6966)	112.1 (424.3)	134.5 (509.1)	156.9 (593.9)	179.3 (678.7)	201.7 (763.5)		
	3.000 (76.200)	2591 (178.6)	.4131 (1.5638)	103.3 (391.0)	123.9 (469.0)	144.6 (547.4)	165.2 (625.4)	185.9 (703.7)		
	2.875 (73.025)	2821 (194.5)	.3794 (1.4362)	94.8 (358.9)	113.8 (430.8)	132.8 (502.7)	151.8 (574.6)	170.7 (646.2)		
2.750 (69.850)	3084 (212.6)	.3471 (1.3139)	86.8 (328.6)	104.1 (394.1)	121.5 (459.9)	138.8 (525.4)	156.2 (591.3)			
HP (Kilowatts) required @ RPM**				173.6 (129.5)	208.3 (155.3)	243.0 (181.2)	277.8 (207.2)	310.0 (231.2)		

*Displacement based on 100% volumetric efficiency

**Power based on 90% mechanical efficiency

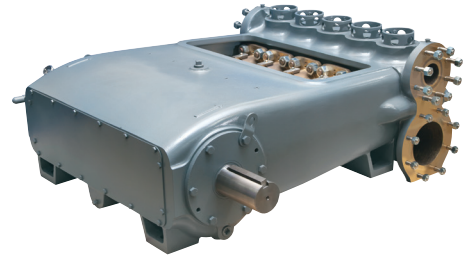
SC Series Sizing Charts (Continued)

SC-230H Triplex	Plunger Size in. (mm)	Max. psi (bar)	*Gallon (Liter) Per/Rev	250 RPM US gpm (lpm)	300 RPM US gpm (lpm)	350 RPM US gpm (lpm)	400 RPM US gpm (lpm)	450 RPM US gpm (lpm)	Flows: 45 – 129 gpm (170.3 – 488.3 lpm) psi: 3732 – 5831 (bar: 257.3 – 402.0) Stroke Length: 4.50 in. (114.30 mm) Weight: 2,935 lbs. (1,331.3 kg)	Max. HP 310 (231.2 kW)
	2.500 (63.500)	3732 (257.3)	.2869 (1.0860)	71.7 (271.4)	86.1 (325.9)	100.4 (380.1)	114.8 (548.1)	129.1 (488.7)		
	2.375 (60.325)	4135 (285.1)	.2589 (.9800)	64.7 (244.9)	77.7 (294.1)	90.6 (343.0)	103.6 (392.2)	116.5 (441.0)		
	2.250 (57.150)	4607 (317.6)	.2324 (.8797)	58.1 (220.0)	69.7 (263.8)	81.3 (307.8)	92.9 (351.7)	104.6 (396.0)		
	2.125 (53.975)	5165 (356.1)	.2073 (.7847)	51.8 (196.1)	62.2 (235.5)	72.5 (274.4)	82.9 (313.8)	93.3 (353.2)		
	2.000 (50.800)	5831 (402.0)	.1836 (.6950)	45.9 (173.8)	55.1 (208.6)	64.3 (243.4)	73.4 (277.8)	82.6 (312.7)		
HP (Kilowatts) required @ RPM**				173.6 (129.5)	208.3 (155.3)	243.0 (181.2)	277.7 (207.1)	310.0 (231.2)		
SC-300 Quintuplex	Plunger Size in. (mm)	Max. psi (bar)	*Gallon (Liter) Per/Rev	250 RPM US gpm (lpm)	300 RPM US gpm (lpm)	350 RPM US gpm (lpm)	400 RPM US gpm (lpm)	450 RPM US gpm (lpm)	Flows: 101 – 398 gpm (382.3 – 1506.6 lpm) psi: 1550 – 3365 (bar: 106.9 – 232.0) Stroke Length: 4.25 in. (107.95 mm) Weight: 3,600 lbs. (1,632.9 kg)	Max. HP 400 (298.3 kW)
	3.500 (88.900)	1550 (106.9)	.8851 (3.3505)	221.3 (837.7)	265.5 (1005.0)	309.8 (1172.7)	354.0 (1340.0)	398.3 (1507.7)		
	3.375 (85.725)	1666 (114.9)	.8230 (3.1154)	205.7 (778.7)	246.9 (934.6)	288.0 (1090.2)	329.2 (1246.2)	370.3 (1401.7)		
	3.250 (82.550)	1797 (123.9)	.7631 (2.8886)	190.8 (722.3)	228.9 (866.5)	267.1 (1011.1)	305.3 (1155.7)	343.4 (1299.9)		
	3.125 (79.375)	1944 (134.0)	.7056 (2.6710)	176.4 (667.7)	211.7 (801.4)	246.9 (934.6)	282.2 (1068.2)	317.5 (1201.9)		
	3.000 (76.200)	2109 (145.4)	.6503 (2.4617)	162.6 (615.5)	195.1 (738.5)	227.6 (861.6)	260.1 (984.6)	292.6 (1107.6)		
	2.875 (73.025)	2296 (158.3)	.5972 (2.2606)	149.3 (565.2)	179.2 (678.3)	209.0 (791.2)	238.9 (904.3)	268.7 (1017.1)		
	2.750 (69.850)	2510 (173.1)	.5464 (2.0683)	136.6 (517.1)	163.9 (620.4)	191.2 (723.8)	218.6 (827.5)	245.9 (930.8)		
	2.625 (66.675)	2755 (190.0)	.4978 (1.8844)	124.5 (471.3)	149.4 (565.5)	174.2 (659.4)	199.1 (753.7)	224.0 (847.9)		
	2.500 (63.500)	3037 (209.4)	.4516 (1.7095)	112.9 (427.4)	135.5 (512.9)	158.0 (598.1)	180.6 (683.6)	203.2 (769.2)		
2.375 (60.325)	3365 (232.0)	.4075 (1.5426)	101.9 (385.7)	122.3 (463.0)	142.6 (539.8)	163.0 (617.0)	183.4 (694.2)			
HP (Kilowatts) required @ RPM**				222.4 (165.8)	266.9 (199.0)	311.4 (232.2)	355.9 (265.4)	400.0 (298.3)		
Piston or Plunger SC-300L Quintuplex	Plunger Size in. (mm)	Max. psi (bar)	*Gallon (Liter) Per/Rev	200 RPM US gpm (lpm)	250 RPM US gpm (lpm)	300 RPM US gpm (lpm)	350 RPM US gpm (lpm)	400 RPM US gpm (lpm)	Flows: 189 – 585 gpm (715.4 – 2214.5 lpm) psi: 1055 – 1626 (bar: 72.7 – 112.1) Stroke Length: 4.25 in. (107.95 mm) Weight: 3,900 lbs. (1,769.0 kg)	Max. HP 400 (298.3 kW)
	4.500 (114.300)	1055 (72.7)	1.4631 (5.5384)	292.6 (1107.6)	365.8 (1394.7)	438.9 (1661.4)	512.1 (1938.5)	585.2 (2215.2)		
	4.375 (111.125)	1116 (76.9)	1.3829 (5.2348)	276.6 (1047.0)	345.7 (1308.6)	414.9 (1570.6)	484.0 (1832.1)	553.2 (2094.1)		
	4.250 (107.950)	1181 (81.4)	1.3050 (4.9400)	261.0 (988.0)	326.3 (1235.2)	391.5 (1482.0)	456.8 (1729.2)	522.0 (1976.0)		
	4.125 (104.775)	1254 (86.5)	1.2294 (4.6538)	245.9 (930.8)	307.3 (1163.3)	368.8 (1396.1)	430.3 (1628.9)	491.8 (1861.7)		
	4.000 (101.600)	1334 (92.0)	1.1560 (4.3759)	231.2 (875.2)	289.0 (1094.0)	346.8 (1312.8)	404.6 (1531.6)	462.4 (1750.4)		
	3.875 (98.425)	1422 (98.0)	1.0849 (4.1068)	217.0 (821.4)	271.2 (1026.6)	325.5 (1232.2)	379.7 (1437.3)	434.0 (1642.9)		
	3.750 (95.250)	1518 (104.7)	1.0160 (3.8460)	203.2 (769.2)	254.0 (961.5)	304.8 (1153.8)	355.6 (1346.1)	406.4 (1538.4)		
	3.625 (92.075)	1626 (112.1)	.9494 (3.5939)	189.9 (718.8)	237.4 (898.7)	284.8 (1078.1)	332.3 (1258.0)	379.8 (1437.7)		
	HP (Kilowatts) required @ RPM**				200.2 (149.3)	250.2 (186.6)	300.3 (223.9)	350.3 (261.2)		
SC-300H Quintuplex	Plunger Size in. (mm)	Max. psi (bar)	*Gallon (Liter) Per/Rev	250 RPM US gpm (lpm)	300 RPM US gpm (lpm)	350 RPM US gpm (lpm)	400 RPM US gpm (lpm)	450 RPM US gpm (lpm)	Flows: 45 – 129 gpm (170.3 – 488.3 lpm) psi: 4203 – 6198 (bar: 289.8 – 427.3) Stroke Length: 4.25 in. (107.95 mm) Weight: 3,240 lbs. (1,469.6 kg)	Max. HP 400 (298.3 kW)
	2.125 (53.975)	4203 (289.8)	.3263 (1.2352)	81.6 (308.9)	97.9 (370.6)	114.2 (432.3)	130.5 (494.0)	146.8 (555.7)		
	2.000 (50.800)	4745 (327.2)	.2890 (1.0940)	72.3 (273.7)	86.7 (328.2)	101.2 (383.1)	115.6 (437.6)	130.1 (492.5)		
	1.875 (47.625)	5399 (372.2)	.2540 (.9615)	63.5 (240.4)	76.2 (288.4)	88.9 (336.5)	101.6 (384.6)	114.3 (432.7)		
	1.750 (44.450)	6198 (427.3)	.2213 (.8377)	55.3 (209.3)	66.4 (251.4)	77.4 (293.0)	88.5 (335.0)	99.6 (377.0)		
HP (Kilowatts) required @ RPM**				222.3 (165.8)	266.8 (199.0)	311.2 (232.1)	355.7 (265.2)	400.0 (298.3)		
Piston Only Piston Only SC-400 Quintuplex	Plunger Size in. (mm)	Max. psi (bar)	*Gallon (Liter) Per/Rev	200 RPM US gpm (lpm)	250 RPM US gpm (lpm)	300 RPM US gpm (lpm)	350 RPM US gpm (lpm)	400 RPM US gpm (lpm)	Flows: 179.6 – 688.5 gpm (679.7 – 2606.3 lpm) psi: 1176 – 2148 (bar: 81.1 – 148.1) Stroke Length: 5.00 in. (127.00 mm) Weight: 5,050 lbs. (2,290.6 kg)	Max. HP 500 (373.0 kW)
	4.500 (114.3)	1176 (81.1)	1.721 (6.516)	344.3 (1303.1)	430.3 (1628.9)	516.4 (1954.7)	602.4 (2280.5)	688.5 (2606.3)		
	4.250 (108.0)	1319 (90.9)	1.535 (5.812)	307.1 (1162.4)	383.8 (1452.9)	460.6 (1743.5)	537.4 (2034.1)	614.1 (2324.7)		
	4.000 (101.6)	1418 (97.8)	1.360 (5.148)	272.0 (1029.6)	340.0 (1287.0)	408.0 (1544.4)	476.0 (1801.9)	544.0 (2059.3)		
	3.875 (98.4)	1511 (104.2)	1.276 (4.831)	255.3 (966.3)	319.1 (1207.9)	382.9 (1449.4)	446.7 (1691.0)	510.5 (1932.6)		
	3.750 (95.3)	1613 (111.2)	1.195 (4.525)	239.1 (904.9)	298.8 (1131.2)	358.6 (1357.4)	418.4 (1583.7)	478.1 (1809.9)		
	3.625 (92.1)	1727 (119.1)	1.117 (4.228)	223.4 (845.6)	279.2 (1057.0)	335.1 (1268.4)	390.9 (1479.8)	446.8 (1691.2)		
	3.500 (88.9)	1852 (127.7)	1.041 (3.942)	208.3 (788.3)	260.3 (985.4)	312.4 (1182.5)	364.4 (1379.5)	416.5 (1576.6)		
	3.375 (85.7)	1992 (137.3)	0.968 (3.665)	193.6 (733.0)	242.1 (916.3)	290.5 (1099.5)	338.9 (1282.8)	387.3 (1466.0)		
	3.250 (82.6)	2148 (148.1)	0.898 (3.399)	179.6 (679.7)	224.5 (849.6)	269.3 (1019.6)	314.2 (1189.5)	359.1 (1359.4)		
HP (Kilowatts) required @ RPM**				250.0 (186.0)	313.0 (233.0)	375.0 (280.0)	438.0 (327.0)	500.0 (373.0)		
SC-400H Quintuplex	Plunger Size in. (mm)	Max. psi (bar)	*Gallon (Liter) Per/Rev	200 RPM US gpm (lpm)	250 RPM US gpm (lpm)	300 RPM US gpm (lpm)	350 RPM US gpm (lpm)	400 RPM US gpm (lpm)	Flows: 68–360 gpm (257.4 – 1158.3 lpm) psi: 1000–5672 (bar: 69–391.1) Stroke Length: 5.00 in. (127.0 mm) Weight: 5000 lbs (2268.0 kg)	Max. HP 500 (373 kW)
	3.000 (76.2)	2521 (173.8)	.7650 (2.8958)	153.0 (579.2)	191.3 (724.1)	229.5 (868.8)	267.8 (1013.7)	306.0 (1158.3)		
	2.750 (69.8)	3000 (206.8)	.6428 (2.4333)	128.6 (486.8)	160.7 (608.3)	192.8 (729.8)	225.0 (851.7)	257.4 (973.2)		
	2.500 (63.5)	3630 (250.3)	.5313 (2.0112)	106.3 (402.4)	132.8 (502.7)	159.4 (603.4)	185.9 (703.7)	212.5 (804.4)		
	2.375 (60.3)	4022 (277.3)	.4795 (1.8151)	95.9 (363.0)	119.9 (453.9)	143.8 (544.3)	167.8 (635.2)	191.8 (726.0)		
	2.250 (57.2)	4481 (309.0)	.4303 (1.6289)	86.1 (325.9)	107.6 (407.3)	129.1 (488.7)	150.6 (570.1)	172.1 (651.5)		
	2.125 (54.0)	5024 (346.4)	.3838 (1.4528)	76.8 (290.7)	96.0 (363.4)	115.1 (435.7)	134.3 (508.4)	153.5 (581.1)		
2.000 (50.8)	5672 (391.1)	.3400 (1.2870)	68.0 (257.4)	85.0 (321.8)	102.0 (386.1)	119.0 (450.5)	136.0 (514.8)			
HP (Kilowatts) required @ RPM**				250.1 (186.5)	312.8 (233.3)	375.2 (279.8)	437.8 (326.5)	500.3 (373.1)		

*Displacement based on 100% volumetric efficiency **Power based on 90% mechanical efficiency

MA Series

Built for heavy, continuous duty 24-hours per day, 365 days per year application. Designed to handle the toughest applications. Available in configurations to comply with the Hydraulic Institute standards as well as API674 Standards.



MA Series Features

- Flows up to 650 gpm (2461 lpm)
- Pressure ratings up to 5,000 psi (345 bar)
- Power ratings to 300 HP (224 kW)
- Temperatures to 400° F (204° C)
- Metallurgies available are Ductile Iron, Aluminum Bronze, Carbon Steels and a variety of Stainless Steel

MA Series Sizing Charts

	Plunger Size in. (mm)	Max. psi (bar)	*Gallon (Liter) Per/Rev	250 RPM US gpm (lpm)	350 RPM US gpm (lpm)	450 RPM US gpm (lpm)	550 RPM US gpm (lpm)	650 RPM US gpm (lpm)			
MA-15M Triplex	1.625 (41.275)	881 (60.7)	.0404 (.1529)	10.1 (38.2)	14.1 (53.4)	18.2 (68.9)	22.2 (84.0)	26.3 (99.6)	Flows: 2 - 26 gpm (7.6 - 98.4 lpm) psi: 881 - 3040 (bar: 60.7 - 209.6) Stroke Length: 1.50 in. (38.10 mm) Weight: 235 lbs. (106.6 kg)	Max. HP 15 (11.2 kW)	
	1.500 (38.100)	1034 (71.3)	.0344 (.1302)	8.6 (32.6)	12.0 (45.4)	15.5 (58.7)	18.9 (71.5)	22.4 (84.8)			
	1.375 (34.925)	1231 (84.9)	.0289 (.1094)	7.2 (27.3)	10.1 (38.2)	13.0 (49.2)	15.9 (60.2)	18.8 (71.2)			
	1.250 (31.750)	1489 (102.7)	.0239 (.0905)	6.0 (22.7)	8.4 (31.8)	10.8 (40.9)	13.1 (49.6)	15.5 (58.7)			
	1.125 (28.575)	1839 (126.8)	.0194 (.0734)	4.8 (18.2)	6.8 (25.7)	8.7 (32.9)	10.7 (40.5)	12.6 (47.7)			
	1.000 (25.400)	2327 (160.4)	.0153 (.0579)	3.8 (14.4)	5.4 (20.4)	6.9 (26.1)	8.4 (31.8)	9.9 (37.5)			
	.875 (22.225)	3040 (209.6)	.0117 (.0443)	2.9 (11.0)	4.1 (15.5)	5.3 (20.1)	6.4 (24.2)	7.6 (28.8)			
HP (Kilowatts) required @ RPM**				5.8 (4.3)	8.1 (6.0)	10.4 (7.8)	12.7 (9.5)	15.0 (11.2)			
MA-15H Triplex	.750 (19.050)	5000 (344.7)	.0086 (.0326)	2.2 (8.3)	3.0 (11.4)	3.9 (14.8)	4.7 (17.8)	5.6 (21.2)	Flows: 2 - 5 gpm (7.6 - 18.9 lpm) psi: 5000 (bar: 344.7) Stroke Length: 1.50 in. (38.10 mm) Weight: 225 lbs. (102.1 kg)	Max. HP 18 (13.4 kW)	
	HP (Kilowatts) required @ RPM**				7.0 (5.2)	9.8 (7.3)	12.6 (9.4)	15.3 (11.4)			18.0 (13.4)

	Plunger Size in. (mm)	Max. psi (bar)	*Gallon (Liter) Per/Rev	200 RPM US gpm (lpm)	300 RPM US gpm (lpm)	400 RPM US gpm (lpm)	500 RPM US gpm (lpm)	600 RPM US gpm (lpm)		
MA-25L Triplex	2.250 (57.150)	625 (43.1)	.1033 (.3910)	20.7 (78.4)	31.0 (117.3)	41.3 (156.3)	51.6 (195.3)	62.0 (234.7)	Flows: 16 - 62 gpm (60.6 - 234.7 lpm) psi: 625 - 789 (bar: 43.1 - 54.4) Stroke Length: 2.00 in. (50.80 mm) Weight: 455 lbs. (206.4 kg)	Max. HP 25 (18.6 kW)
	2.125 (53.975)	700 (48.3)	.0921 (.3486)	18.4 (69.7)	27.6 (104.5)	36.8 (139.3)	46.1 (174.5)	55.3 (209.3)		
	2.000 (50.800)	789 (54.4)	.0816 (.3089)	16.3 (61.7)	24.5 (92.7)	32.6 (123.4)	40.8 (154.4)	49.0 (185.5)		
	HP (Kilowatts) required @ RPM**				8.4 (6.3)	12.6 (9.4)	16.7 (12.5)	20.9 (15.6)		

	Plunger Size in. (mm)	Max. psi (bar)	*Gallon (Liter) Per/Rev	200 RPM US gpm (lpm)	300 RPM US gpm (lpm)	400 RPM US gpm (lpm)	500 RPM US gpm (lpm)	600 RPM US gpm (lpm)		
MA-25M Triplex	1.875 (47.625)	896 (61.8)	.0717 (.2714)	14.3 (54.1)	21.5 (81.4)	28.7 (108.6)	35.9 (135.9)	43.0 (162.8)	Flows: 4 - 43 gpm (15.1 - 162.8 lpm) psi: 896 - 3151 (bar: 61.8 - 217.3) Stroke Length: 2.00 in. (50.80 mm) Weight: 430 lbs. (195.0 kg)	Max. HP 25 (18.6 kW)
	1.750 (44.450)	1028 (70.9)	.0625 (.2366)	12.5 (47.3)	18.7 (70.8)	25.0 (94.6)	31.2 (118.1)	37.5 (142.0)		
	1.625 (41.275)	1193 (82.3)	.0539 (.2040)	10.8 (40.9)	16.2 (61.3)	21.5 (81.4)	26.9 (101.8)	32.3 (122.3)		
	1.500 (38.100)	1400 (96.5)	.0459 (.1738)	9.2 (34.8)	13.8 (52.2)	18.4 (69.7)	23.0 (87.1)	27.5 (104.1)		
	1.375 (34.925)	1666 (114.9)	.0386 (.1461)	7.7 (29.1)	11.6 (43.9)	15.4 (58.3)	19.3 (73.1)	23.1 (87.4)		
	1.250 (31.750)	2016 (139.0)	.0319 (.1208)	6.4 (24.2)	9.6 (36.3)	12.8 (48.5)	15.9 (60.2)	19.1 (72.3)		
	1.125 (28.575)	2490 (171.7)	.0258 (.0977)	5.2 (19.7)	7.7 (29.1)	10.3 (39.0)	12.9 (48.8)	15.5 (58.7)		
	1.000 (25.400)	3151 (217.3)	.0204 (.0772)	4.1 (15.5)	6.1 (23.1)	8.2 (31.0)	10.2 (38.6)	12.2 (46.2)		
HP (Kilowatts) required @ RPM**				8.3 (6.2)	12.5 (9.3)	16.7 (12.5)	20.8 (15.5)	25.0 (18.6)		

	Plunger Size in. (mm)	Max. psi (bar)	*Gallon (Liter) Per/Rev	200 RPM US gpm (lpm)	300 RPM US gpm (lpm)	400 RPM US gpm (lpm)	500 RPM US gpm (lpm)	600 RPM US gpm (lpm)		
MA-25H Triplex	.875 (22.225)	4145 (285.8)	.0156 (.0591)	3.1 (11.7)	4.7 (17.8)	6.2 (23.5)	7.8 (29.5)	9.4 (35.6)	Flows: 2 - 9 gpm (7.6 - 34.1 lpm) psi: 4145 - 5000 (bar: 285.8 - 344.7) Stroke Length: 2.00 in. (50.80 mm) Weight: 455 lbs. (206.4 kg)	Max. HP 25 (18.6 kW)
	.750 (19.050)	5000 (344.7)	.0115 (.0435)	2.3 (8.7)	3.4 (12.9)	4.6 (17.4)	5.7 (21.6)	6.9 (26.1)		
	HP (Kilowatts) required @ RPM**				8.3 (6.2)	12.6 (9.4)	16.8 (12.5)	21.0 (15.7)		

*Displacement based on 100% volumetric efficiency

**Power based on 90% mechanical efficiency

MA Series Sizing Charts (Continued)

MA-40L Triplex	Plunger Size in. (mm)	Max. psi (bar)	*Gallon (Liter) Per/Rev	200 RPM US gpm (lpm)	250 RPM US gpm (lpm)	350 RPM US gpm (lpm)	450 RPM US gpm (lpm)	550 RPM US gpm (lpm)	Flows: 25 - 106 gpm (94.6 - 401.3 lpm) psi: 580 - 867 (bar: 40.0 - 59.8) Stroke Length: 2.50 in. (63.50 mm) Weight: 810 lbs. (367.4 kg)	Max. HP 40 (29.8 kW)
	2.750 (69.850)	580 (40.0)	.1928 (.7298)	38.6 (146.1)	48.2 (182.5)	67.5 (255.5)	86.8 (328.6)	106.1 (401.6)		
2.625 (66.675)	637 (43.9)	.1757 (.6651)	35.1 (132.9)	43.9 (166.2)	61.5 (232.8)	79.1 (299.4)	96.6 (365.7)			
2.500 (63.500)	703 (48.5)	.1594 (.6034)	31.9 (120.4)	39.8 (150.7)	55.8 (211.2)	71.7 (271.4)	87.7 (332.0)			
2.375 (60.325)	779 (53.7)	.1438 (.5443)	28.8 (109.0)	36.0 (136.3)	50.3 (190.4)	64.7 (244.9)	79.1 (299.4)			
2.250 (57.150)	867 (59.8)	.1291 (.4887)	25.8 (97.7)	32.3 (122.3)	45.2 (171.1)	58.1 (219.9)	71.0 (268.8)			
HP (Kilowatts) required @ RPM**				14.5 (10.8)	18.1 (13.5)	25.4 (18.9)	32.6 (24.3)	40.0 (29.8)		

MA-40M Triplex	Plunger Size in. (mm)	Max. psi (bar)	*Gallon (Liter) Per/Rev	200 RPM US gpm (lpm)	250 RPM US gpm (lpm)	350 RPM US gpm (lpm)	450 RPM US gpm (lpm)	550 RPM US gpm (lpm)	Flows: 6 - 71 gpm (22.7 - 268.8 lpm) psi: 867 - 3468 (bar: 59.8 - 239.1) Stroke Length: 2.50 in. (63.50 mm) Weight: 750 lbs. (340.2 kg)	Max. HP 40 (29.8 kW)
	2.250 (57.150)	867 (59.8)	.1291 (.4887)	25.8 (97.7)	32.3 (122.3)	45.2 (171.1)	58.1 (219.9)	71.0 (268.8)		
2.125 (53.975)	973 (67.1)	.1151 (.4357)	23.0 (87.1)	28.8 (109.0)	40.3 (152.3)	51.8 (196.1)	63.3 (239.6)			
2.000 (50.800)	1098 (75.7)	.1020 (.3861)	20.4 (77.2)	25.5 (96.5)	35.7 (135.1)	45.9 (173.8)	56.1 (212.4)			
1.875 (47.625)	1249 (86.1)	.0896 (.3392)	17.9 (67.8)	22.4 (84.8)	31.4 (118.9)	40.3 (152.6)	49.3 (186.6)			
1.750 (44.450)	1433 (98.8)	.0781 (.2956)	15.6 (59.1)	19.5 (73.8)	27.3 (103.3)	35.1 (132.9)	43.0 (162.8)			
1.625 (41.275)	1663 (114.7)	.0673 (.2548)	13.5 (51.1)	16.8 (63.6)	23.6 (89.3)	30.3 (114.7)	37.0 (140.1)			
1.500 (38.100)	1951 (134.5)	.0574 (.2173)	11.5 (43.5)	14.3 (54.1)	20.1 (76.1)	25.8 (97.7)	31.6 (119.6)			
1.375 (34.925)	2321 (160.0)	.0482 (.1825)	9.6 (36.3)	12.1 (45.8)	16.9 (64.0)	21.7 (82.1)	26.5 (100.3)			
1.250 (31.750)	2809 (193.7)	.0398 (.1507)	8.0 (30.3)	10.0 (37.9)	13.9 (52.6)	17.9 (67.8)	21.9 (82.9)			
1.125 (28.575)	3468 (239.1)	.0323 (.1223)	6.5 (24.6)	8.1 (30.7)	11.3 (42.8)	14.5 (54.9)	17.8 (67.4)			
HP (Kilowatts) required @ RPM**				14.5 (10.8)	18.1 (13.5)	25.4 (18.9)	32.7 (24.4)	40.0 (29.8)		

MA-40H Triplex	Plunger Size in. (mm)	Max. psi (bar)	*Gallon (Liter) Per/Rev	200 RPM US gpm (lpm)	250 RPM US gpm (lpm)	350 RPM US gpm (lpm)	450 RPM US gpm (lpm)	550 RPM US gpm (lpm)	Flows: 3 - 14 gpm (11.4 - 53.0 lpm) psi: 4392 - 5000 (bar: 302.8 - 344.7) Stroke Length: 2.50 in. (63.50 mm) Weight: 845 lbs. (383.3 kg)	Max. HP 40 (29.8 kW)
	1.000 (25.400)	4392 (302.8)	.0255 (.0965)	5.1 (19.3)	6.4 (24.2)	8.9 (33.7)	11.5 (43.5)	14.0 (53.0)		
.875 (22.225)	5000 (344.7)	.0195 (.0738)	3.9 (14.8)	4.9 (18.5)	6.8 (25.7)	8.8 (33.3)	10.7 (40.5)			
HP (Kilowatts) required @ RPM**				14.5 (10.8)	18.2 (13.6)	25.4 (18.9)	32.7 (24.4)	40.0 (29.8)		

MA-45M Quintuplex	Plunger Size in. (mm)	Max. psi (bar)	*Gallon (Liter) Per/Rev	200 RPM US gpm (lpm)	300 RPM US gpm (lpm)	400 RPM US gpm (lpm)	500 RPM US gpm (lpm)	600 RPM US gpm (lpm)	Flows: 7 - 80 gpm (26.5 - 302.8 lpm) psi: 860 - 3024 (bar: 59.3 - 208.5) Stroke Length: 2.25 in. (57.15 mm) Weight: 710 lbs. (322.1 kg)	Max. HP 45 (33.6 kW)
	1.875 (47.625)	860 (59.3)	.1345 (.5091)	26.9 (101.8)	40.3 (152.6)	53.8 (203.7)	67.2 (254.4)	80.7 (305.5)		
1.750 (44.450)	988 (68.1)	.1171 (.4433)	23.4 (88.6)	35.1 (132.9)	46.9 (177.5)	58.6 (221.8)	70.3 (266.1)			
1.625 (41.275)	1146 (79.0)	.1010 (.3823)	20.2 (76.5)	30.3 (114.7)	40.4 (152.9)	50.5 (191.2)	60.6 (229.4)			
1.500 (38.100)	1344 (92.7)	.0861 (.3259)	17.2 (65.1)	25.8 (97.7)	34.4 (130.2)	43.0 (162.8)	51.6 (195.3)			
1.375 (34.925)	1600 (110.3)	.0723 (.2737)	14.5 (54.9)	21.7 (82.1)	28.9 (109.4)	36.2 (137.0)	43.4 (164.3)			
1.250 (31.750)	1936 (133.5)	.0598 (.2264)	12.0 (45.4)	17.9 (67.8)	23.9 (90.5)	29.9 (113.2)	35.9 (135.9)			
1.125 (28.575)	2390 (164.8)	.0484 (.1832)	9.7 (36.7)	14.5 (54.9)	19.4 (73.4)	24.2 (91.6)	29.0 (109.8)			
1.000 (25.400)	3024 (208.5)	.0383 (.1450)	7.7 (29.1)	11.5 (43.5)	15.3 (57.9)	19.1 (72.3)	23.0 (87.1)			
HP (Kilowatts) required @ RPM**				15.0 (11.2)	22.5 (16.8)	30.0 (22.4)	37.5 (28.0)	45.0 (33.6)		

MA-45H Quintuplex	Plunger Size in. (mm)	Max. psi (bar)	*Gallon (Liter) Per/Rev	200 RPM US gpm (lpm)	300 RPM US gpm (lpm)	400 RPM US gpm (lpm)	500 RPM US gpm (lpm)	600 RPM US gpm (lpm)	Flows: 4 - 23 gpm (15.1 - 87.1 lpm) psi: 3024 - 5000 (bar: 208.5 - 344.7) Stroke Length: 2.25 in. (57.15 mm) Weight: 720 lbs. (326.6 kg)	Max. HP 45 (33.6 kW)
	1.000 (25.400)	3024 (208.5)	.0383 (.1450)	7.6 (28.8)	11.5 (43.5)	15.3 (57.9)	19.1 (72.3)	23.0 (87.1)		
.875 (22.225)	3950 (272.3)	.0293 (.1109)	5.9 (22.3)	8.8 (33.3)	11.7 (44.3)	14.6 (55.3)	17.6 (66.6)			
.750 (19.050)	5000 (344.7)	.0215 (.0814)	4.3 (16.3)	6.5 (24.6)	8.6 (32.6)	10.8 (40.9)	12.9 (48.8)			
HP (Kilowatts) required @ RPM**				15.0 (11.2)	22.5 (16.8)	30.0 (22.4)	37.5 (28.0)	45.0 (33.6)		

MA-60M Triplex	Plunger Size in. (mm)	Max. psi (bar)	*Gallon (Liter) Per/Rev	300 RPM US gpm (lpm)	350 RPM US gpm (lpm)	400 RPM US gpm (lpm)	450 RPM US gpm (lpm)	500 RPM US gpm (lpm)	Flows: 17 - 126 gpm (64.4 - 477.0 lpm) psi: 732 - 3200 (bar: 50.5 - 220.6) Stroke Length: 3.00 in. (76.20 mm) Weight: 945 lbs. (428.6 kg)	Max. HP 60 (44.7 kW)
	2.500 (63.500)	968 (66.7)	.1913 (.7241)	57.4 (217.3)	66.9 (253.2)	76.5 (289.6)	86.1 (325.9)	95.6 (361.9)		
2.375 (60.325)	1073 (74.0)	.1726 (.6534)	51.8 (196.1)	60.4 (228.6)	69.0 (261.2)	77.7 (294.1)	86.3 (326.7)			
2.250 (57.150)	1195 (82.4)	.1549 (.5864)	46.5 (176.0)	54.2 (205.2)	62.0 (234.7)	69.7 (263.8)	77.5 (293.4)			
2.125 (53.975)	1340 (92.4)	.1382 (.5231)	41.5 (157.1)	48.4 (183.2)	55.3 (209.3)	62.2 (235.5)	69.1 (261.6)			
2.000 (50.800)	1513 (104.3)	.1224 (.4633)	36.7 (138.9)	42.8 (162.0)	49.0 (185.5)	55.1 (208.6)	61.2 (231.7)			
1.875 (47.625)	1721 (118.7)	.1076 (.4073)	32.3 (122.3)	37.7 (142.7)	43.0 (162.8)	48.4 (183.2)	53.8 (203.7)			
1.750 (44.450)	1976 (136.2)	.0937 (.3547)	28.1 (106.4)	32.8 (124.2)	37.5 (142.0)	42.2 (159.7)	46.9 (177.5)			
1.625 (41.275)	2291 (158.0)	.0808 (.3059)	24.2 (91.6)	28.3 (107.1)	32.3 (122.3)	36.4 (137.8)	40.4 (152.9)			
1.500 (38.100)	2689 (185.4)	.0689 (.2608)	20.7 (78.4)	24.1 (91.2)	27.5 (104.1)	31.0 (117.3)	34.4 (130.2)			
1.375 (34.925)	3200 (220.6)	.0579 (.2192)	17.4 (65.9)	20.2 (76.5)	23.1 (87.4)	26.0 (98.4)	28.9 (109.4)			
HP (Kilowatts) required @ RPM**				36.0 (26.8)	42.0 (31.1)	48.0 (36.0)	54.0 (40.3)	60.0 (44.7)		

*Displacement based on 100% volumetric efficiency **Power based on 90% mechanical efficiency

MA Series Sizing Charts (Continued)

MA-60H Triplex	Plunger Size in. (mm)	Max. psi (bar)	*Gallon (Liter) Per/Rev	100 RPM US gpm (lpm)	200 RPM US gpm (lpm)	300 RPM US gpm (lpm)	400 RPM US gpm (lpm)	500 RPM US gpm (lpm)	Flows: 3 – 28 gpm (11.4 – 106.0 lpm) psi: 3200 – 5000 (bar: 220.6 – 344.7) Stroke Length: 3.00 in. (76.20 mm) Weight: 945 lbs. (428.6 kg)	Max. HP 60 (44.7 kW)
	1.375 (34.925)	3200 (220.6)	.0579 (.2192)	5.8 (22.0)	11.6 (43.9)	17.4 (65.9)	23.2 (87.8)	28.9 (109.4)		
	1.250 (31.750)	3872 (267.0)	.0478 (.1809)	4.8 (18.2)	9.6 (36.3)	14.3 (54.1)	19.2 (72.7)	23.9 (90.5)		
	1.125 (28.575)	4780 (329.6)	.0387 (.1465)	3.9 (14.8)	7.7 (29.1)	11.6 (43.9)	15.5 (58.7)	19.4 (73.4)		
	1.000 (25.400)	5000 (344.7)	.0306 (.1158)	3.1 (11.7)	6.1 (23.1)	9.2 (34.8)	12.2 (46.2)	15.3 (57.9)		
HP (Kilowatts) required @ RPM**				12.0 (8.9)	24.0 (17.9)	36.0 (26.8)	48.0 (35.8)	60.0 (44.7)		
MA-75L Quintuplex	Plunger Size in. (mm)	Max. psi (bar)	*Gallon (Liter) Per/Rev	200 RPM US gpm (lpm)	250 RPM US gpm (lpm)	350 RPM US gpm (lpm)	450 RPM US gpm (lpm)	550 RPM US gpm (lpm)	Flows: 47 – 194 gpm (177.9 – 734.4 lpm) psi: 595 – 889 (bar: 41.0 – 61.3) Stroke Length: 2.75 in. (69.85 mm) Weight: 1,435 lbs. (650.9 kg)	Max. HP 75 (55.9 kW)
	2.750 (69.850)	595 (41.2)	.3535 (1.3381)	70.7 (267.6)	88.4 (334.6)	123.7 (468.3)	159.1 (602.3)	194.5 (736.3)		
	2.625 (66.675)	653 (45.0)	.3221 (1.2193)	64.4 (243.8)	80.5 (304.7)	112.7 (426.6)	145.0 (548.9)	177.2 (670.8)		
	2.500 (63.500)	720 (49.6)	.2922 (1.1061)	58.4 (221.1)	73.0 (276.3)	102.3 (387.2)	131.5 (497.8)	160.7 (608.3)		
	2.375 (60.325)	798 (55.0)	.2637 (.9982)	52.7 (199.5)	65.9 (249.5)	92.3 (349.4)	118.7 (449.3)	145.0 (548.9)		
2.250 (57.150)	889 (61.3)	.2367 (.8960)	47.3 (179.0)	59.2 (224.1)	82.8 (313.4)	106.5 (403.1)	130.2 (492.9)			
HP (Kilowatts) required @ RPM**				27.3 (20.4)	34.1 (25.4)	47.7 (35.6)	61.4 (45.8)	75.0 (55.9)		
MA-75M Quintuplex	Plunger Size in. (mm)	Max. psi (bar)	*Gallon (Liter) Per/Rev	200 RPM US gpm (lpm)	250 RPM US gpm (lpm)	350 RPM US gpm (lpm)	450 RPM US gpm (lpm)	550 RPM US gpm (lpm)	Flows: 11 – 130 gpm (41.6 – 492.1 lpm) psi: 889 – 3000 (bar: 61.3 – 206.8) Stroke Length: 2.75 in. (69.85 mm) Weight: 1,270 lbs. (576.1 kg)	Max. HP 75 (55.9 kW)
	2.250 (57.150)	889 (61.3)	.2367 (.8960)	47.3 (179.0)	59.2 (224.1)	82.8 (313.4)	106.5 (403.1)	130.2 (492.9)		
	2.125 (53.975)	997 (68.7)	.2111 (.7991)	42.2 (159.7)	52.8 (199.9)	73.9 (279.7)	95.0 (359.6)	116.1 (439.5)		
	2.000 (50.800)	1125 (77.6)	.1870 (.7079)	37.4 (141.6)	46.8 (177.2)	65.5 (247.9)	84.2 (318.7)	102.9 (389.5)		
	1.875 (47.625)	1280 (88.3)	.1644 (.6223)	32.9 (124.5)	41.1 (155.6)	57.5 (217.7)	74.0 (280.1)	90.4 (342.2)		
	1.750 (44.450)	1468 (101.2)	.1432 (.5421)	28.6 (108.2)	35.8 (135.5)	50.1 (189.6)	64.4 (243.8)	78.7 (297.9)		
	1.625 (41.275)	1704 (117.5)	.1234 (.4671)	24.7 (93.5)	30.9 (117.0)	43.2 (163.5)	55.6 (210.5)	67.9 (257.0)		
	1.500 (38.100)	1998 (137.7)	.1052 (.3982)	21.0 (79.5)	26.3 (99.6)	36.8 (139.3)	47.3 (179.0)	57.9 (219.2)		
	1.375 (34.925)	2379 (164.0)	.0884 (.3346)	17.7 (67.0)	22.1 (83.7)	30.9 (117.0)	39.8 (150.7)	48.6 (184.0)		
1.250 (31.750)	2878 (198.4)	.0730 (.2763)	14.6 (55.3)	18.3 (69.3)	25.6 (96.9)	32.9 (124.5)	40.2 (152.2)			
1.125 (28.575)	3000 (206.8)	.0592 (.2241)	11.8 (44.7)	14.8 (56.0)	20.7 (78.4)	26.6 (100.7)	32.5 (123.0)			
HP (Kilowatts) required @ RPM**				27.3 (20.4)	34.1 (25.4)	47.8 (35.6)	61.4 (45.8)	75.0 (55.9)		
MA-75H Quintuplex	Plunger Size in. (mm)	Max. psi (bar)	*Gallon (Liter) Per/Rev	150 RPM US gpm (lpm)	250 RPM US gpm (lpm)	350 RPM US gpm (lpm)	450 RPM US gpm (lpm)	550 RPM US gpm (lpm)	Flows: 11 – 32 gpm (41.6 – 121.1 lpm) psi: 3553 – 5000 (bar: 245.0 – 344.7) Stroke Length: 2.75 in. (69.85 mm) Weight: 1,325 lbs. (601.0 kg)	Max. HP 75 (55.9 kW)
	1.125 (28.575)	3553 (245.0)	.0592 (.2241)	8.9 (33.7)	14.8 (56.0)	20.7 (78.4)	26.6 (100.7)	32.5 (123.0)		
	1.000 (25.400)	4497 (310.1)	.0468 (.1772)	7.0 (26.5)	11.7 (44.3)	16.4 (62.1)	21.0 (79.5)	25.7 (97.3)		
	.875 (22.225)	5000 (344.7)	.0358 (.1355)	5.4 (20.4)	8.9 (33.7)	12.5 (47.3)	16.1 (60.9)	19.7 (74.6)		
HP (Kilowatts) required @ RPM**				20.4 (15.2)	34.1 (25.4)	47.7 (35.6)	61.3 (45.7)	75.0 (55.9)		
MA-95L Triplex	Plunger Size in. (mm)	Max. psi (bar)	*Gallon (Liter) Per/Rev	250 RPM US gpm (lpm)	300 RPM US gpm (lpm)	350 RPM US gpm (lpm)	400 RPM US gpm (lpm)	450 RPM US gpm (lpm)	Flows: 46 – 224 gpm (174.1 – 847.9 lpm) psi: 650 – 1764 (bar: 44.8 – 121.6) Stroke Length: 4.00 in. (101.60 mm) Weight: 1,725 lbs. (782.4 kg)	Max. HP 95 (70.8 kW)
	3.500 (88.900)	650 (44.8)	.4998 (1.8919)	125.0 (473.2)	149.9 (567.4)	174.9 (662.1)	199.9 (756.7)	224.9 (851.3)		
	3.250 (82.550)	754 (52.0)	.4310 (1.6315)	107.7 (407.7)	129.3 (489.5)	150.8 (570.8)	172.4 (652.6)	193.9 (734.0)		
	3.000 (76.200)	884 (60.9)	.3672 (1.3900)	91.8 (347.5)	110.2 (417.2)	128.5 (486.4)	146.9 (556.1)	165.2 (625.4)		
	2.750 (69.850)	1053 (72.6)	.3086 (1.1682)	77.1 (291.9)	92.6 (350.5)	108.0 (408.8)	123.4 (467.1)	138.8 (525.4)		
	2.625 (66.675)	1156 (79.7)	.2811 (1.0641)	70.3 (266.1)	84.3 (319.1)	98.4 (372.5)	112.5 (425.9)	126.5 (478.9)		
	2.500 (63.500)	1274 (87.8)	.2550 (.9653)	63.8 (241.5)	76.5 (289.6)	89.3 (338.0)	102.0 (386.1)	114.8 (434.6)		
	2.375 (60.325)	1411 (97.3)	.2301 (.8710)	57.5 (217.7)	69.0 (261.2)	80.5 (304.7)	92.1 (348.6)	103.6 (392.2)		
	2.250 (57.150)	1572 (108.4)	.2066 (.7821)	51.6 (195.3)	62.0 (234.7)	72.3 (273.7)	82.6 (312.7)	92.9 (351.7)		
2.125 (53.975)	1764 (121.6)	.1842 (.6973)	46.1 (174.5)	55.3 (209.3)	64.5 (244.2)	73.7 (279.0)	82.9 (313.8)			
HP (Kilowatts) required @ RPM**				52.7 (39.3)	63.2 (47.1)	73.7 (55.0)	84.3 (62.9)	95.0 (70.8)		
MA-95M Triplex	Plunger Size in. (mm)	Max. psi (bar)	*Gallon (Liter) Per/Rev	250 RPM US gpm (lpm)	300 RPM US gpm (lpm)	350 RPM US gpm (lpm)	400 RPM US gpm (lpm)	450 RPM US gpm (lpm)	Flows: 19 – 92 gpm (71.9 – 348.3 lpm) psi: 1572 – 3600 (bar: 108.4 – 248.2) Stroke Length: 4.00 in. (101.60 mm) Weight: 1,600 lbs. (725.7 kg)	Max. HP 95 (70.8 kW)
	2.250 (57.150)	1572 (108.4)	.2066 (.7821)	51.6 (195.3)	62.0 (234.7)	72.3 (273.7)	82.6 (312.7)	92.9 (351.7)		
	2.125 (53.975)	1763 (121.6)	.1842 (.6973)	46.1 (174.5)	55.3 (209.3)	64.5 (244.2)	73.7 (279.0)	82.9 (313.8)		
	2.000 (50.800)	1992 (137.3)	.1632 (.6178)	40.8 (154.4)	49.0 (185.5)	57.1 (216.1)	65.3 (247.2)	73.4 (277.8)		
	1.875 (47.625)	2265 (156.2)	.1434 (.5428)	35.9 (135.9)	43.0 (162.8)	50.2 (190.0)	57.4 (217.3)	65.5 (247.9)		
	1.750 (44.450)	2600 (179.3)	.1250 (.4732)	31.2 (118.1)	37.5 (142.0)	43.7 (165.4)	50.0 (189.3)	56.2 (212.7)		
	1.625 (41.275)	3016 (207.9)	.1077 (.4077)	26.9 (101.8)	32.3 (122.3)	37.7 (142.7)	43.1 (163.2)	48.5 (183.6)		
	1.500 (38.100)	3250 (224.1)	.0918 (.3475)	23.0 (87.1)	27.5 (104.1)	32.1 (121.5)	36.7 (138.9)	41.3 (156.3)		
1.375 (34.925)	3600 (248.2)	.0771 (.2919)	19.3 (73.1)	23.1 (87.4)	27.0 (102.2)	30.9 (117.0)	34.7 (131.4)			
HP (Kilowatts) required @ RPM**				52.6 (39.2)	63.2 (47.1)	73.7 (55.0)	84.2 (62.8)	95.0 (70.8)		

*Displacement based on 100% volumetric efficiency

**Power based on 90% mechanical efficiency

MA Series Sizing Charts (Continued)

Plunger Size in. (mm)	Max. psi (bar)	*Gallon (Liter) Per/Rev	250 RPM	300 RPM	350 RPM	400 RPM	450 RPM	Flows: 61 – 239 gpm (230.9 – 904.7 lpm) psi: 775 – 1682 (bar: 53.4 – 116.0) Stroke Length: 4.25 in. (107.95 mm) Weight: 2,050 lbs. (929.9 kg)	Max. HP 120 (89.5 kW)
			US gpm (lpm)	US gpm (lpm)	US gpm (lpm)	US gpm (lpm)	US gpm (lpm)		
3.500 (88.900)	775 (53.4)	.5310 (2.0101)	132.8 (502.7)	159.3 (603.0)	185.9 (703.7)	212.4 (804.0)	239.0 (904.7)		
3.375 (85.725)	833 (57.4)	.4938 (1.8692)	123.4 (467.1)	148.1 (560.6)	172.8 (654.1)	197.5 (747.6)	222.2 (841.1)		
3.250 (82.550)	898 (61.9)	.4579 (1.7333)	114.5 (433.4)	137.4 (520.1)	160.3 (606.8)	183.2 (693.5)	206.0 (779.8)		
3.125 (79.375)	971 (66.9)	.4233 (1.6024)	105.8 (400.5)	127.0 (480.7)	148.2 (561.0)	169.3 (640.9)	190.5 (721.1)		
3.000 (76.200)	1054 (72.7)	.3902 (1.4771)	97.5 (369.1)	117.0 (442.9)	136.6 (517.1)	156.1 (590.9)	175.6 (664.7)		
2.875 (73.025)	1148 (79.2)	.3583 (1.3563)	89.6 (339.2)	107.5 (406.9)	125.4 (474.7)	143.3 (542.4)	161.2 (610.2)		
2.750 (69.850)	1254 (86.5)	.3278 (1.2409)	82.0 (310.4)	98.4 (372.5)	114.7 (434.2)	131.1 (496.3)	147.5 (558.3)		
2.625 (66.675)	1377 (94.9)	.2987 (1.1307)	74.7 (282.8)	89.6 (339.2)	104.5 (395.6)	119.5 (452.4)	134.4 (508.8)		
2.500 (63.500)	1518 (104.7)	.2709 (1.0255)	67.7 (256.3)	81.3 (307.8)	94.8 (358.9)	108.4 (410.3)	121.9 (461.4)		
2.375 (60.325)	1682 (116.0)	.2445 (.9255)	61.1 (231.3)	73.4 (277.8)	85.6 (324.0)	97.8 (370.2)	110.0 (416.4)		
HP (Kilowatts) required @ RPM**			66.7 (49.7)	80.1 (59.7)	93.4 (69.6)	106.8 (79.6)	120.0 (89.5)		

Plunger Size in. (mm)	Max. psi (bar)	*Gallon (Liter) Per/Rev	250 RPM	300 RPM	350 RPM	400 RPM	450 RPM	Flows: 24 – 98 gpm (90.8 – 371.0 lpm) psi: 1873 – 3600 (bar: 129.1 – 248.2) Stroke Length: 4.25 in. (107.95 mm) Weight: 1,950 lbs. (884.5 kg)	Max. HP 120 (89.5 kW)		
			US gpm (lpm)	US gpm (lpm)	US gpm (lpm)	US gpm (lpm)	US gpm (lpm)				
2.250 (57.150)	1873 (129.1)	.2195 (.8309)	54.9 (207.8)	65.8 (249.1)	76.8 (290.7)	87.8 (332.4)	98.8 (374.0)				
2.125 (53.975)	2100 (144.8)	.1958 (.7412)	48.9 (185.1)	58.7 (222.2)	68.5 (259.3)	78.3 (296.4)	88.1 (333.5)				
2.000 (50.800)	2371 (163.5)	.1734 (.6564)	43.4 (164.3)	52.0 (196.8)	60.7 (229.8)	69.4 (262.7)	78.0 (295.3)				
1.875 (47.625)	2697 (186.0)	.1524 (.5769)	38.1 (144.2)	45.7 (173.0)	53.3 (201.8)	61.0 (230.9)	68.6 (259.7)				
1.750 (44.450)	3097 (213.5)	.1328 (.5027)	33.2 (125.7)	39.8 (150.7)	46.5 (176.0)	53.1 (201.0)	59.7 (226.0)				
1.625 (41.275)	3250 (224.1)	.1145 (.4334)	28.6 (108.3)	34.3 (129.8)	40.1 (151.8)	45.8 (173.4)	51.5 (194.9)				
1.500 (38.100)	3600 (248.2)	.0975 (.3691)	24.4 (92.4)	29.3 (110.9)	34.1 (129.1)	39.0 (147.6)	43.9 (166.2)				
HP (Kilowatts) required @ RPM**			66.6 (49.7)	80.0 (59.7)	93.3 (69.6)	106.6 (79.5)	120.0 (89.5)				

Plunger Size in. (mm)	Max. psi (bar)	*Gallon (Liter) Per/Rev	250 RPM	300 RPM	350 RPM	400 RPM	450 RPM	Flows: 20 – 78 gpm (75.7 – 295.3 lpm) psi: 2284 – 5016 (bar: 157.5 – 345.8) Stroke Length: 4.25 in. (107.95 mm) Weight: 2,050 lbs. (929.9 kg)	Max. HP 120 (89.5 kW)		
			US gpm (lpm)	US gpm (lpm)	US gpm (lpm)	US gpm (lpm)	US gpm (lpm)				
2.000 (50.800)	2284 (157.5)	.1734 (.6564)	43.4 (164.3)	52.0 (196.8)	60.7 (229.8)	69.4 (262.7)	78.0 (295.3)				
1.875 (47.625)	2397 (165.3)	.1524 (.5769)	38.1 (144.2)	45.7 (173.0)	53.3 (201.8)	61.0 (230.9)	68.6 (259.7)				
1.750 (44.450)	3097 (213.5)	.1328 (.5027)	33.2 (125.7)	39.8 (150.7)	46.5 (176.0)	53.1 (201.0)	59.7 (226.0)				
1.625 (41.275)	3592 (247.7)	.1145 (.4334)	28.6 (108.3)	34.3 (129.8)	40.1 (151.8)	45.8 (173.4)	51.5 (194.9)				
1.500 (38.100)	4215 (290.6)	.0975 (.3691)	24.4 (92.4)	29.3 (110.9)	34.1 (129.1)	39.0 (147.6)	43.9 (166.2)				
1.375 (34.925)	5016 (345.8)	.0820 (.3104)	20.5 (77.6)	24.6 (93.1)	28.7 (108.6)	32.8 (124.2)	36.9 (139.7)				
HP (Kilowatts) required @ RPM**			64.2 (47.9)	77.1 (57.5)	89.9 (67.0)	102.7 (76.6)	120.0 (89.5)				

Plunger Size in. (mm)	Max. psi (bar)	*Gallon (Liter) Per/Rev	250 RPM	300 RPM	350 RPM	400 RPM	450 RPM	Flows: 94 – 330 gpm (355.8 – 1249.2 lpm) psi: 724 – 1400 (bar: 49.9 – 96.5) Stroke Length: 4.50 in. (114.30 mm) Weight: 2,680 lbs. (1,215.6 kg)	Max. HP 155 (115.6 kW)
			US gpm (lpm)	US gpm (lpm)	US gpm (lpm)	US gpm (lpm)	US gpm (lpm)		
4.000 (101.600)	724 (49.9)	.7344 (2.7800)	183.6 (695.0)	220.3 (833.9)	257.0 (972.9)	293.8 (1112.2)	330.5 (1251.1)		
3.875 (98.425)	771 (53.2)	.6892 (2.6089)	172.3 (652.2)	206.8 (782.8)	241.2 (913.0)	275.7 (1043.6)	310.1 (1173.9)		
3.750 (95.250)	823 (56.7)	.6455 (2.4435)	161.4 (611.0)	193.6 (732.9)	225.9 (855.1)	258.2 (977.4)	290.5 (1099.7)		
3.625 (92.075)	881 (60.7)	.6032 (2.2834)	150.8 (570.8)	180.9 (684.8)	211.1 (799.1)	241.3 (913.4)	271.4 (1027.4)		
3.500 (88.900)	945 (65.2)	.5623 (2.1285)	140.6 (532.2)	168.7 (638.6)	196.8 (745.0)	224.9 (851.3)	253.0 (957.7)		
3.375 (85.725)	1016 (70.1)	.5228 (1.9790)	130.7 (494.8)	156.8 (593.6)	183.0 (692.7)	209.1 (791.5)	235.3 (890.7)		
3.250 (82.550)	1096 (75.6)	.4848 (1.8352)	121.2 (458.8)	145.4 (550.4)	169.7 (642.4)	193.9 (734.0)	218.2 (826.0)		
3.125 (79.375)	1185 (81.7)	.4482 (1.6966)	112.1 (424.3)	134.5 (509.1)	156.9 (593.9)	179.3 (678.7)	201.7 (763.5)		
3.000 (76.200)	1285 (88.6)	.4131 (1.5638)	103.3 (391.0)	123.9 (469.0)	144.6 (547.4)	165.2 (625.4)	185.9 (703.7)		
2.875 (73.025)	1400 (96.5)	.3794 (1.4362)	94.8 (358.9)	113.8 (430.8)	132.8 (502.7)	151.8 (576.6)	170.7 (646.2)		
HP (Kilowatts) required @ RPM**			86.2 (64.3)	103.4 (77.1)	120.7 (90.0)	137.9 (102.8)	155.0 (115.6)		

Plunger Size in. (mm)	Max. psi (bar)	*Gallon (Liter) Per/Rev	250 RPM	300 RPM	350 RPM	400 RPM	450 RPM	Flows: 35 – 156 gpm (132.5 – 590.5 lpm) psi: 1530 – 3600 (bar: 105.5 – 248.2) Stroke Length: 4.50 in. (114.30 mm) Weight: 2,680 lbs. (1,215.6 kg)	Max. HP 155 (115.6 kW)
			US gpm (lpm)	US gpm (lpm)	US gpm (lpm)	US gpm (lpm)	US gpm (lpm)		
2.750 (69.850)	1530 (105.5)	.3471 (1.3139)	86.8 (328.6)	104.1 (394.1)	121.5 (459.9)	138.8 (525.4)	156.2 (591.3)		
2.625 (66.675)	1679 (115.8)	.3163 (1.1973)	79.1 (299.4)	94.9 (359.2)	110.7 (419.0)	126.5 (479.0)	142.3 (538.7)		
2.500 (63.500)	1852 (127.7)	.2869 (1.0860)	71.7 (271.4)	86.1 (325.9)	100.4 (380.1)	114.8 (434.6)	129.1 (488.7)		
2.375 (60.325)	2051 (141.4)	.2589 (9800)	64.7 (244.9)	77.7 (294.1)	90.6 (343.0)	103.6 (392.2)	116.5 (441.0)		
2.250 (57.150)	2286 (157.6)	.2324 (.8797)	58.1 (219.9)	69.7 (263.8)	81.3 (308.0)	92.9 (351.7)	104.6 (396.0)		
2.125 (53.975)	2562 (176.6)	.2073 (.7847)	51.8 (196.1)	62.2 (235.5)	72.5 (274.4)	82.9 (313.8)	93.3 (353.2)		
2.000 (50.800)	2892 (199.4)	.1836 (.6950)	45.9 (173.8)	55.1 (208.6)	64.3 (243.4)	73.4 (277.8)	82.6 (312.7)		
1.875 (47.625)	3291 (226.9)	.1614 (.6111)	40.3 (152.6)	48.4 (183.2)	56.5 (214.0)	64.5 (244.2)	72.6 (274.8)		
1.750 (44.450)	3600 (248.2)	.1406 (.5322)	35.1 (132.9)	42.2 (159.7)	49.2 (186.2)	56.2 (212.7)	63.3 (239.6)		
HP (Kilowatts) required @ RPM**			86.1 (64.2)	103.3 (77.0)	120.5 (89.9)	137.8 (102.8)	155.0 (115.6)		

*Displacement based on 100% volumetric efficiency **Power based on 90% mechanical efficiency

MA Series Sizing Charts (Continued)

	Plunger Size in. (mm)	Max. psi (bar)	*Gallon (Liter) Per/Rev	250 RPM US gpm (lpm)	300 RPM US gpm (lpm)	350 RPM US gpm (lpm)	400 RPM US gpm (lpm)	450 RPM US gpm (lpm)		
MA-155H Triplex	1.875 (47.625)	3289 (226.8)	.1614 (.6111)	40.3 (152.6)	48.4 (183.2)	56.5 (213.9)	64.5 (244.2)	72.6 (274.8)	Flows: 25 – 72 gpm (94.6 – 272.5 lpm) psi: 3289 – 5000 (bar: 226.8 – 344.7) Stroke Length: 4.50 in. (114.30 mm) Weight: 2,935 lbs. (1,331.3 kg)	Max. HP 155 (115.6 kW)
	1.750 (44.450)	3776 (260.3)	.1406 (.5322)	35.1 (132.9)	42.2 (159.7)	49.2 (186.2)	56.2 (212.7)	63.3 (239.6)		
	1.625 (41.275)	4379 (301.9)	.1212 (.4588)	30.3 (114.7)	36.4 (137.8)	42.4 (160.5)	48.5 (183.6)	54.5 (206.3)		
	1.500 (38.100)	5000 (344.7)	.1033 (.3910)	25.8 (97.7)	31.0 (117.3)	36.1 (136.7)	41.3 (156.3)	46.5 (176.0)		
	HP (Kilowatts) required @ RPM**				86.0 (64.1)	103.3 (77.0)	120.5 (89.9)	137.7 (102.7)		

	Plunger Size in. (mm)	Max. psi (bar)	*Gallon (Liter) Per/Rev	250 RPM US gpm (lpm)	300 RPM US gpm (lpm)	350 RPM US gpm (lpm)	400 RPM US gpm (lpm)	450 RPM US gpm (lpm)		
MA-240K Quintuplex	4.500 (114.300)	562 (38.7)	1.4631 (5.5384)	365.8 (1384.7)	438.9 (1661.4)	512.1 (1938.5)	585.2 (2215.2)	658.4 (2492.3)	Flows: 221 – 658 gpm (836.6 – 2490.8 lpm) psi: 562 – 929 (bar: 38.7 – 64.1) Stroke Length: 4.25 in. (107.95 mm) Weight: 3,240 lbs. (1,469.6 kg)	Max. HP 240 (179.0 kW)
	4.375 (111.125)	595 (41.0)	1.3829 (5.2348)	345.7 (1308.6)	414.9 (1570.6)	484.0 (1832.1)	553.2 (2094.1)	622.3 (2355.7)		
	4.250 (107.950)	629 (43.4)	1.3050 (4.9400)	326.3 (1235.2)	391.5 (1482.0)	456.8 (1729.2)	522.0 (1976.0)	587.3 (2223.2)		
	4.125 (104.775)	669 (46.1)	1.2294 (4.6538)	307.3 (1163.3)	368.8 (1396.1)	430.3 (1628.9)	491.8 (1861.7)	553.3 (2094.5)		
	4.000 (101.600)	711 (49.0)	1.1560 (4.3759)	289.0 (1094.0)	346.8 (1312.8)	404.6 (1531.6)	462.4 (1750.4)	520.2 (1969.2)		
	3.875 (98.425)	758 (52.3)	1.0849 (4.1068)	271.2 (1026.6)	325.5 (1232.2)	379.7 (1437.3)	434.0 (1642.9)	488.2 (1848.0)		
	3.750 (95.250)	809 (55.8)	1.0160 (3.8460)	254.0 (961.5)	304.8 (1153.8)	355.6 (1346.1)	406.4 (1538.4)	457.2 (1730.7)		
	3.625 (92.075)	866 (59.7)	.9494 (3.5939)	237.4 (898.7)	284.8 (1078.1)	332.3 (1257.9)	379.8 (1437.7)	427.2 (1617.1)		
	3.500 (88.900)	929 (64.1)	.8851 (3.3505)	221.3 (837.7)	265.5 (1005.0)	309.8 (1172.7)	354.0 (1340.0)	398.3 (1507.7)		
	HP (Kilowatts) required @ RPM**				133.3 (99.4)	160.0 (119.3)	186.6 (139.1)	213.3 (159.1)		

	Plunger Size in. (mm)	Max. psi (bar)	*Gallon (Liter) Per/Rev	250 RPM US gpm (lpm)	300 RPM US gpm (lpm)	350 RPM US gpm (lpm)	400 RPM US gpm (lpm)	450 RPM US gpm (lpm)		
MA-240L Quintuplex	3.500 (88.900)	930 (64.1)	.8851 (3.3505)	221.3 (837.7)	265.5 (1005.0)	309.8 (1172.7)	354.0 (1340.0)	398.3 (1507.7)	Flows: 101 – 398 gpm (382.3 – 1506.6 lpm) psi: 930 – 2020 (bar: 64.1 – 139.3) Stroke Length: 4.25 in. (107.95 mm) Weight: 3,240 lbs. (1,469.6 kg)	Max. HP 240 (179.0 kW)
	3.375 (85.725)	1000 (68.9)	.8230 (3.1154)	205.7 (778.7)	246.9 (934.6)	288.0 (1090.2)	329.2 (1246.2)	370.3 (1401.7)		
	3.250 (82.550)	1079 (74.4)	.7631 (2.8886)	190.8 (722.3)	228.9 (866.5)	267.1 (1011.1)	305.3 (1155.7)	343.4 (1299.9)		
	3.125 (79.375)	1166 (80.4)	.7056 (2.6710)	176.4 (667.7)	211.7 (801.4)	246.9 (934.6)	282.2 (1068.2)	317.5 (1201.9)		
	3.000 (76.200)	1266 (87.3)	.6503 (2.4617)	162.6 (615.5)	195.1 (738.5)	227.6 (861.6)	260.1 (984.6)	292.6 (1107.6)		
	2.875 (73.025)	1376 (94.9)	.5972 (2.2606)	149.3 (565.2)	179.2 (678.3)	209.0 (791.2)	238.9 (904.3)	268.7 (1017.1)		
	2.750 (69.850)	1506 (103.8)	.5464 (2.0683)	136.6 (517.1)	163.9 (620.4)	191.2 (723.8)	218.6 (827.5)	245.9 (930.8)		
	2.625 (66.675)	1652 (113.9)	.4978 (1.8844)	124.5 (471.3)	149.4 (565.5)	174.2 (659.4)	199.1 (753.7)	224.0 (847.9)		
	2.500 (63.500)	1823 (125.7)	.4516 (1.7095)	112.9 (427.4)	135.5 (512.9)	158.0 (598.1)	180.6 (683.6)	203.2 (769.2)		
	2.375 (60.325)	2020 (139.3)	.4075 (1.5426)	101.9 (385.7)	122.3 (463.0)	142.6 (539.8)	163.0 (617.0)	183.4 (694.2)		
HP (Kilowatts) required @ RPM**				133.4 (99.5)	160.1 (119.4)	186.8 (139.3)	213.5 (159.2)	240.0 (179.0)		

	Plunger Size in. (mm)	Max. psi (bar)	*Gallon (Liter) Per/Rev	250 RPM US gpm (lpm)	300 RPM US gpm (lpm)	350 RPM US gpm (lpm)	400 RPM US gpm (lpm)	450 RPM US gpm (lpm)		
MA-240M Quintuplex	2.250 (57.150)	2248 (155.0)	.3658 (1.3847)	91.4 (346.0)	109.7 (415.3)	128.0 (484.5)	146.3 (553.8)	164.6 (623.1)	Flows: 2248 – 3600 gpm (208.2 – 620.8 lpm) psi: 2248 – 3600 (bar: 155.0 – 248.2) Stroke Length: 4.25 in. (107.95 mm) Weight: 3,580 lbs. (1,623.9 kg)	Max. HP 240 (179.0 kW)
	2.125 (53.975)	2520 (173.7)	.3263 (1.2352)	81.6 (308.9)	97.9 (370.6)	114.2 (432.3)	130.5 (494.0)	146.8 (555.7)		
	2.000 (50.800)	2845 (196.2)	.2890 (1.0940)	72.3 (273.7)	86.7 (328.2)	101.2 (383.1)	115.6 (437.6)	130.1 (492.5)		
	1.875 (47.625)	3237 (223.2)	.2540 (.9615)	63.5 (240.4)	76.2 (288.4)	88.9 (336.5)	101.6 (384.6)	114.3 (432.7)		
	1.750 (44.450)	3600 (248.2)	.2213 (.8377)	55.3 (209.3)	66.4 (251.4)	77.4 (293.0)	88.5 (335.0)	99.6 (377.0)		
HP (Kilowatts) required @ RPM**				133.3 (99.4)	160.0 (119.3)	186.6 (139.1)	213.3 (159.1)	240.0 (179.0)		

	Plunger Size in. (mm)	Max. psi (bar)	*Gallon (Liter) Per/Rev	250 RPM US gpm (lpm)	300 RPM US gpm (lpm)	350 RPM US gpm (lpm)	400 RPM US gpm (lpm)	450 RPM US gpm (lpm)		
MA-240H Quintuplex	1.875 (47.625)	3237 (223.2)	.2540 (.9615)	63.5 (240.4)	76.2 (288.4)	88.9 (336.5)	101.6 (384.6)	114.3 (432.7)	Flows: 40 – 114 gpm (151.4 – 431.5 lpm) psi: 3237 – 5000 (bar: 223.2 – 344.7) Stroke Length: 4.25 in. (107.95 mm) Weight: 3,240 lbs. (1,469.6 kg)	Max. HP 240 (179.0 kW)
	1.750 (44.450)	3716 (256.2)	.2213 (.8377)	55.3 (209.3)	66.4 (251.4)	77.4 (293.0)	88.5 (335.0)	99.6 (377.0)		
	1.625 (41.275)	4309 (297.1)	.1908 (.7223)	47.7 (180.6)	57.2 (216.5)	66.8 (252.9)	76.3 (288.8)	85.9 (325.2)		
	1.500 (38.100)	5000 (344.7)	.1626 (.6155)	40.6 (153.7)	48.8 (184.7)	56.9 (215.4)	65.0 (246.1)	73.2 (277.1)		
	HP (Kilowatts) required @ RPM**				133.3 (99.4)	160.0 (119.3)	186.6 (139.1)	213.3 (159.1)		

*Displacement based on 100% volumetric efficiency

**Power based on 90% mechanical efficiency

MA Series Sizing Charts (Continued)

	Plunger Size in. (mm)	Max. psi (bar)	*Gallon (Liter) Per/Rev	200 RPM US gpm (lpm)	250 RPM US gpm (lpm)	300 RPM US gpm (lpm)	350 RPM US gpm (lpm)	400 RPM US gpm (lpm)		
MA-300L Quintuplex	4.000(101.600)	851(58.7)	1.3600(5.1482)	272.0(1029.6)	340.0(1287.0)	408.0(1544.4)	476.0(1801.9)	544.0(2059.3)	Flows: 153 – 476 gpm (579.2 – 1801.9 lpm) psi: 851 – 1480 (bar: 58.7 – 102.0) Stroke Length: 5.00 in. (127.00 mm) Weight: 5,000 lbs. (2,226.8 kg)	Max. HP 300 (223.7 kW)
	3.875(98.425)	907(62.5)	1.2763(4.8313)	255.3(966.4)	319.1(1207.9)	382.9(1449.4)	446.7(1691.0)	510.5(1932.5)		
	3.750(95.250)	969(66.8)	1.1953(4.5247)	239.1(905.1)	298.8(1131.1)	358.6(1357.4)	418.4(1583.8)	478.1(1809.8)		
	3.625(92.075)	1037(71.5)	1.1170(4.2283)	223.4(845.7)	279.2(1056.9)	335.1(1268.5)	390.9(1479.7)	446.8(1691.3)		
	3.500(88.900)	1112(76.7)	1.0413(3.9417)	208.3(788.5)	260.3(985.3)	312.4(1182.6)	364.4(1379.4)	416.5(1576.6)		
	3.375(85.725)	1196(82.5)	.9682(3.6650)	193.6(732.9)	242.1(916.4)	290.5(1099.7)	338.9(1282.9)	387.3(1466.1)		
	3.250(82.550)	1290(88.9)	.8978(3.3985)	179.6(679.9)	224.5(849.8)	269.3(1019.4)	314.2(1189.4)	359.1(1359.3)		
	3.125(79.375)	1395(96.2)	.8301(3.1423)	166.0(628.4)	207.5(785.5)	249.0(942.6)	290.5(1099.7)	332.0(1256.8)		
	3.000(76.200)	1480(102.0)	.7650(2.8958)	153.0(579.2)	191.3(724.1)	229.5(868.8)	267.8(1013.7)	306.0(1158.3)		
	HP (Kilowatts) required @ RPM**				150.0(111.9)	188.0(140.2)	225.0(167.8)	263.0(196.1)		
MA-300M Quintuplex	2.875(73.025)	1648(113.6)	.7026(2.6596)	140.5(531.9)	175.6(664.7)	210.8(798.0)	245.9(930.8)	281.0(1063.7)	Flows: 53 – 281 gpm (200.6 – 1063.7 lpm) psi: 1648 – 3600 (bar: 113.6 – 248.2) Stroke Length: 5.00 in. (127.00 mm) Weight: 4,925 lbs. (2,233.9 kg)	Max. HP 300 (223.7 kW)
	2.750(69.850)	1801(124.2)	.6428(2.4333)	128.6(486.8)	160.7(608.3)	192.8(729.8)	225.0(851.7)	257.1(973.2)		
	2.625(66.675)	1977(136.3)	.5857(2.2171)	117.1(443.3)	146.4(554.2)	175.7(665.1)	205.0(776.0)	234.3(886.9)		
	2.500(63.500)	2180(150.3)	.5313(2.0112)	106.3(402.4)	132.8(502.7)	159.4(603.4)	185.9(703.7)	212.5(804.4)		
	2.375(60.325)	2415(166.5)	.4795(1.8151)	95.9(363.0)	119.9(453.9)	143.8(544.3)	167.8(635.2)	191.8(726.0)		
	2.250(57.150)	2691(185.5)	.4303(1.6289)	86.1(325.9)	107.6(407.3)	129.1(488.7)	150.6(570.1)	172.1(651.5)		
	2.125(53.975)	3017(208.0)	.3838(1.4528)	76.8(290.7)	96.0(363.4)	115.1(435.7)	134.3(508.4)	153.5(581.1)		
	2.000(50.800)	3406(234.8)	.3400(1.2870)	68.0(257.4)	85.0(321.8)	102.0(386.1)	119.0(450.5)	136.0(514.8)		
	1.875(47.625)	3600(248.2)	.2988(1.1311)	59.8(226.4)	74.7(282.8)	89.6(339.2)	104.6(396.0)	119.5(452.4)		
	1.750(44.450)	3600(248.2)	.2603(0.9853)	52.1(197.2)	65.1(246.4)	78.1(295.6)	91.1(344.9)	104.1(394.1)		
HP (Kilowatts) required @ RPM**				150.0(111.9)	188.0(140.2)	225.0(167.8)	263.0(196.1)	300.0(223.7)		
MA-300H Quintuplex	1.875(47.6)	3875(267.2)	0.2988(1.1312)	59.8(226.2)	74.7(282.8)	89.6(339.4)	104.6(395.9)	119.5(452.5)	Flows: 38.3 – 119.5 gpm (144.8 – 452.5 lpm) psi: 3875 – 6055 (bar: 267.2 – 417.5) Stroke Length: 5.00 in. (127.00 mm) Weight: 5,000 lbs. (2,267.9 kg)	Max. HP 300 (223.7 kW)
	1.750(44.5)	4449(306.7)	0.2603(0.9854)	52.1(197.1)	65.1(246.3)	78.1(295.6)	91.1(344.9)	104.1(394.2)		
	1.625(41.3)	5159(355.7)	0.2245(0.8498)	44.9(170.0)	56.1(212.5)	67.4(254.9)	78.6(297.4)	89.8(339.9)		
	1.500(38.1)	6055(417.5)	0.1913(0.7241)	38.3(144.8)	47.8(181.0)	57.4(217.2)	67.0(253.5)	76.5(289.7)		
	HP (Kilowatts) required @ RPM**				150.0(112.0)	188.0(140.0)	225.0(168.0)	263.0(196.0)		
MA-425M Quintuplex	2.875(73)	2345(161.7)	0.7026(2.6596)	140.5(531.9)	175.6(664.9)	210.8(797.9)	245.9(930.8)	281.0(1063.8)	Flows: 59.8 – 281 gpm (226.2 – 1063.8 lpm) psi: 2345 – 5514 (bar: 161.7 – 380.2) Stroke Length: 5.00 in. (127.00 mm) Weight: 5,200 lbs. (2358.68 kg)	Max. HP 427 (318 kW)
	2.750(69.9)	2563(176.7)	0.6428(2.4333)	128.6(486.7)	160.7(608.3)	192.8(730)	225.0(851.7)	257.1(973.3)		
	2.625(66.7)	2813(193.9)	0.5857(2.2171)	117.1(443.4)	146.4(554.3)	175.7(665.1)	205.0(776)	234.3(886.8)		
	2.500(63.5)	3102(213.9)	0.5313(2.0112)	106.3(402.2)	132.8(502.8)	159.4(603.3)	185.9(703.9)	212.5(804.4)		
	2.375(60.3)	3437(237)	0.4795(1.8149)	95.9(363)	119.9(453.7)	143.8(544.5)	167.8(635.2)	191.8(726)		
	2.250(57.2)	3829(264)	0.4303(1.6289)	86.1(325.8)	107.6(407.2)	129.1(488.7)	150.6(570.1)	172.1(651.6)		
	2.125(54)	4293(296)	0.3838(1.453)	76.8(290.6)	96(363.2)	115.1(435.9)	134.3(508.5)	153.5(581.2)		
	2.000(50.8)	4846(334.1)	0.34(1.287)	68(257.4)	85(321.8)	102(386.1)	119(450.5)	136(514.8)		
	1.875(47.6)	5514(380.2)	0.2988(1.1312)	59.8(226.2)	74.7(282.8)	89.6(339.4)	104.6(395.9)	119.5(452.5)		
	HP (Kilowatts) required @ RPM**				214(160)	267(199)	321(239)	374(279)		
MA-425L Quintuplex	4.500(114.3)	957(66)	1.7213(6.5156)	344.3(1303.1)	430.3(1628.9)	516.4(1954.7)	602.4(2280.5)	688.5(2606.3)	Flows: 153 – 688.5 gpm (579.2 – 2606.3 lpm) psi: 957 – 2154 (bar: 66 – 148.5) Stroke Length: 5.00 in. (127.00 mm) Weight: 5,200 lbs. (2358.68 kg)	Max. HP 427 (318 kW)
	4.250(108)	1073(74)	1.5353(5.8118)	307.1(1162.4)	383.8(1452.9)	460.6(1743.5)	537.4(2034.1)	614.1(2324.7)		
	4.000(101.6)	1212(83.6)	1.36(5.1482)	272(1029.6)	340(1287)	408(1544.4)	476(1801.9)	544(2059.3)		
	3.875(98.4)	1291(89)	1.2763(4.8314)	255.3(966.3)	319.1(1207.9)	382.9(1449.4)	446.7(1691)	510.5(1932.6)		
	3.750(95.3)	1378(95)	1.1953(4.5247)	239.1(904.9)	298.8(1131.2)	358.6(1357.4)	418.4(1583.7)	478.1(1809.9)		
	3.625(92.1)	1475(101.7)	1.117(4.2281)	223.4(845.6)	279.2(1057)	335.1(1268.4)	390.9(1479.8)	446.8(1691.2)		
	3.500(88.9)	1582(109.1)	1.0413(3.9416)	208.3(788.3)	260.3(985.4)	312.4(1182.5)	364.4(1379.5)	416.5(1576.6)		
	3.375(85.7)	1702(117.3)	0.9682(3.665)	193.6(733)	242.1(916.3)	290.5(1099.5)	338.9(1282.8)	387.3(1466)		
	3.250(82.6)	1835(126.5)	0.8978(3.3986)	179.6(679.7)	224.5(849.6)	269.3(1019.6)	314.2(1189.5)	359.1(1359.4)		
	3.125(79.4)	1985(136.9)	0.8301(3.1422)	166(628.4)	207.5(785.5)	249(942.7)	290.5(1099.8)	332(1256.9)		
3.000(76.2)	2154(148.5)	0.765(2.8958)	153(579.2)	191.3(724)	229.5(868.8)	267.8(1013.5)	306(1158.3)			
HP (Kilowatts) required @ RPM**				214(160)	267(199)	321(239)	374(279)	427(318)		
Piston Only →	4.500(114.3)	957(66)	1.7213(6.5156)	344.3(1303.1)	430.3(1628.9)	516.4(1954.7)	602.4(2280.5)	688.5(2606.3)	Flows: 153 – 688.5 gpm (579.2 – 2606.3 lpm) psi: 957 – 2154 (bar: 66 – 148.5) Stroke Length: 5.00 in. (127.00 mm) Weight: 5,200 lbs. (2358.68 kg)	Max. HP 427 (318 kW)
Piston Only →	4.250(108)	1073(74)	1.5353(5.8118)	307.1(1162.4)	383.8(1452.9)	460.6(1743.5)	537.4(2034.1)	614.1(2324.7)		
	4.000(101.6)	1212(83.6)	1.36(5.1482)	272(1029.6)	340(1287)	408(1544.4)	476(1801.9)	544(2059.3)		
	3.875(98.4)	1291(89)	1.2763(4.8314)	255.3(966.3)	319.1(1207.9)	382.9(1449.4)	446.7(1691)	510.5(1932.6)		
	3.750(95.3)	1378(95)	1.1953(4.5247)	239.1(904.9)	298.8(1131.2)	358.6(1357.4)	418.4(1583.7)	478.1(1809.9)		
	3.625(92.1)	1475(101.7)	1.117(4.2281)	223.4(845.6)	279.2(1057)	335.1(1268.4)	390.9(1479.8)	446.8(1691.2)		
	3.500(88.9)	1582(109.1)	1.0413(3.9416)	208.3(788.3)	260.3(985.4)	312.4(1182.5)	364.4(1379.5)	416.5(1576.6)		
	3.375(85.7)	1702(117.3)	0.9682(3.665)	193.6(733)	242.1(916.3)	290.5(1099.5)	338.9(1282.8)	387.3(1466)		
	3.250(82.6)	1835(126.5)	0.8978(3.3986)	179.6(679.7)	224.5(849.6)	269.3(1019.6)	314.2(1189.5)	359.1(1359.4)		
	3.125(79.4)	1985(136.9)	0.8301(3.1422)	166(628.4)	207.5(785.5)	249(942.7)	290.5(1099.8)	332(1256.9)		
	3.000(76.2)	2154(148.5)	0.765(2.8958)	153(579.2)	191.3(724)	229.5(868.8)	267.8(1013.5)	306(1158.3)		
HP (Kilowatts) required @ RPM**				214(160)	267(199)	321(239)	374(279)	427(318)		

*Displacement based on 100% volumetric efficiency **Power based on 90% mechanical efficiency

Accessories

Regulators

- Handle capacities from 5 – 210 gpm (19 – 795 lpm)
- Pressures from 50 – 5,500 psi (3 – 379 bar)
- Ductile iron body



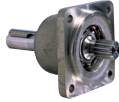
Bypass Relief Valve

- Flows from 5 – 210 gpm (19 – 795 lpm)
- Pressures 50 – 5,500 psi (3 – 379 bar)
- Aluminum bronze body with 316 stainless steel internal components



Planetary Shaft Adapter

- SAE adapter to provide shaft input for planetary gear boxes for inline motor drives



Force Feed Packing Lubricator

- Feeds for liquids requiring additional lubrication, such as; liquid propane, methanol, dry liquids or liquids with dried pumpage needing dissolved or flushed



Pulsation Equipment

- Suction and discharge
- Available up to 1,200 cu. in. (19,665 cu. cm)
- Flanged or threaded
- Replacement cartridges available
- Nitrile, EPDM, or TEF encapsulated
- Carbon steel, plastic coated, and 316 stainless steel



Pentair Myers Aplex Series Tools

- Patented valve puller
- Gland wrench
- Cage wrench



Pulsation Equipment

- Capacities from 10 – 20 gpm (38 – 78 lpm)
- Pressures to 1,500 psi (103 bar)
- Carbon steel body with butyl rubber, SS and acetal internal components



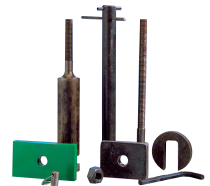
Planetary Gear

- Various ratios and HP ratings for Aplex pumps to fit your application



Pentair Myers Valve Pullers, Cylinder Puller

- Tools to assist in removal of valves or cylinders
- Packing removal tool



Pentair's Aurora® brand end suction pumps, including the 3550 Series ANSI pumps, make excellent charge pumps to insure proper suction condition requirements are met for best performance and longest operating life of the Pentair Myers and Pentair Myers Aplex reciprocating pumps.

Pentair Fairbanks® Nijhuis 7600 Series centrifugal multistage pumps offer an alternate approach to attaining pressure to 2250 psi.



1101 Myers Parkway
Ashland, OH 44805
USA
Ph: 888.416.9513

490 Pinebush Road
Unit 4
Cambridge, Ontario N1T 0A5
Canada
Ph: 800.387.4386
Orders Fax: 888.606.5484

pentair.com